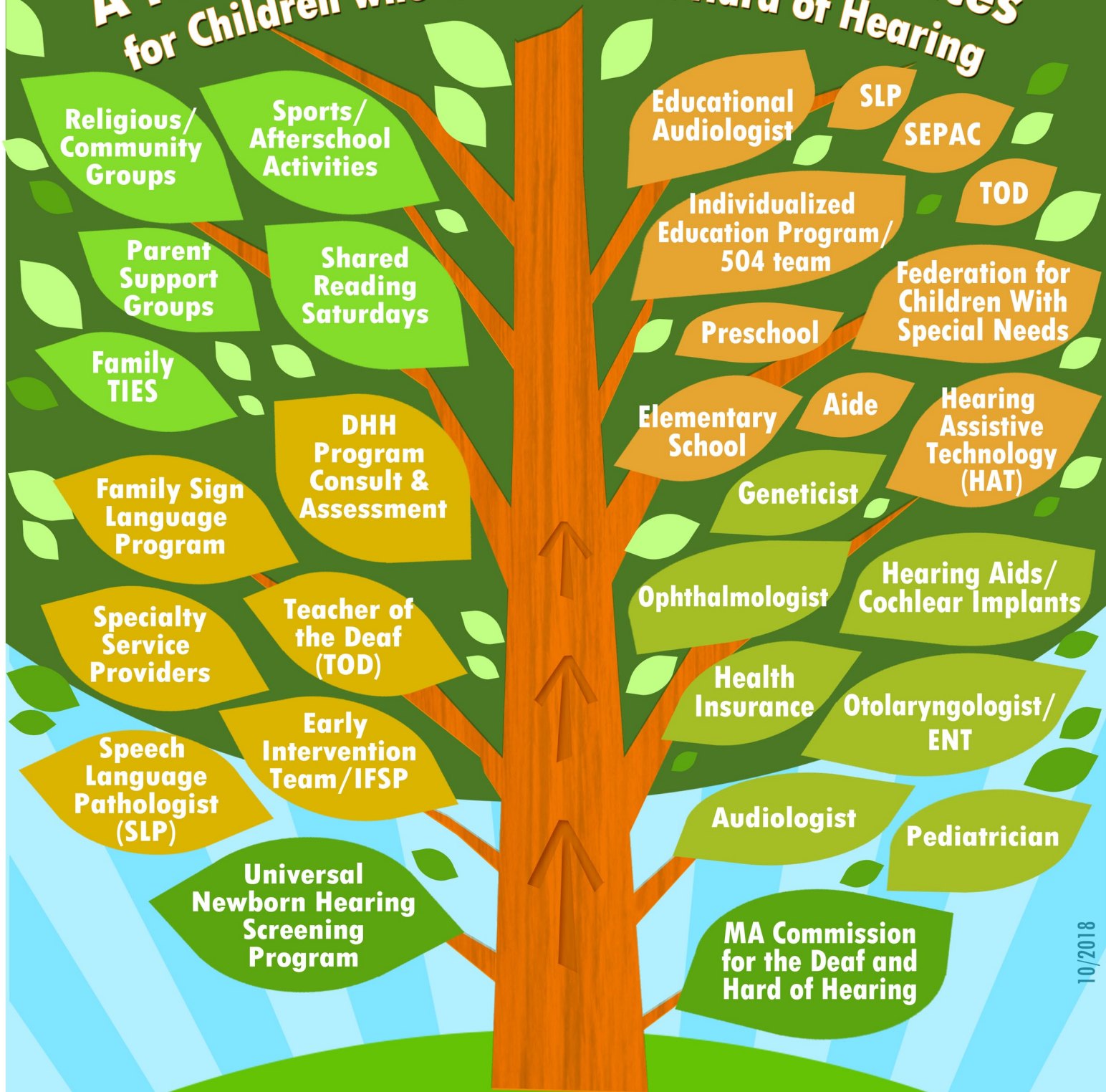


FROM THE ROOTS UP

A Family's Journey Through Services for Children who are Deaf and Hard of Hearing



10/2018

For links and information, please visit the
Universal Newborn Hearing Screening Program
 at mass.gov/universal-newborn-hearing-screening-program
 or contact us at 800-882-1435 or newborn.hearing@state.ma.us

RESOURCES FOR YOUR FAMILY'S JOURNEY

Massachusetts Commission for the Deaf and Hard of Hearing (MCDHH)
 Call 800-882-1155 and ask for the Children's Specialist in your area.

Early Intervention
 Call 800-905-TIES (8437) and ask for the Early Intervention program in your area.

Massachusetts Family TIES Parent-to-Parent Program
 Call 800-905-TIES(8437) to set up a telephone call with another family who has a child who is deaf or hard of hearing.



Services for Children who are Deaf and Hard of Hearing

Birth to three

Early Intervention (EI) Team/IFSP

Every child who is deaf or hard of hearing is eligible to receive early intervention services. An EI Program provides services to children, birth to three, and their families including those who are deaf or hard of hearing. Team members work together to develop an Individualized Family Service Plan (IFSP), a written plan that maps out the EI services your child will receive, as well as how and when these services will be administered.

Speech Language Pathologist (SLP)

A Speech/Language Pathologist is trained to evaluate and promote speech and language development. Some have specialized training and experience in working with children who are deaf or hard of hearing.

Specialty Service Providers

Once enrolled in EI, services are available from Specialty Service Providers who have special skills and knowledge around hearing loss and are trained to work with families of children who are deaf or hard of hearing. Services may include TOD, SLP, Parent Infant Programs, playgroups featuring interaction with deaf and hard of hearing peers, and parent groups. Families can request services from more than one Specialty Service Provider.

Teacher of the Deaf (TOD)

A Teacher of the Deaf is trained to teach children who are deaf or hard of hearing, specializing in one or more of a variety of approaches.

Family Sign Language Program

The goal of the Family Sign Language Program is to introduce family members to Sign Language, enabling them to communicate with their child at the earliest age possible.

DHH Program Consult & Assessment

Comprehensive, expert evaluations are valuable to develop individual plans and monitor progress over time.

Health Services

Pediatrician

Pediatricians are doctors who manage the health of a child, including physical, behavioral, and mental health issues. They are trained to diagnose and treat childhood illnesses, from minor health problems to serious diseases.

Otolaryngologist/ ENT

Otolaryngologists are doctors trained in the medical and surgical management and treatment of patients with diseases and disorders of the ear, nose, throat (ENT), and related structures of the head and neck. Pediatric specialists are available.

Audiologist

A health care professional trained to diagnose hearing loss, evaluate hearing levels and abilities, recommend hearing aids and/or other listening devices as needed, and fit a person with a sensory aid. Pediatric specialists are available.

Hearing Aids/ Cochlear Implants (CI)

A hearing aid is a device used to amplify sound. A CI is an implantable electronic device that provides the sense of sound by stimulating the auditory nerve directly. Massachusetts has an insurance mandate for hearing aids for children under the age of 21. Contact your insurance provider for more information.

Ophthalmologist

An ophthalmologist is an eye specialist. Hearing and vision loss both occur in certain syndromes. A referral to the eye doctor is common. Pediatric specialists are available.

Health Insurance

Health insurance is a type of insurance coverage that pays for medical and surgical expenses.

Geneticist

In some cases, hearing loss can be inherited. A geneticist specializes in the diagnosis and management of hereditary disorders.

Pre-school and beyond

Preschool

An educational establishment or learning space offering early childhood education to children typically ages 3 - 5. Specialized programs for DHH children exist.

Elementary School

An elementary (or primary school) is a school in which children receive elementary or primary education from the age of about five to twelve, coming after preschool and before secondary school.

Aide

A person whose job is to assist someone (i.e. teacher's aide). Certified educational interpreters are available.

Teacher of the Deaf (TOD)

A Teacher of the Deaf is trained to teach children who are deaf or hard of hearing, specializing in one or more of a variety of approaches.

Hearing Assistive Technology (HAT)

Devices that can help in communicating with others. Also referred to as assistive listening devices. HATS can be used with or without hearing aids or cochlear implants to make it easier to hear.

Individualized Education Program (IEP)/504 Team

School staff and parents work with a town/city liaison to create, support and implement the student's Individualized Education Program (IEP). The team may include advocates, professionals serving the family, and members of the school's special education program.

Educational Audiologist

The Educational Audiologist will focus their practice on supporting students who are deaf or hard of hearing in an educational setting by evaluating the student's hearing, listening, and auditory processing deficits that can affect their academic success, communication abilities and psychosocial well-being.

SEPAC (Special Education Parent Advisory Council)

A parent organization which works with the school system. Its purpose is to advise, strengthen and encourage open communication between the school district and parents of special education students.

Speech Language Pathologist (SLP)

A professional trained to evaluate and promote speech and language development. Some have specialized training and experience in working with children who are deaf or hard of hearing.

Federation for Children with Special Needs

The Federation for Children with Special Needs provides information, support, and assistance to parents of children with disabilities, their professional partners, and their communities.

Community

Shared Reading Saturdays

This program is designed to teach parents and care givers how to read to their deaf and hard of hearing children, using American Sign Language (ASL). The tutors also provide strategies to share books most effectively.

Religious/Community Groups

Religious organizations and groups within the local community can be great sources of support.

Sports/Afterschool Activities

Many sports and club activities are available to extend learning beyond the classroom.

Parent Support Groups

Parent support organizations exist that connect parents with children who are deaf or hard of hearing.

Family TIES

An information, referral and support network run by and for families of children with special health needs and their providers.

Universal Newborn Hearing Screening Program (UNHSP)

The UNHSP helps families get the services they need. Services include family support, outreach and education, parent-to-parent support, information and referral, technical assistance, information and resource connection.

MA Commission for the Deaf and Hard of Hearing (MCDHH)

MCDHH is a central information, referral and direct service agency in the state for Deaf, oral deaf, late deafened, and hard of hearing individuals of all ages and their families and service providers. MCDHH provides services to parents and families statewide.