



Family Support: Making It Work In Utah!



- Develop a contact schedule to maximize parent responsiveness and minimize loss to follow-up
- Describe the various methods used to connect and support DHH families in Utah
- Identify ways to collaborate with different organizations supporting DHH families in the state



Utah EHDI team

Stephanie B. McVicar, AuD
EHDI Programs Director
smcvicar@utah.gov



Krysta Badger, BS
Data Coordinator
kbehring@utah.gov



Ashleigh Sorenson, BA
UPC* Parent Consultant
ashleighsorenson@utah.gov



Aubri Ogden, BS
UPC* Parent Consultant
aubrianneogden@utah.gov



*Utah Parent Center



Shannon Wnek, AuD
Audiology/Compliance Coordinator
swnek@utah.gov



Holley Ezzell, BA
Follow-up Coordinator
hezzell@utah.gov



Jenny Pedersen, AuD
CHAP Coordinator
jpetersen@utah.gov



Max Sidesinger, MPH
CMV Data Coordinator
Epidemiologist
msidesinger@utah.gov



Jacinda Merrill, MPH
CMV Epidemiologist
jamerrill@utah.gov

U.S. DEPARTMENT OF HEALTH AND HUMAN SERVICES
Health Resources and Services Administration

Maternal and Child Health Bureau
Division of Services for Children with Special Health Needs

- 4) All funded (100 percent) entities will develop partnerships supported by a memorandum of understanding with identified statewide, family-based organizations or programs that provide family support to families/parents/caregivers of newborns and infants who are deaf or hard of hearing by the end of the three (3) year project period.

Universal Newborn Hearing Screening and Intervention Program

Announcement Type: New and
Funding Opportunity Num

Catalog of Federal Domestic Assi

FUNDING OPPORTUNITY

Fiscal Year 2

Application Due Date:

Ensure SAM.gov and Grants.gov registrations a

- Develop and maintain active family engagement and leadership efforts for families of children identified through newborn hearing screening who are deaf or hard of hearing. Recipients will be responsible for programmatic and fiscal support of family leadership and family engagement and for partnering with a minimum of one family support organization that supports families with deaf or hard of hearing infants/children. Recipients will be required to involve family partners in the development, implementation, and evaluation of the EHDI programs. Families should be consistently provided with the opportunity to collaborate with various leaders and policy makers in addressing the challenges to and providing solutions for the EHDI system. Additionally, programs will be required to partner with family-based agencies and organizations. Recipients will also be required to partner with HRSA's Family Leadership in Language and Learning Center after it begins operations on April 1, 2017.

- A minimum of 25 percent of funding toward the support of family organizations, including deaf mentorship activities, which must be documented by a memorandum of understanding

Issuance Date: August 15, 2016





Bringing Hope
Opening Doors
Elevating Inclusion

[Home](#)

[About](#)

[Disabilities](#)

[Resources](#)

[Events](#)

[Español](#)

[Give Now](#)



[Search](#)

Bringing Hope Opening Doors Elevating Inclusion

The mission of the Utah Parent Center (UPC or Center) is to help parents help their children, youth and young adults with all disabilities to live included, productive lives as members of the community.

[Learn More](#)



Bringing Hope. Opening Doors. Elevating Inclusion.

POSITION ANNOUNCEMENT – TARGETED RECRUITMENT – NEW POSITION

Please note required qualifications.

TITLE:	Parent Consultant Serving Parents of children who have been newly diagnosed as deaf or hard of hearing for the Early Hearing Detection & Intervention (EHDI) Program in the Utah Department of Health Bureau of Children with Special Healthcare Needs
ORGANIZATION:	Utah Parent Center , Parent Training and Information Center for Parents of Children and Youth with Disabilities
LOCATION:	Bureau of Children with Special Health Care Needs, 44 North Mario Capecchi Drive, Salt Lake City and Utah Parent Center - Salt Lake City Office <i>(See address for UPC below)</i>
JOB STATUS:	Permanent, Part-time (for determination of benefits only); 20 minimum hours per week with some additional flexible hours required
PAY RATE:	\$xx.xx/hour - includes benefit allotment
OPENING DATE:	Wednesday, June 21, 2017
CLOSING DATE:	Monday, July 3, 2017 or When Filled with a Qualified Candidate

GENERAL JOB SUMMARY:

As an employee of the Utah Parent Center (UPC or Center), works from the EHDI office at the Utah Bureau of Children with Special Health Care Needs and/or the Center's main office in Salt Lake City as a neutral party to assist parents of children who have been newly diagnosed as deaf or hard of hearing; works with parents and others individually and provides information and peer support to parents to help them work effectively with relevant providers and other agencies or organizations serving children who are deaf or hard of hearing to obtain services, resolve concerns, and identify programs and services to meet the needs of their children and/or family; helps parents gain the necessary skills to build effective partnerships with early intervention and professionals; provides training and materials for parents and professionals; provides information and referral to various agencies and service providers; Serves as a parent representative on system-level committees and any other duties as assigned; receives ongoing training, including UPC staff meetings and professional trainings and conferences. In addition, the Parent Consultant may attend IFSP meetings to support the parent, in-person or via electronic means as needed. All contacts and interactions must be conducted in a professional manner. Confidentiality is to be strictly maintained related to all activities and services in alignment with the Family Educational Rights and Privacy Act (FERPA) and HIPAA as required by UPC and EHDI Policies and Procedures.

GENERAL JOB RELATIONSHIPS:

- Responsible directly to the UPC Associate Director and/or Project Coordinators, in collaboration with EHDI Director and staff.
- Works cooperatively with all UPC and EHDI staff members, volunteers, and Board members.
- Works collaboratively with parents and professionals from various agencies and in the community.

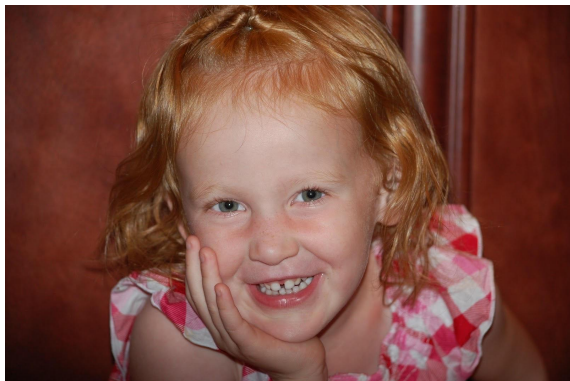


be
rs
sion

ter) is to help
with all disabilities
the community.

The Story of Us





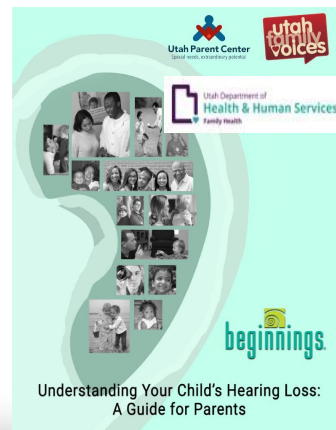
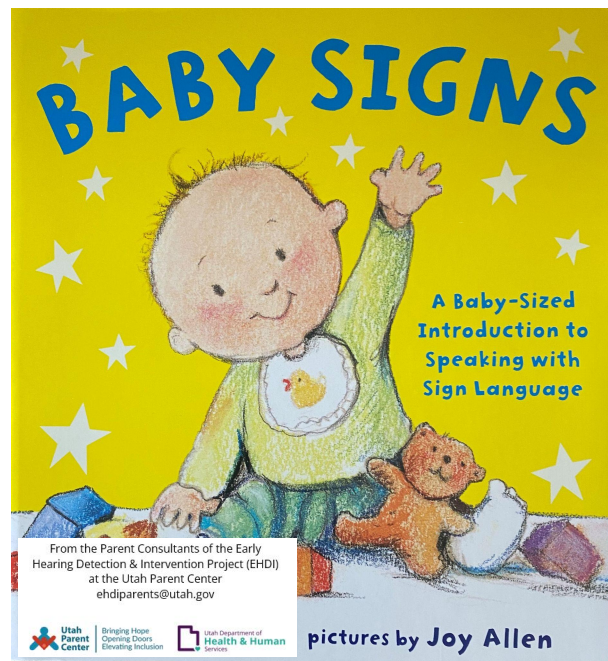


Our Role as EHDI Parent Consultants...

- Parent Champions for unbiased language modality
- Family Cheerleaders
- Connections Facilitators
- Encouragers that want to empower families



Resources Given Out at Diagnosis



Parent to Parent Support
Get connected to Deaf/Hard of Hearing (D/HH):

- Family events
- Services & Professionals
- News, Webinars and Resources

Ashleigh Sorenson
385-275-4916
ashleigh@utahparentcenter.org

Aubri Ogden
385-419-2156
aubri@utahparentcenter.org

Utah Parent Center
Bringing Hope
Opening Doors
Elevating Inclusion

Utah Department of Health & Human Services

@UtahEHDI

Utah Early Hearing Detection & Intervention



Reaching Out to Families



- We personally call families after a child is diagnosed and then follow up again on the child's birthday.
- Enrollment in our program= two-way communication where they agree to be added to our email list.



Initial Contact

- First contact 6 weeks after referral from Audiologist.
- Our attempts are a phone call, a text, and a welcome email (if provided).
- If we don't make contact with the family we set a recommended action 6 weeks later to contact them again.



Birthday/Follow-Up



Enrolled

- Call & Text around the child's next birthday to check in.

Unenrolled

- Call & Text around the child's next birthday.
- If no answer on the first attempt we then try again 6 weeks later.

CHAP/10+

- **CHAP= Children's Hearing Aid Program**
- **Initial Contact: single time attempt via call, text, and email.**
- **Follow-up: 6 months after initial contact.**



Social Media

Find us on Facebook & Instagram

@utahEHDI



WebinEARs



<https://www.youtube.com/@UtahParentCenter>

- Held every other month (except summer months)
- Guest Speakers
- Past Topics
 - Listening Fatigue
 - Processing Emotions
 - ASL Rhyming
 - Literacy
 - Power of Sibling(s) in Natural Language Development
- Share on YouTube and Social Media



Newsletter

- Email newsletter sent out every other month
- Available in English & Spanish
- Spotlight a Utah family
- Helpful tips and resources
- A book in ASL & LSL



ASDC Membership

We are offering FREE memberships for our families to the ASDC (American Society of Deaf Children) for a year. The code to sign up for one free year is UTEHDI.

[TO SIGN UP CLICK HERE](#)

Additional Helpful Resources For Your Family

Here are some great additional family resources to take a look at for information and support!

[CLICK HERE For Additional Resources](#)



EHDI Parent Newsletter

For Families of Deaf / Hard of Hearing Children

October 2024

Family Spotlight



Meet the Lauritzen Family From Pleasant View, Utah

[CLICK HERE](#)

EHDI Lunchtime Webinars



Did you know that Utah EHDI hosts 30 minute online lunchtime Webinars every other month?

Some Recent Topics:

- Story Sharing With Deaf and Hard of Hearing Children
- The Power of Siblings in Language Development
- Building Bridges Through Postpartum Depression
- Your Child's Social Emotional Development
- Processing Emotions of Being a DHH Family

Utah EHDI Parent Consultants



Have some questions about raising a Deaf or Hard of Hearing Child?

Want to talk to another parent that has been there before?

Aubri Ogden and Ashleigh Sorenson are Utah Parent Consultants that would love to assist you by offering direct support from a parent to parent perspective in your journey raising a child who is Deaf/Hard of Hearing.

Aubri Ogden
385-410-2150
aubri@utahparentcenter.org

Ashleigh Sorenson
385-770-4410
ashleigh@utahparentcenter.org

[Visit our Facebook](#)

[Visit our Instagram](#)



Newsletter

- Email newsletter sent out every other month
- Available in English & Spanish
- Spotlight a Utah family
- Helpful tips and resources
- A book in ASL & LSL



ASDC Membership

We are offering FREE memberships for our families to the ASDC (American Society of Deaf Children) for a year. The code to sign up for one free year is UTEHDI.

[TO SIGN UP CLICK HERE](#)

Additional Helpful Resources For Your Family

Here are some great additional family resources to take a look at for information and support!

[CLICK HERE For Additional Resources](#)



Interested In Adding More Deaf/ Hard of Hearing Family Activities In Your Local Area?



Scan or Click On This Code For More
Information:



Yes, CHAP accepted

Children's Hearing Aid Program (CHAP)

All children with hearing loss should have access to resources necessary to reach their maximum potential.

CHAP will cover:

- ★ Purchase and fitting of one hearing aid per ear, including bone-conduction devices
- ★ Cost of earmolds for three years
- ★ A portion of cost for the first three years of hearing aid visits with your pediatric audiologist



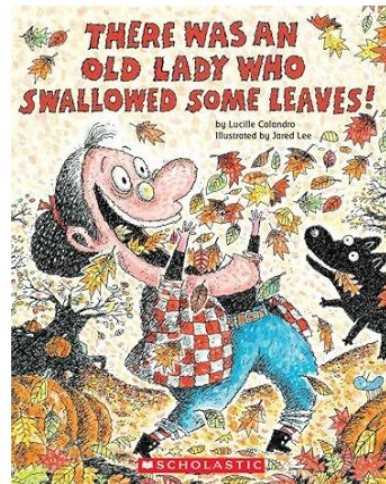
- 801-275-6600
- familywealth@utah.gov/CHAP



Utah Department of
Health & Human Services
familywealth

October Book Spotlight in ASL & LSL: There Was An Old Lady Who Swallowed Some Leaves

Reading to your child is one of the best ways to help grow their language. In this issue we are featuring the book "There Was An Old Lady Who Swallowed Some Leaves" by Lucille Colandro. "There Was An Old Lady Who Swallowed Some Leaves" is a favorite that provides rich language learning in both American Sign Language (ASL) and Listening and Spoken Language (LSL).



American Sign Language
(ASL) Resource
by Indiana School For the
Deaf Media Center

[FOR ASL CLICK HERE](#)

Listening and Spoken
Language (LSL) Resource
by Hearing First

[FOR LSL CLICK HERE](#)

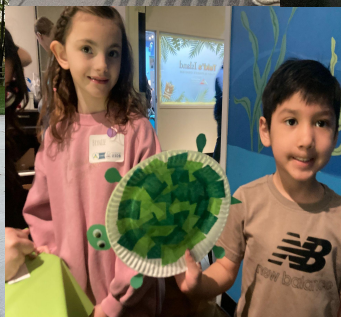


Parent Volunteer Network

- Composed of Parents and D/HH Professionals
- Representation is statewide
- Parent to Parent Resource
- Plan/Host Activities



Events



Present to Local Entities about Services We Offer:

- Newborn Hearing Screening Committee/ Pediatric Audiology Working Group (PAWG)
- Local Audiologists
- Sound Beginnings & Utah School for the Deaf and Blind (USDB)
- Local Universities for Audiology and TOD Students
- PIP (Parent Infant Program) Activities
- Utah Parent Center (UPC) Staff
- Anywhere we are requested



EHDI

Early Hearing Detection & Intervention

Parent Consultants



Ashleigh Sorenson

385-275-4916

ashleigh@utahparentcenter.org

Aubri Ogden

385-419-2156

aubri@utahparentcenter.org

Parent to Parent Support



www.facebook.com/utahEHDI



www.instagram.com/utahEHDI



Utah Department of
Health & Human
Services



UTAH PARENT CENTER

EHDI

Utah Early Hearing
Detection & Intervention

Questions?

ehdiparents @utah.gov