



## THE HSA WAY

- Screening 365 days a year
- Top scores on EHDl report cards
- Audiology supervision and oversight
- 200+ years combined aud experience
- Network of hospitals nationwide
- Traveling screener group
- Low refer and LTF rates
- Providing equipment, calibration, and supplies

### **WHAT we do:**

We are a newborn hearing screening company.

### **HOW we do it:**

Hospitals contract with us to provide their newborn hearing screening program.

### **WHY we do it:**

We believe every baby is entitled to having their basic needs met.



#### **Wendy Jumonville**

Director of Screening Services  
[weju@teamhsa.com](mailto:weju@teamhsa.com)  
225-963-0125

#### **Kenzi Pumford**

Training and Development Manager  
[kndo@teamhsa.com](mailto:kndo@teamhsa.com)  
224-223-4931

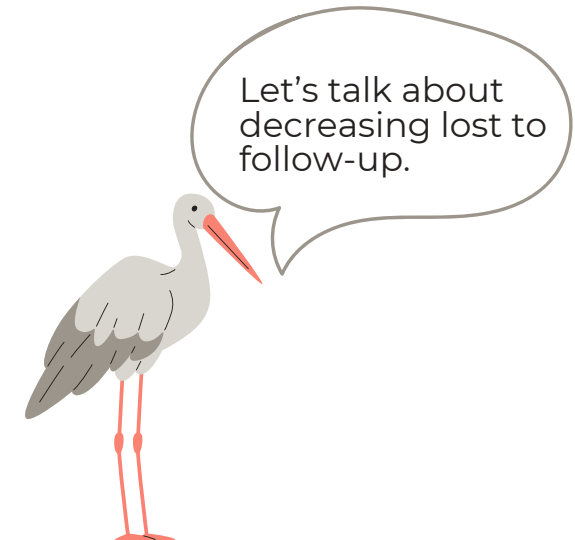


HEARING SCREENING ASSOCIATES

## THE CONSISTENT MESSAGE PROJECT:

### **DID NOT PASS**

in newborn hearing screening

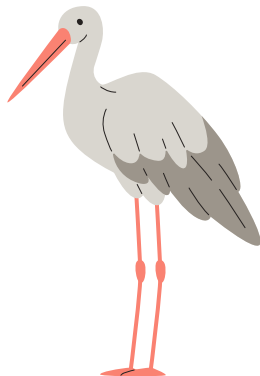




## DID YOU KNOW?

The **#1 practice** in reducing LTF is a **consistent message** given to the caregivers of a baby who does not pass the newborn hearing screen.

NCHAM



Trained Screeners

+

Consistent Message



Caregivers empowered to choose the best path for their baby

CONSISTENT  
MESSAGE

EMPOWERED  
CAREGIVERS

NEXT STEPS



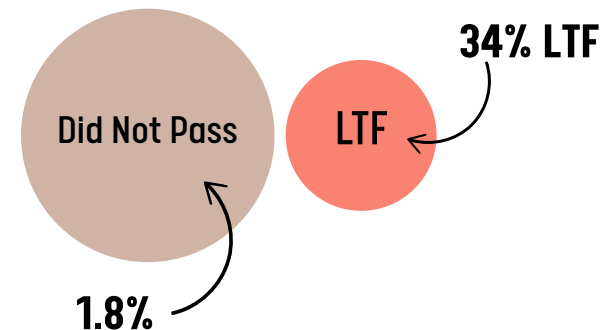
DID NOT PASS

BEST PATH FOR  
BABY

REDUCED LTF

## 2022 National CDC EHCI Report

- 3,547,774 screened
- 62,508 referred
- 22,146 LTF



## 2022 HSA Report

- 107,209 screened
- 2,579 referred
- 429 LTF

