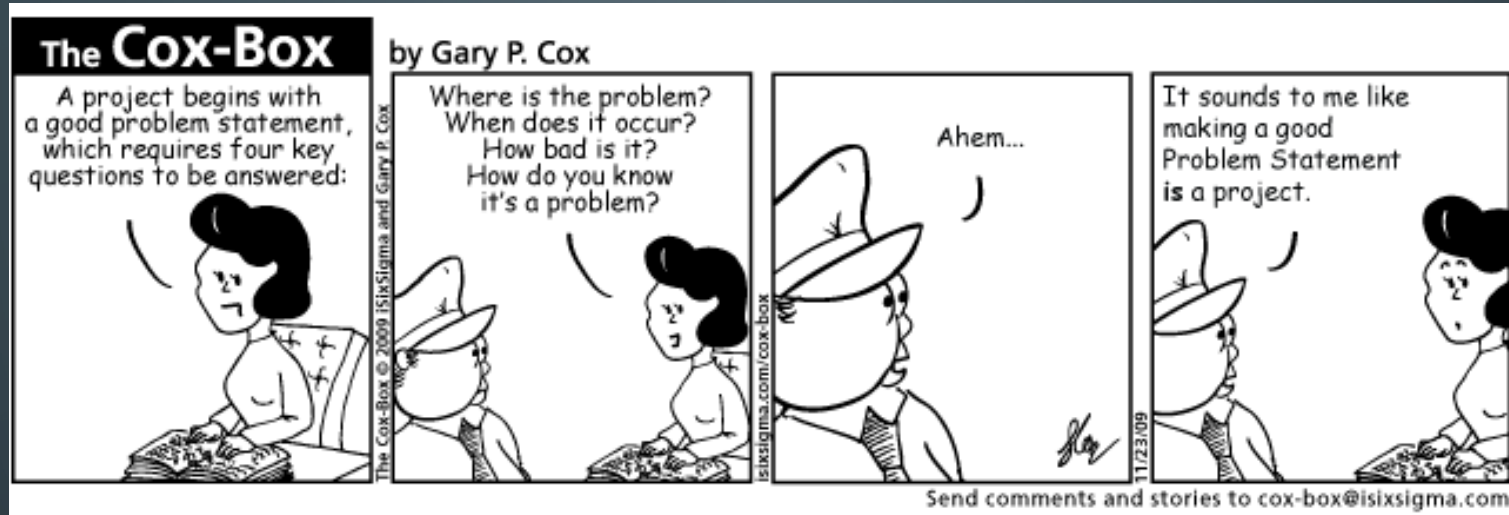


The slide features a dark blue background with decorative white circuit-like lines in the corners. The main title is centered and reads:

The Deaf Mentor Program: Benefits to Families and Professionals

Dr. Beth Hamilton
Deaf and Hard of Hearing Educational Consultation
BMHamilton5@gmail.com
Early Hearing Detection Intervention Conference
March 19th 2018

Purpose



- ❖ Few research about Deaf Mentors
- ❖ Objective
- ❖ Grounded Theory
- ❖ Two points of view
 - ❖ Families
 - ❖ Deaf Mentors
- ❖ Benefited & Oppressed

Research Design

Procedure

- ❖ IRB approval was obtained from the university.
- ❖ Consent
- ❖ All data was video recorded
- ❖ Interview

Validity of the Study

- ❖ The validity of the data
- ❖ Accuracy of the translation
- ❖ Recheck
- ❖ Triangulation
- ❖ SKI-HI curriculum

Treatment of the Data

- ❖ Code process
- ❖ Themes and categories
- ❖ Coding method
- ❖ Axial coding
- ❖ A core category identified
- ❖ Complete data on both hearing parents and Deaf Mentors
- ❖ Develop a theory

Case study



Phenomenal
Logical
approach



Narrative
approach



Grounded
approach

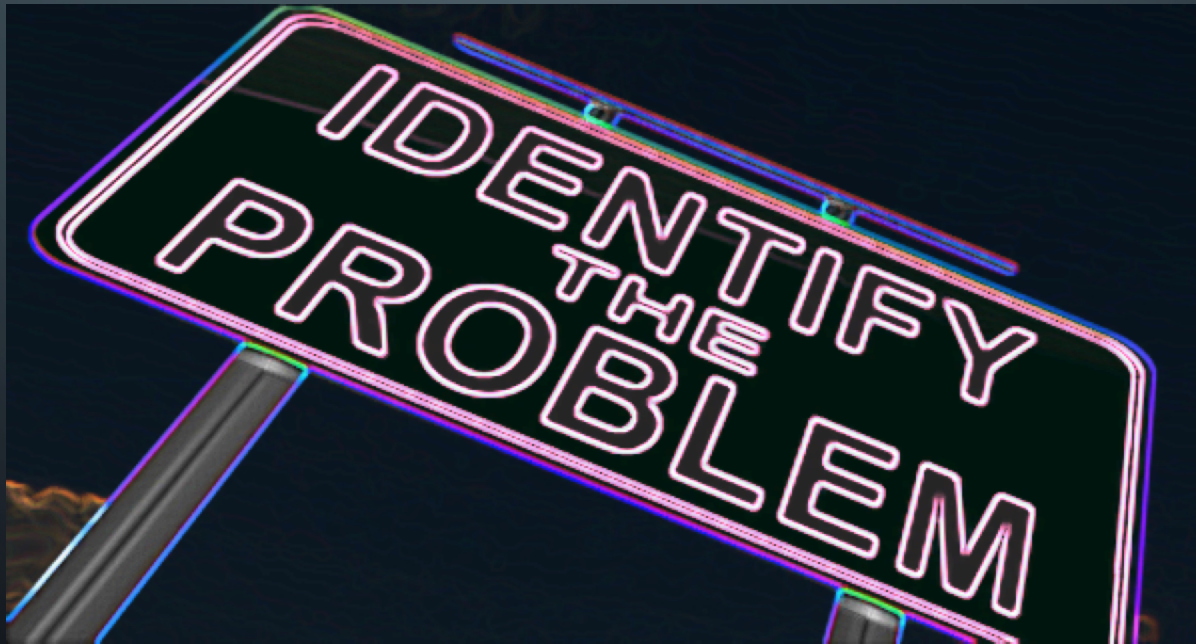


Qualitative
Approach

Background of the Problem

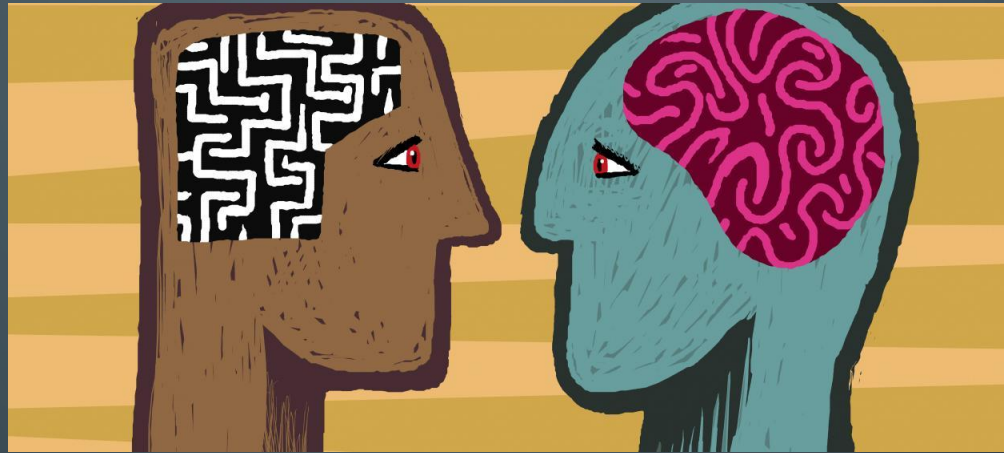
Issues:

- ❖ About three in 1000 infants are born Deaf
- ❖ About additional 6 are identified Deaf by time they are age 6
- ❖ About 95% of these Deaf children are born into hearing families
- ❖ Challenge for families
- ❖ Deaf professionals are not usually involved



Theoretical Framework

Critical Race Theory (CRT)

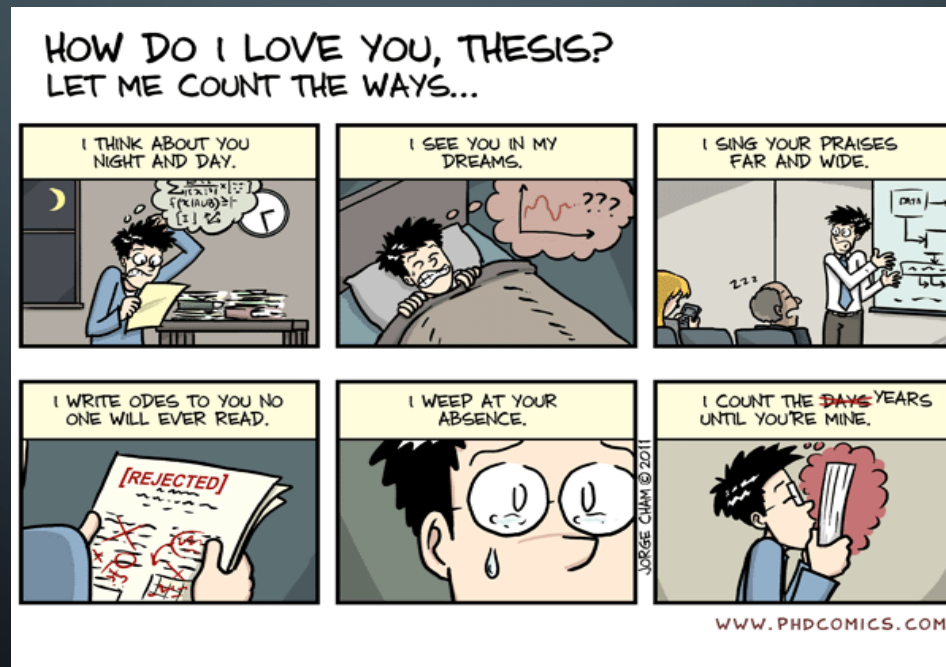


Community Cultural Capital (CCC)



Research Questions

- ❖ Research Question #1: What do hearing families with a Deaf child report as their experiences with the Deaf Mentor Program?
- ❖ Research Question #2: How do experience Deaf Mentors trainers view their roles and responsibilities when interacting with hearing families and their Deaf child?



Focus on Early Linguistic Access

- ❖ Identify early as possible
- ❖ Perceptual Window
- ❖ Eye-Gaze
- ❖ Deaf Gain/Epistemology



**Early access to language:
Creating an optimal
foundation for deaf
children's cognitive
development**

Two Epistemological Perspectives

Medical Perspective	Socio-Cultural Perspective
Communication Options	Communication Opportunities
Hearing Loss	Hearing level, status, abilities, or Differences
Intervention	Involvement or identification
Failed hearing test	Refer with explanation
Diagnosis	Identification
Fix the ear	Modify or cope
Deafness	Deaf, deaf people, being deaf
Hearing impaired	Deaf or Hard of Hearing

The Medical Perspective's Impact

- ❖ The problems are at university, state and federal level
- ❖ Deafness is a disease to be cured
- ❖ Technology



The Socio-Cultural Perspective's Impact

- ❖ Maximize development
- ❖ Diversity lens
- ❖ Equivalent
- ❖ No risks
- ❖ Increase knowledge of Deaf being



Early Intervention and the Deaf Mentor Program



- ❖ Not 100% effective
- ❖ Two-years lag
- ❖ Referrals
- ❖ Availability



- ❖ Build community capital
- ❖ Reduce the risk of isolation
- ❖ High expectations of their Deaf child
- ❖ Cultural awareness
- ❖ Model for the families
- ❖ First hand experience

Finding



Families

Open Codes

Axial Codes

Core Category

Different not Disabled

Learning Indigenous Practices

Resources for Child Success

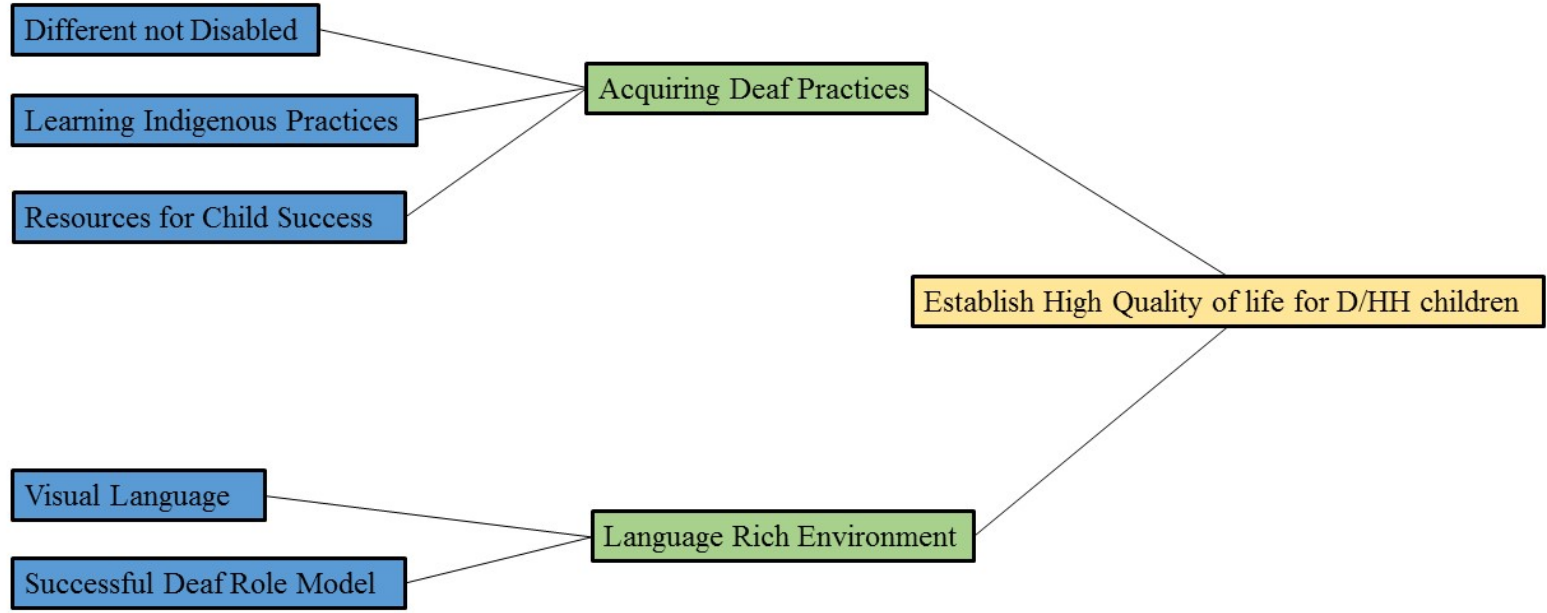
Acquiring Deaf Practices

Visual Language

Successful Deaf Role Model

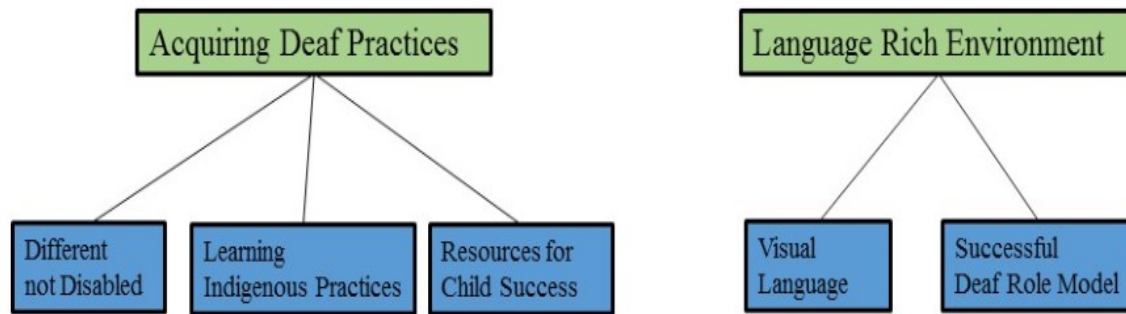
Language Rich Environment

Establish High Quality of life for D/HH children



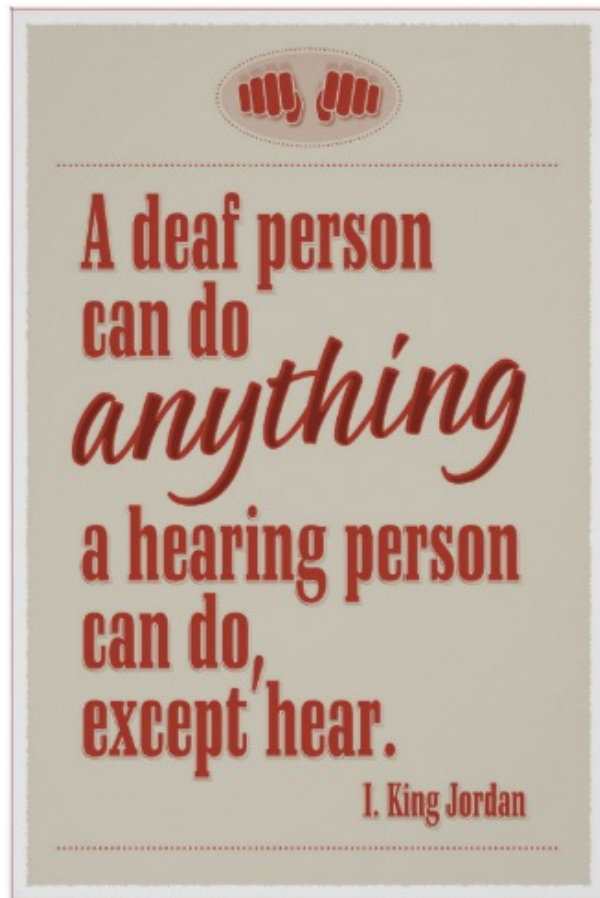
Axial Codes

Axial Codes



- ❖ Deaf perspective
- ❖ Deaf epistemology
- ❖ Hearing professional VS Deaf Professional
- ❖ Before Deaf Mentor
- ❖ Vital Support
- ❖ Complete unit
- ❖ Academic and everyday life
- ❖ Immediately
- ❖ Opportunity

Establishing a High Quality of Life for Deaf/HH Children



- ❖ Inclusive services
- ❖ Move forward
- ❖ Positive outcome
- ❖ Connected to the Deaf community
- ❖ Navigate

Deaf Mentors

Open Codes

Axial Codes

Core Category

Knowledge Transfer

Support Systems

Alternative Pathways to Successful Development

Wholistic Approach

Desperation

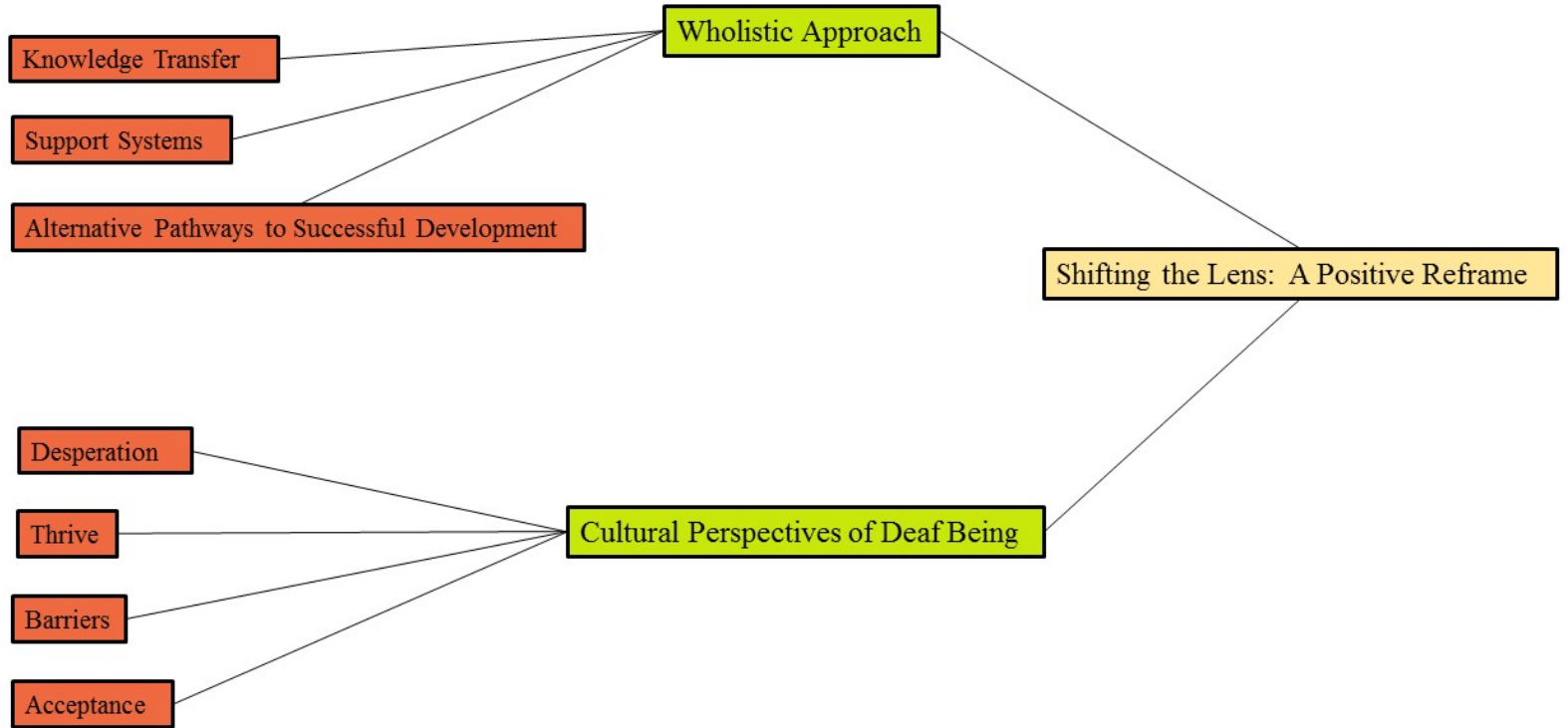
Thrive

Barriers

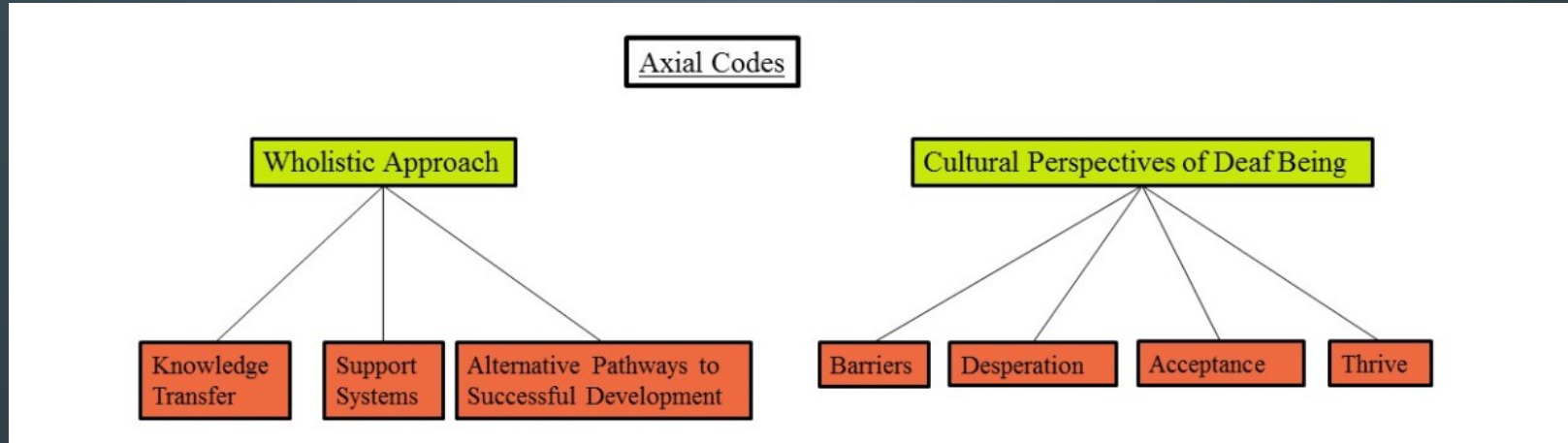
Acceptance

Cultural Perspectives of Deaf Being

Shifting the Lens: A Positive Reframe



Axial Codes

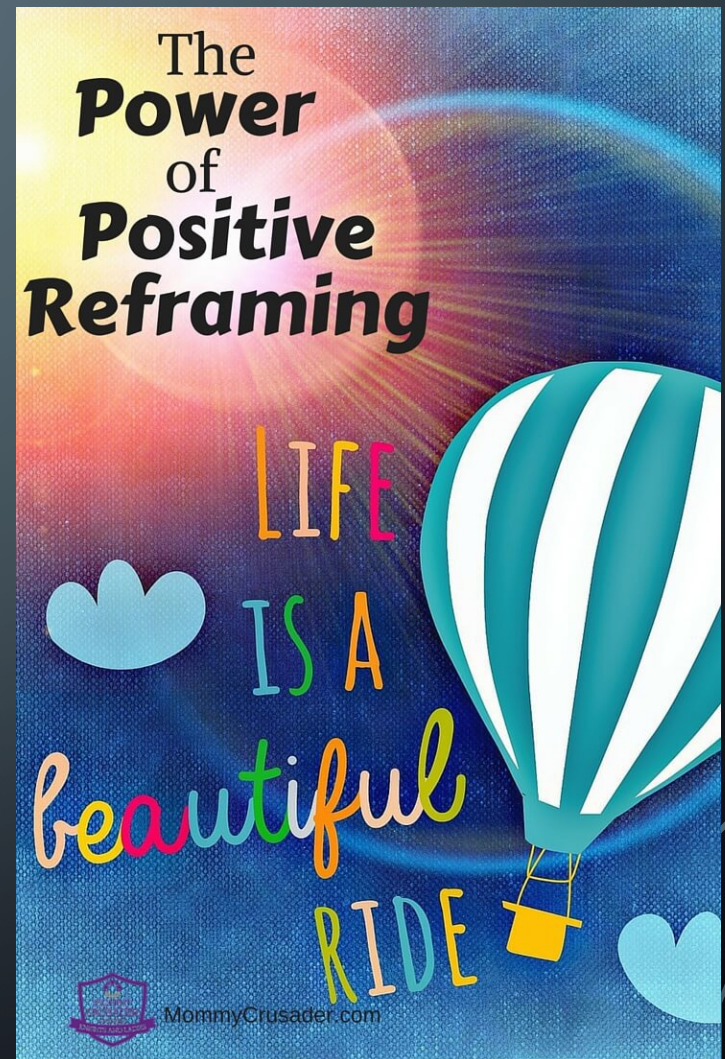


- ❖ Natural approach
- ❖ Offer
- ❖ Accepted Deaf Mentor's advice
- ❖ Importance
- ❖ Advocate

- ❖ Medical Perspective to a Socio-Cultural Perspective
- ❖ Transition is a breakthrough
- ❖ Empowered

Shifting the Lens: A Positive Reframe

- ❖ Deaf child's quality of life
- ❖ Insight
- ❖ More support
- ❖ Deaf identify
- ❖ Claim an identity leads to a confident child



Relationships between family and Deaf Mentor interviews

“Once you **understand** and **appreciate** other people’s cultural backgrounds, then you can also **connect** with them more.”

- ❖ CCC to families
- ❖ Bicultural and developed

Conclusion

Establishing a
High Quality
of Life for
Deaf and Hard
of Hearing
Children

Shifting the
Lens: A Positive
Reframe



Theoretical
framework

Using CCC to Enhance the
Visual Lives of Deaf Beings

- ❖ Benefit in ...
- ❖ Gain confidence and knowledge
- ❖ Deaf epistemology
- ❖ Cognitive ecology
- ❖ Shifting perspective



**KEEP
CALM
AND
ASK
QUESTIONS**

Image References

- ❖ <http://www.heightsit.com/wp-content/uploads/2014/01/copyright1.jpg>
- ❖ <https://www.gagcartoons.com/load-image.php?mode=thumbnail&idx=MTA4Nw==>
- ❖ <https://s-media-cache-ak0.pinimg.com/736x/8a/d5/fc/8ad5fc6cb0ef1f60d3c664ab406f0fb0--appreciation-quotes-internship.jpg>
- ❖ <http://unstuck.me/wp-content/uploads/2014/10/identify-the-problem.jpg>
- ❖ http://api.theweek.com/sites/default/files/styles/tw_image_9_4/public/42-21886655.jpg?itok=xHDI1szZ&resize=1260x560
- ❖ <https://quotefancy.com/quote/1213275/Michael-Gove-The-accumulation-of-cultural-capital-the-acquisition-of-knowledge-is-the-key>
- ❖ https://www.isixsigma.com/public/images_upload/CB-5404_112309-PSP_640.gif
- ❖ <https://abel.mcmaster.ca/images/cartoon.png>
- ❖ <http://i1.kym-cdn.com/photos/images/original/000/603/810/f57.jpg>
- ❖ <http://blogs.plos.org/absolutely-maybe/files/2016/03/Eureka.jpg>
- ❖ <http://1.bp.blogspot.com/--ro6K1shAro/VVE04kubJwI/AAAAAAAAAB5Y/nP1xG6KPOBQ/s1600/1A%2B-%2BLimitations%2Band%2BDelimitations.jpg>
- ❖ <http://www.resartis.org/gvcm/media/upload/image/wordcloud%20artist%20residencies%20definition.png>
- ❖ <https://ctc.edu uy/files/2017-02/91b7d2b935a40c8f3ca9c67f2949f5fc.jpg>
- ❖ <http://languagecreationlab.uconn.edu/wp-content/uploads/sites/644/2017/04/Screen-Shot-2017-04-11-at-12.52.00-PM.png>
- ❖ <http://www.imshealth.com/files/web/Segment%20Solutions/Medical%20Device%20&%20Diagnostics/medical-devices-diagnostics-tech-panel-1.jpg>
- ❖ http://3.bp.blogspot.com/-sGb-nyIak80/WDsCo_GqDPI/AAAAAAAAABhU/BIR7fbEYf3Ys_L_KczHO83UVoxRdLcJMACK4B/s1600/creatividad-1.jpg
- ❖ http://cache.johnchow.com/wp-content/uploads/2012/05/mktgautomation_obstacles.png
- ❖ <http://www.nancyrourke.com/paintings/deaf/dpndayseven.jpg>
- ❖ <https://weingartenlrc.files.wordpress.com/2016/12/intersectionality-bluelman.jpg?w=788>
- ❖ http://pollonqualitativerecherche.ca/wp-content/uploads/2012/07/Page_Research.jpg
- ❖ http://st2.depositphotos.com/1969477/10937/v/170/depositphotos_109377170-stock-illustration-gay-family-blue.jpg
- ❖ https://scontent.cdninstagram.com/t51.2885-15/s640x640/sh0.08/e35/17126482_1894885904130223_1168900286186520576_n.jpg
- ❖ <https://software-carpentry.org/files/2015/07/glossary-wordle.png>
- ❖ https://rlv.zcache.com/a_deaf_person_can_do_anything_poster-r5b91af4823254ceaa992312b3a0ef371_wvg_8byvr_540.jpg
- ❖ <https://i0.wp.com/www.mommycrusader.com/wp-content/uploads/2015/09/The-Power-of-Positive-Reframing.jpg?fit=735%2C1102>
- ❖ <http://www.csuchico.edu/bridgesnewsletter/story6/images/quote1.png>
- ❖ <http://cdn.quotegram.com/img/94/62/1835180503-quote-Arthur-Bloch-enough-research-will-tend-to-support-your-67071.png>
- ❖ <http://mysto.ro/wp-content/uploads/2015/12/Unlimited-Possibilities.png>
- ❖ <https://quotefancy.com/quote/872518/Neil-Armstrong-Research-is-creating-new-knowledge>
- ❖ <https://pokoli.github.io/tryton-erp-adapted-to-your-needs/img/questions.png>