

# Deaf Gain: Visual Strategies for Spoken and Sign Language Acquisition

Dr. Elaine Gale & Dr. Amber Martin

[egale@hunter.cuny.edu](mailto:egale@hunter.cuny.edu) | [am2631@hunter.cuny.edu](mailto:am2631@hunter.cuny.edu)



EHDI | Cincinnati, Ohio | March 6, 2023

# Outcomes

## Identify

**Identify at least three Deaf Gain contributions to society**

## Describe

**Describe why it is important to use visual strategies for spoken and sign language**

## List

**List at least three visual strategies Deaf adults use for effective communication**



# Outcomes

## Identify

**Identify at least  
three Deaf Gain  
contributions to  
society**



# Identify at least three Deaf Gain contributions to society

Which of the following is NOT an example of Deaf Gain?

- a) Captioning
- b) Hearing Loss
- c) Eye Contact
- d) Football Huddle

# Identify at least three Deaf Gain contributions to society

Which of the following is NOT an example of Deaf Gain?

- a) Captioning
- b) Hearing Loss**
- c) Eye Contact
- d) Football Huddle

**“realizing that deaf people have brought to the world unique ways of living and being as visual beings.”**

# Deaf Gain



<https://www.youtube.com/watch?v=FrLoCB5i5KY>



# Deaf Gain



<https://www.youtube.com/watch?v=FrLoCB5i5KY>



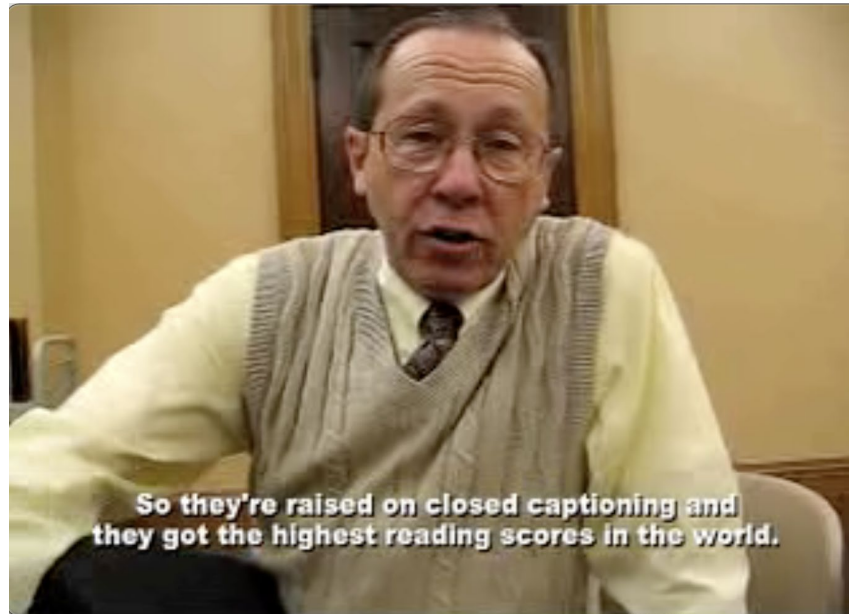
**HUNTER**  
The City University of New York





# Deaf Gain

## Closed Captioning





# Deaf Gain Football Huddle



<https://www.youtube.com/watch?v=15tbq12Fzvc>

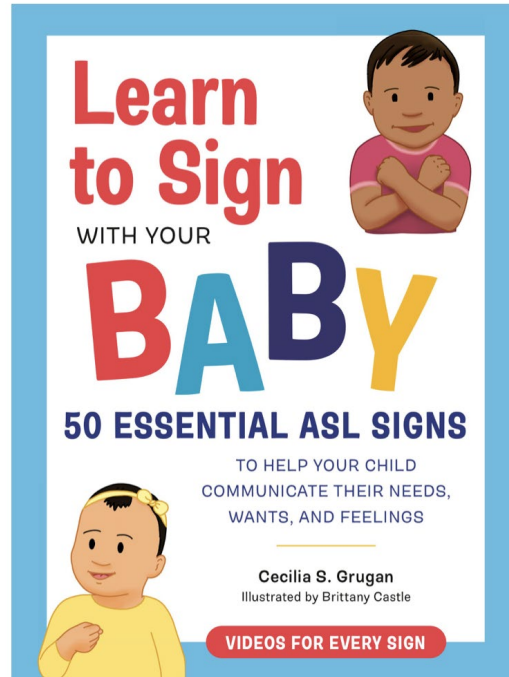


**HUNTER**  
The City University of New York



# Deaf Gain

## Signing with Babies



# Deaf Gain Deaf Parents

**Bilingual Bimodal  
Advantage**

**Vocabulary  
Advantage**

# Deaf Gain

## Deaf Role Models

**Strong sense of  
competence in their  
child's upbringing**

**Greater language  
gains**

# Deaf adult role models are everywhere! Connect with us!



**dliacconnect**  
DLIA Connect



**thatdeafamily**  
estefani | that deaf family



**blackdeafeducation**  
Black Deaf Education



**asdcdeafchildren**  
American Society for Deaf Children



**nationaldeafcenter**  
National Deaf Center



**deafeducation**  
Deaf Education Info



**deafwomenofcolor**  
Deaf Women of Color



**heritageasl**  
Kathleen L. Brockway



**asiansigners**  
Asian Signers



**blackdeafstudiescenter**  
Center for Black Deaf Studies



**atomichands**  
Atomic Hands



**whyisign**  
whyisign · Original audio



**deafinscrubs**  
Deaf In Scrubs



**councildemanos**

and many more...



# Outcomes



**Describe**

**Describe why it is  
important to use  
visual strategies  
for spoken and  
sign language**



# The case for using visual strategies in spoken and sign language learning

ALL language learning is multi-modal

Infants point and gesture before their first words

Infants' pointing fosters early language growth



# Meaningful interactions include gesture and affect

More redundancy in information across modalities boosts language

Adults' use of eye-gaze, pointing and gestures helps children's language growth

Deaf children need the same multi-modal language tools



# Outcomes



List

**List at least three  
visual strategies  
Deaf adults use  
for effective  
communication**

List at least three visual strategies Deaf adults use for effective communication



# 12 WAYS DEAF ADULTS VISUALLY INTERACT WITH YOUNG CHILDREN

---



# Deaf Parents/Teachers: Attention

Elicit attention  
with eye gaze





# Deaf Parents/Teachers: Parentese

**Exaggerate  
movements**





# Deaf Parents/Teachers: Joint Attention

**Provide  
time to  
explore**



# Deaf Parents/Teachers: Shared Reading

Adjusting sign  
placement to  
fit the story



List at least three visual strategies Deaf adults use for effective communication



# 12 WAYS DEAF ADULTS VISUALLY INTERACT WITH YOUNG CHILDREN

---



# References

- Bauman, H.-D. L., & Murray, J. J. (Eds.). (2014). *Deaf Gain: Raising the stakes for human diversity*. University of Minnesota Press.
- Booth, A., McGregor, K., Rohlfing, K. (2008). Socio-pragmatics and attention: Contributions to gesturally guided word learning in toddlers. *Language Learning and Development*, 4(3), 179-202.
- Davidson, K., Lillo-Martin, D., & Chen Pichler, D. (2014). Spoken English language development among native signing children with cochlear implants. *Journal of Deaf Studies and Deaf Education*, 19(2), 238–250.
- Gale, E., & Schick, B. (2009). Symbol-infused joint attention and language use in mothers with deaf and hearing toddlers. *American Annals of the Deaf*, 153(5), 484–503.
- Hintermair, M. (2000). Hearing impairment, social networks, and coping: The need for families with hearing-impaired children to relate to other parents and to hearing-impaired adults. *American Annals of the Deaf*, 145(1), 41–53.
- Hollich, G., Hirsh-Pasek, K., Golinkoff, R., Brand R., Brown, E., Chung, H. (2000). Breaking the language barrier: An emergentist coalition model for the origins of word learning. *Monographs of the Society for Research in Child Development*, 65(3), 1-123.
- Masataka, N. (1996). Perception of motherese in a signed language by 6-month-old deaf infants. *Developmental Psychology*, 32(5), 874.
- Moeller, M. P., Carr, G., Seaver, L., Stredler-Brown, A., & Holzinger, D. (2013). Best practices in family-centered early intervention for children who are deaf or hard of hearing: An international consensus statement. *Journal of Deaf Studies and Deaf Education*, 18(4), 429–445.
- Muse, C., Harrison, J., Yoshinaga-Itano, C., Grimes, A., Brookhouser, P. E., Epstein, S., Buchman, C., Mehl, A., Vohr, B., Moeller, M. P., Martin, P., Benedict, B., Scoggins, B., Crace, J., King, M., Sette, A., & Martin, B. (2013). Supplement to the JCIH 2007 position statement: Principles and guidelines for early intervention after confirmation that a child is deaf or hard of hearing. *Pediatrics*, 131(4), e1324–e1349.
- Schleper, D. R. (1996). Principles for reading to deaf children. Pre-College National Mission Programs, Gallaudet University.
- Watkins, S., Pittman, P., & Walden, B. (1998). The Deaf Mentor Experimental Project for young children who are deaf and their families. *American Annals of the Deaf*, 143(1), 29–34.
- Woodward, A., Guajardo, J. (2002). Infants' understanding of the point gesture as an object-directed action. *Cognitive Development*, 17(1), 1061-1084.
- Yoshinaga-Itano, C., Sedey, A. L., Wiggin, M., & Chung, W. (2017). Early hearing detection and vocabulary of children with hearing loss. *Pediatrics*, 140, Article e20162964.

# Deaf Gain: Visual Strategies for Spoken and Sign Language Acquisition

Dr. Elaine Gale & Dr. Amber Martin

[egale@hunter.cuny.edu](mailto:egale@hunter.cuny.edu) | [am2631@hunter.cuny.edu](mailto:am2631@hunter.cuny.edu)



EHDI | Cincinnati, Ohio | March 6, 2023