

Deaf and Hard of Hearing Engagement in EHDI and Early Intervention Systems

Sheri Farinha, CEO, Dr. Karen Hopkins, & Dr. Julie Rems-Smario

2024 EHDI Conference

Denver, Colorado
March 17-19, 2024

WHO ARE WE?

California: Julie Rems-Smario, Ed.D., California EHDI Co-Coordinator, Early Language and Education Programs Consultant

California: Sheri Farinha, M.Ed., Principal Investigator, California HRSA Grant, California EHDI Co-Coordinator & CEO, NorCal Services of the Deaf

Maine: Karen Hopkins, M.Ed, CAS, ABD, Principal Investigator, Maine HRSA Grant, Executive Director, Maine Educational Center for the Deaf

Objectives:

- Participants will be able to describe how Deaf leadership and embedding Deaf and hard of hearing adults into a statewide EHDI system benefits families of Deaf and hard of hearing children.
- Participants will be able to identify ways to embed Deaf and hard of hearing Adults into their state's EHDI and early intervention processes.
- Participants will identify simple system changes to ensure Deaf and hard of hearing children have the opportunity to meet Deaf and hard of hearing adults.



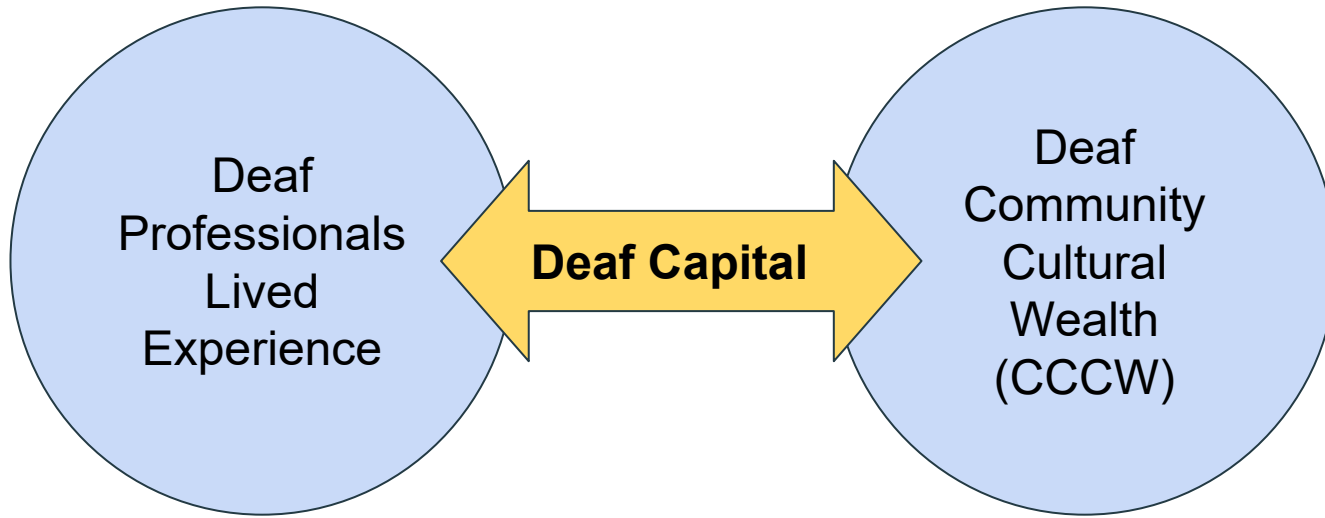
Two States have Deaf Leadership in EHDI

Why only two ?

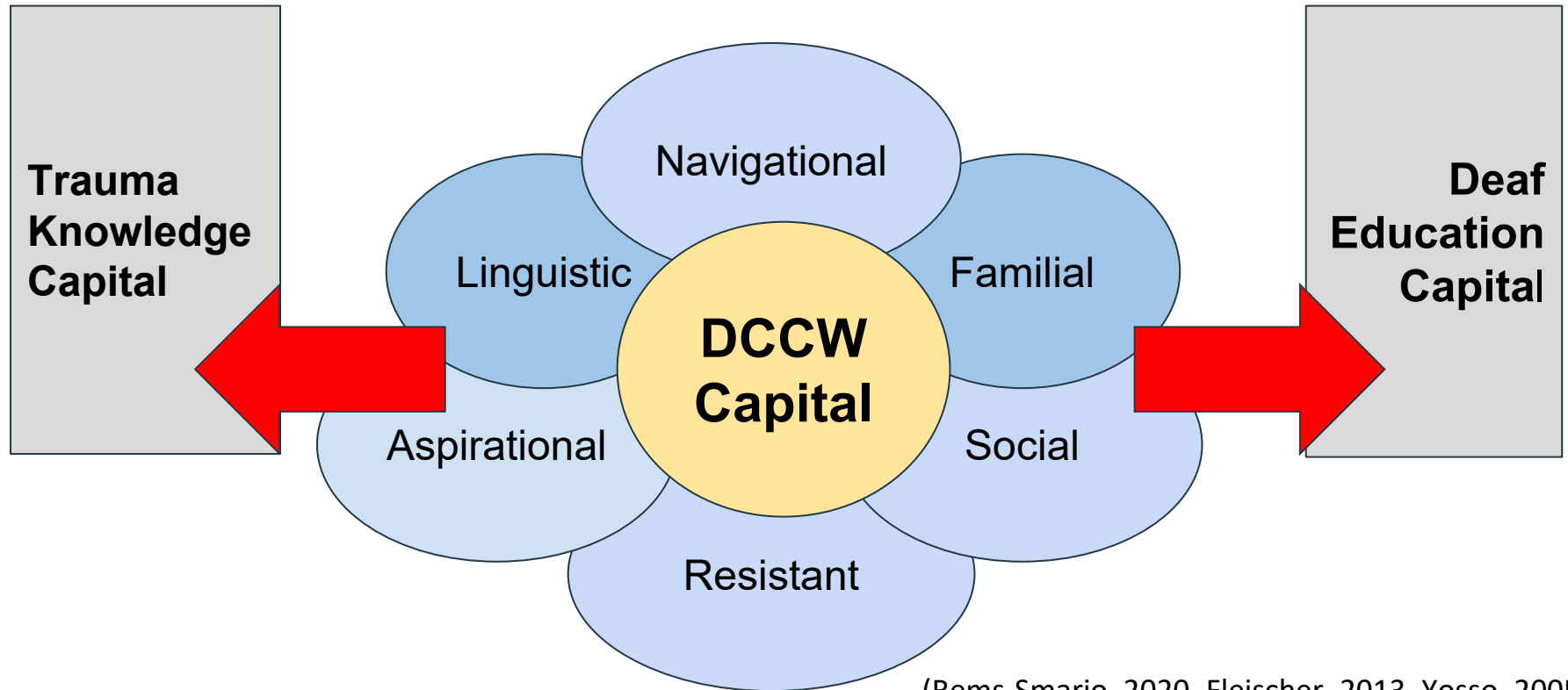
Why did California and Maine decide to write for the HRSA grant?

What can we do to ensure Deaf adults are fully embedded into state's systems?

The Importance of Deaf Professionals' Lived Experience



Deaf Professionals' Capital for Families of Deaf Infants



(Rems-Smario, 2020, Fleischer, 2013, Yosso, 2005)

Goals of CA EHDI: LEAD-K Family Services Program

1

hearing screening of all infants before 1 month of age

3

audiological diagnosis before 3 months of age if the infant does not pass hearing screening

6

enrollment in early intervention services by 6 months of age

6

connected with Family/Parent Mentor by 6 months of age

9

enrollment in Deaf Coach services as offered through early intervention by 9 months of age

Main Parts

EARLY START REFERRALS

PARENT MENTORS

DEAF COACH COORDINATORS

CA EHDI LEAD-K Family Services

Stakeholders

STATE PARTNERSHIPS: DHCS, DDS,
DSS, CDE, and more!



CA EHDI:

LEAD-K™

LANGUAGE EQUALITY & ACQUISITION FOR DEAF KIDS
A PROGRAM OF NORCAL SERVICES FOR DEAF & HARD OF HEARING

Family Services



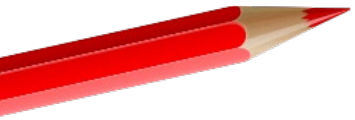
#ENDLANGUAGEDEPRIVATION

Who are the Deaf Coach Coordinators?



8 Regional Deaf Access Service Providers in California and 2 Option Schools participated in Deaf Coach trainings

Each agency provides support to families with Deaf Children with Deaf Coaches.



Contact your Local Deaf Coach Coordinator!

Local Deaf Coaches
Voice/Text
Hortel Services for Deaf and Hard of Hearing
amcg@hortelcenter.org
(916) 366-7900

Sacramento Deaf Coaches
Katherine Isbell
CCHAT Center
katherinei@cchatsacramento.org
(916) 361-7290

Bay Area Deaf Coaches
Susan Gonzalez
Deaf Counseling, Advocacy and Referral Agency (DCARA)
susan.gonzalez@dcara.org
510-343-6663
VP/Voice

Central Valley Deaf Coaches
Shelley Stout
Deaf and Hard of Hearing Services Center
shelley@dcchh.org
559-400-6245, VP

Inland Empire Deaf Coaches
Garden Crossman
crossman@dcchh.org
Center on Deafness Inland Empire
Voice: (951) 778-6909
T: (951) 814-8956

San Diego Deaf Coaches
Marie Marks
dcchhcoacheservices@dcchh.org
Deaf Community Services of San Diego
v: 619-550-3500

Los Angeles Deaf Coaches
Michelle Paez
mpaez@dcchh.org
Creator Los Angeles Agency on Deafness (LAAD)
(323) 892-2225

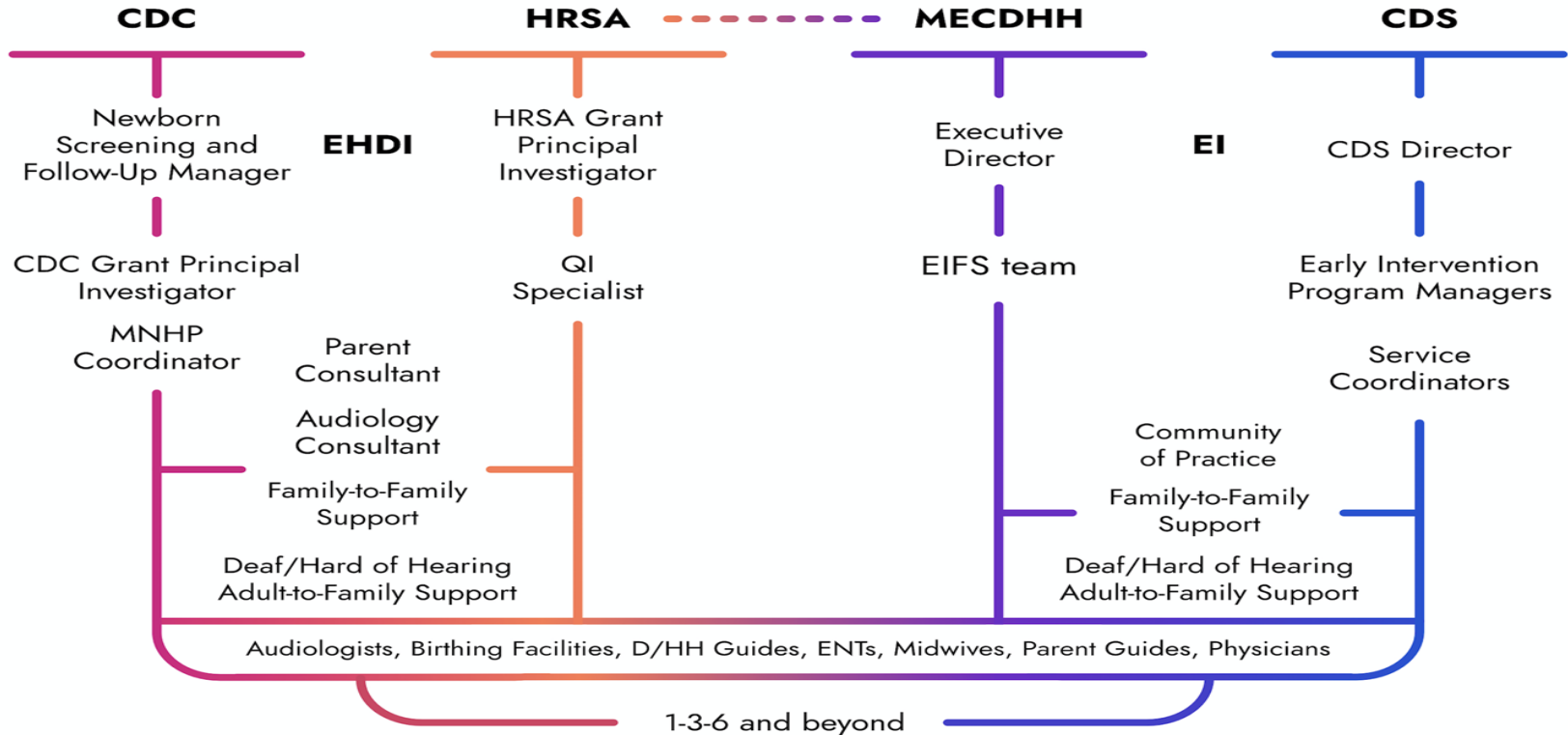
Bay Area Deaf Coaches
Dawana Jackson
Center For Early Intervention Deafness (CEID)
dawana@ceid.org

Orange County Deaf Coaches
Wendy Merritt
wmerritt@ocdeaf.org
Orange County Deaf Equal Access Foundation

DCARA services extend to the following counties in California:
Alameda
Contra Costa
Del Norte
Maricopa
Lake
Maricopa
Mendocino
Napa
San Francisco
San Mateo
Santa Clara
Santa Cruz
Solano
Sonoma

<https://leadfamilyservices.org/deaf-coach-services-for-families/>

Maine Early Hearing Detection and Intervention (EHDI) System



- CDC** Centers for Disease Control and Prevention
- CDS** Child Development Services
- D/HH** Deaf or Hard of Hearing
- EHDl** Early Hearing Detection and Intervention
- EI** Early Intervention
- EIFS** Early Intervention and Family Services

- ENT** Ear, Nose, and Throat Physician
- HRSA** Health Resources and Services Administration
- MECDHH** Maine Educational Center for the Deaf and Hard of Hearing
- MNHP** Maine Newborn Hearing Program
- QI** Quality Improvement

Deaf Engagement in Maine's EHDI and EI Systems

- Maine's HRSA grant is led by a Deaf individual
- The EHDI team has Deaf and hard of hearing Guides and Mentors
- Maine's Part C program embeds Deaf and hard of hearing adults into the state's required process through a memorandum of understanding between Maine's Part C Agency and the state Deaf Education Agency – MECDHH/GBSD
- Deaf Council
- Boards and Commissions
- Deaf/Parent Feedback Group

Deaf Engagement in Maine's System

“ALL Families will have the opportunity to meet Deaf and hard of hearing adults”



Deaf Mentor- Family Training

- SKI HI program
- ASL Family Training
- Requires Ski Hi Deaf Mentor training and certification

Deaf Guide Program (GBYS)

Deaf adults from various backgrounds

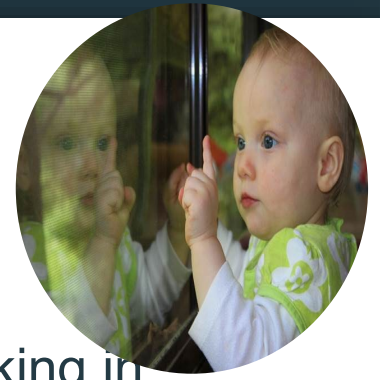
Current Hands & Voices President is Deaf

- Personal history
- What they have learned
- What insight can they share with new families
- Answer questions
- Natural interactions at events

Strategies to Ensure Engagement

- Training for Deaf adults
- Importance of hearing allies
- Prioritize Deaf engagement
- Collect family feedback

Panel Questions



1. What is important to you as a Deaf professional working in the EHDI system?
2. What simple strategies can states utilize to ensure Deaf and hard of hearing individuals are engaged in their state's system?

Q&A





Contact EHDI Coordinators
Sfarinha@norcalcenter.org
ismario@cddf-cde.ca.gov

Feel free to contact LEAD-K Family Services:
Cheryl@leadkfamilyservices.org

#ENGLANGUAGEDPRIVATION

Thank you for being here!

