



The Role of HRSA in the EHDI System

EHDI 22nd Annual Early Hearing Detection & Intervention Meeting

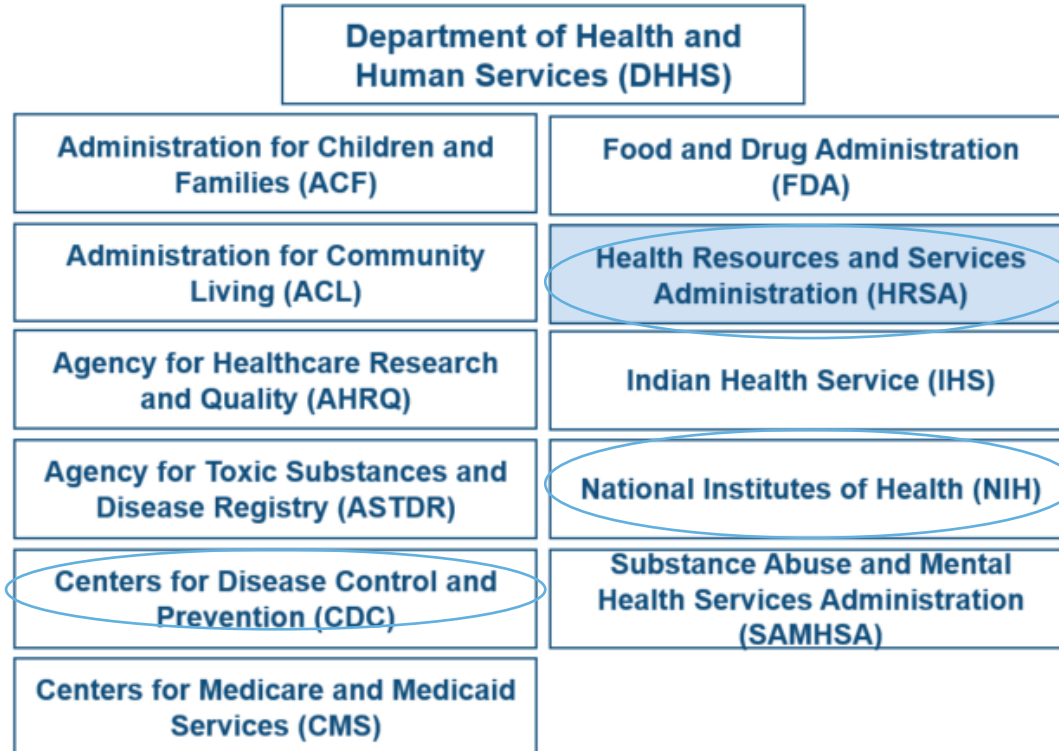
March 17, 2024

Sandra A. Battiste, MPH
Public Health Analyst
Maternal and Child Health Bureau (MCHB)

Vision: Healthy Communities, Healthy People



Health Resources and Services Administration



Mission:

To improve health outcomes and address health disparities through access to quality services, a skilled health workforce, and innovative, high-value programs.

Vision:

Healthy Communities, Healthy People

MCHB Strategic Plan

Mission

To improve the health and well-being of America's mothers, children, and families.

Vision

Our vision is an America where all mothers, children, and families thrive and reach their full potential.

MCHB Goals

ACCESS

Assure access to high-quality and equitable health services to optimize health and well-being for all MCH populations.

EQUITY

Achieve health equity for MCH populations.

CAPACITY

Strengthen public health capacity and workforce for MCH.

IMPACT

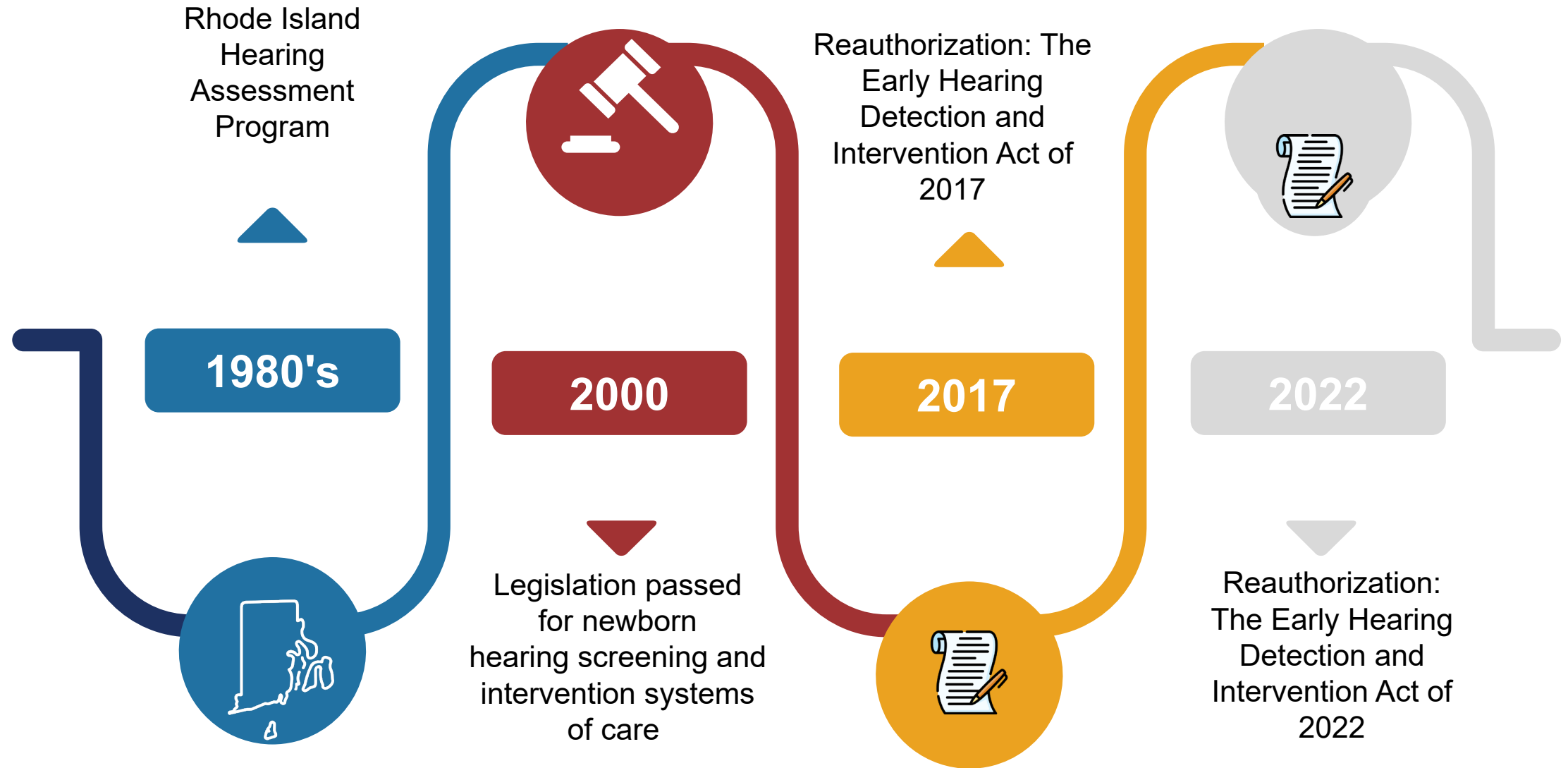
Maximize impact through leadership, partnership, and stewardship.

MCHB *Blueprint for Change for CYSHCN*

Children and youth with special health care needs enjoy full lives and thrive in their communities from childhood through adulthood



EHDI Legislative Authority



Specific Responsibilities of HRSA

The Secretary, acting through the Administrator of the Health Resources and Services Administration, shall make awards of grants or cooperative agreements to:

- Develop and monitor the efficacy of statewide programs and systems for hearing screening of newborns, infants, and young children;
- Prompt evaluation and diagnosis of children referred from screening programs;
- Appropriate educational, audiological, medical, and communication (or language acquisition) interventions (including family support), for children identified as deaf or hard-of-hearing

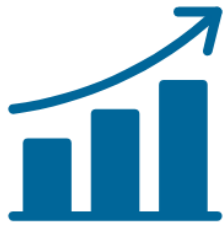
Public Health Service Act, Title III, Section 399M (as added by P.L. 106-310, Sec. 702; as amended by P.L. 111-337 and P.L. 115-71)

Learn more at <https://mchb.hrsa.gov>

6



EHDI's Impact



98 percent of U.S.-born infants are now screened for hearing loss usually before leaving the hospital



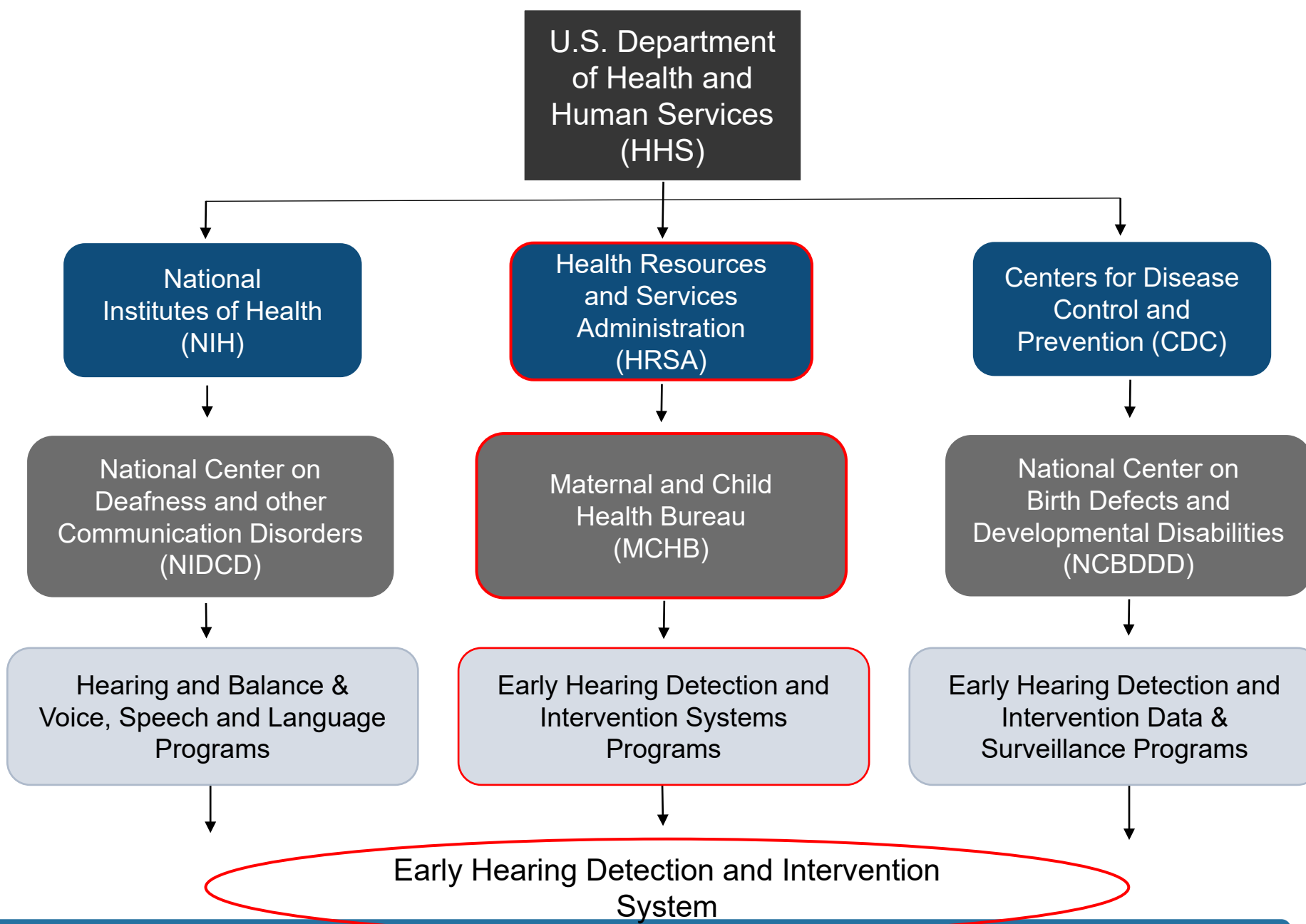
Since 2005 over 84,000 D/HH infants in the U.S. have been identified early



\$200 million in education costs are saved each year in the U.S. due to newborn hearing screening

Center for Disease Control and Prevention. (2022). [CDC's Progress in Detecting Infant Hearing Loss \[Fact sheet\]](#).

Learn more at <https://mchb.hrsa.gov>



Key Federal Partners in the EHDI System

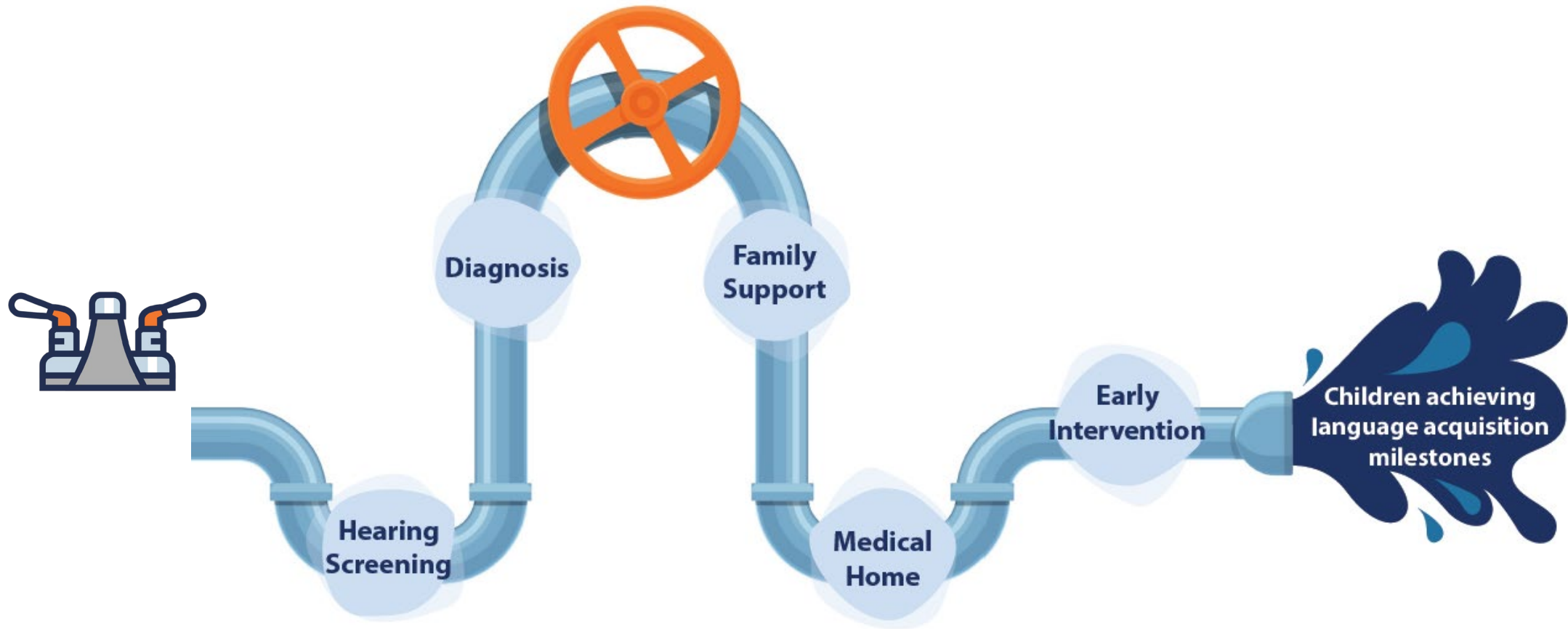
U.S. Department of Health & Human Services

- **Centers for Disease Control and Prevention (CDC):** EHDI Data & Surveillance Programs
- **Health Resources and Services Administration (HRSA):** EHDI Systems Programs
- **National Institutes of Health (NIH):** Hearing and Balance & Voice, Speech and Language Research Programs

U.S. Department of Education

- **Office of Special Education Programs (OSEP):** IDEA Part C (Early Intervention) Program

Supporting the EHDI "Pipeline" or "Pathway"



Support from HRSA: EHDI 2024-2029

EHDI National Network

States and Territories



59 Grants

EHDI system
& infrastructure

LEND Pediatric Audiology



12 Supplements

Workforce
development for
LEND trainees

Implementation and Change Center (ICC)



1 Cooperative Agreement

TAT to achieve
state/territory
goals & objectives

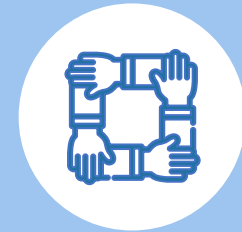
Family Leadership in Language and Learning Center (FL3)



1 Cooperative Agreement

Family support
& engagement

Provider Education Center (PEC)



1 Cooperative Agreement

Provider* support
& education

Learn more at <https://mchb.hrsa.gov>

11



EHDI Team



Treeby Brown
Integrated Services Branch



Sandra Battiste



Shelby Graves



Akilah Heggs



Sarah Beth McLellan

Branch Chief

Public Health Analysts (Project Officers)

Team Lead



Hannah Kotz



Jenny Nguyen



Dana Simms



Learn more at <https://mchb.hrsa.gov>



Sandra A. Battiste, MPH
Division of Services for Children with Special Health Needs
Maternal and Child Health Bureau (MCHB)
Health Resources and Services Administration (HRSA)
Email: SBattiste@hrsa.gov or EHDI@hrsa.gov
Phone: 301-443-0223
Web: mchb.hrsa.gov



Connect with HRSA

Learn more about our agency at:

www.HRSA.gov



[Sign up for the HRSA eNews](#)

FOLLOW US:

