

# 2025 EHDI Annual Conference

## Bridging Gaps: Enhancing Collaboration between EHDI and Part C Programs

March 10, 2025



**Liz Schardine,  
Audiologist  
Kansas Early Hearing Detection and Intervention Coordinator**

**Heather Staab,  
Part C Education and Outreach Consultant  
Kansas Early Childhood Developmental Services**

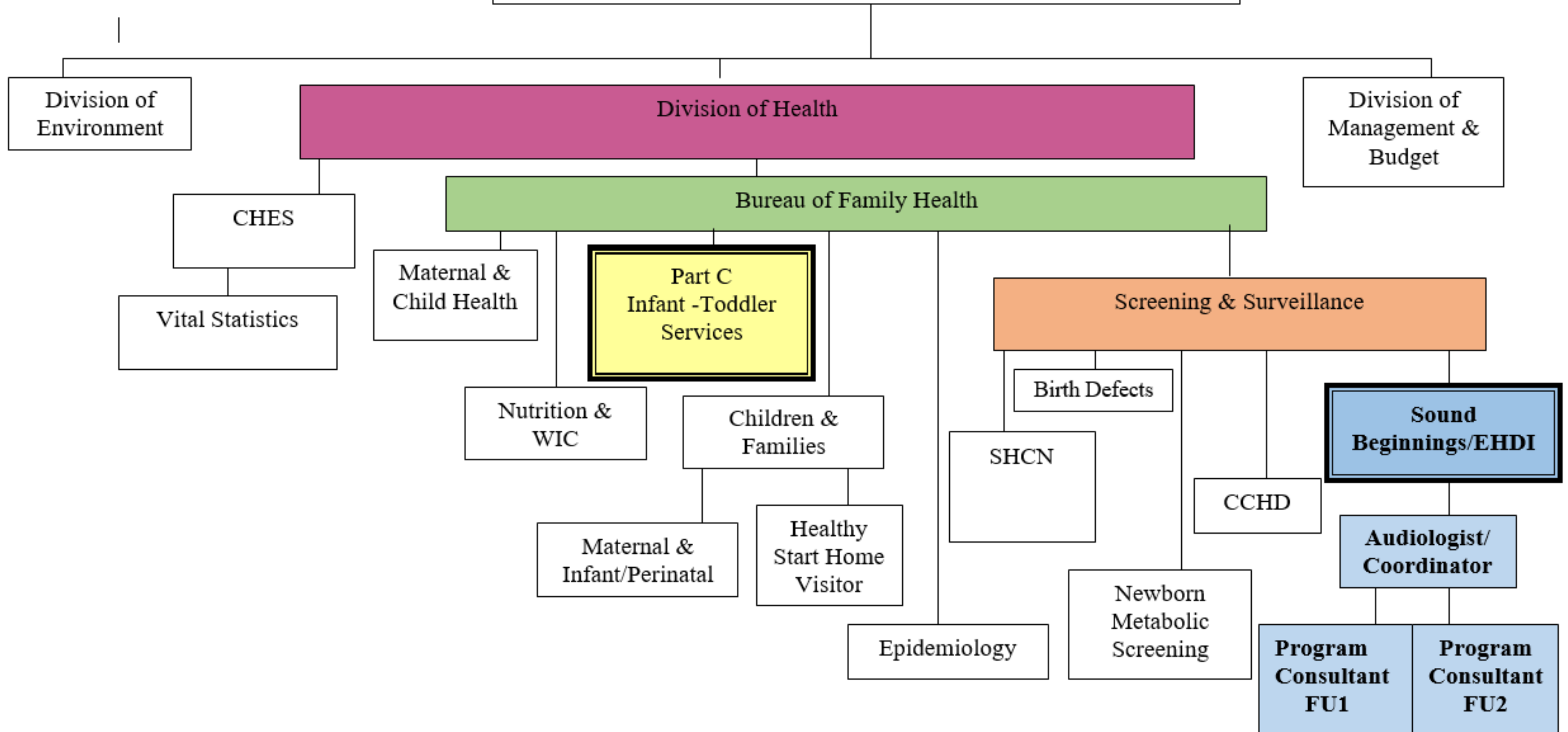
# BUREAU OF FAMILY HEALTH

KANSAS DEPARTMENT OF HEALTH



TOPEKA, KANSAS

# Kansas Department of Health and Environment





# Silo Mentality

*['sī-(,)lō men-'ta-lə-tē]*

A reluctance to share information with employees of different divisions in the same company.



# INTER MIXING



# BREAK DOWN SILOS

- CREATE CROSS-FUNCTIONAL TEAMS,
- SET COMMON GOALS,
- ENCOURAGE OPEN CROSS-DEPARTMENTAL COMMUNICATION,
- PROMOTE A UNIFIED VISION,
- IMPLEMENT COLLABORATION TOOLS,
- PRIORITIZE TEAM BUILDING ACTIVITIES,
- AND FOSTER A CULTURE OF TRANSPARENCY WHERE INFORMATION IS READILY SHARED ACROSS TEAMS.





# The power of communication





# **Advisory Committee**

Active Participants

Provide Stakeholder Reports

**What can I (EHDI) do for Part C?**

Invite  
Part C to the  
EHDI Conference



# Part C Hearing Screening Guidelines



# Provide OAE Training to Providers

6 trainings a years across the state

- Part C educator travels with me
- Teach about EHDI
- Teach about the importance of access to Language and Speech
- Explain referral process and follow up if child does not enroll in Part C (How hard we work to educate and get families to enroll)
- Talk about their role in the EHDI process
- Teach how to screen using OAE, Tympanometry and Otoscopy
- Importance of the annual hearing screens
- Provide Family Support/Engagement Resources

# DHH Symposium for Part C Providers

Partnered with Part C Educator and the Kansas School for the Deaf Early Intervention Program.

- National Deaf Speaker (many had no experience with deaf speaker or interpreters)
- Goal for the symposium
  - + is to create awareness and provide education of the deaf culture and community.
  - + Provide resources for you to use with the families of children identified as deaf or hard of hearing that you serve.
  - + Share outcomes of the Language Assessments performed on our DHH children.
  - + And lastly provide guidance on intervention strategies and applications for working with the deaf and hard of hearing children.
- + Get them involved





# Border State Part C Collaboration



# Kansas Division of Early Childhood Conference

Present on Late Onset Hearing Loss

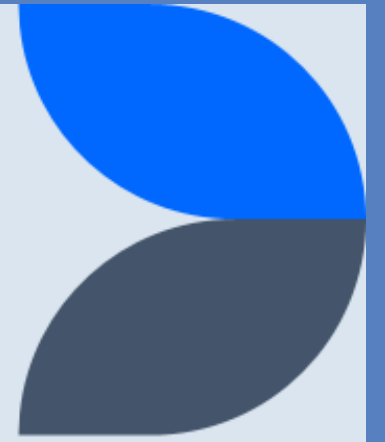
Exhibitor Booth



# Surveyed Part C Providers

- Experience working with DHH
- Proficiency in ASL
- DHH Education

\* Data collected drove the need to help provide EI programs with more resources to work with families and educate themselves of DHH.



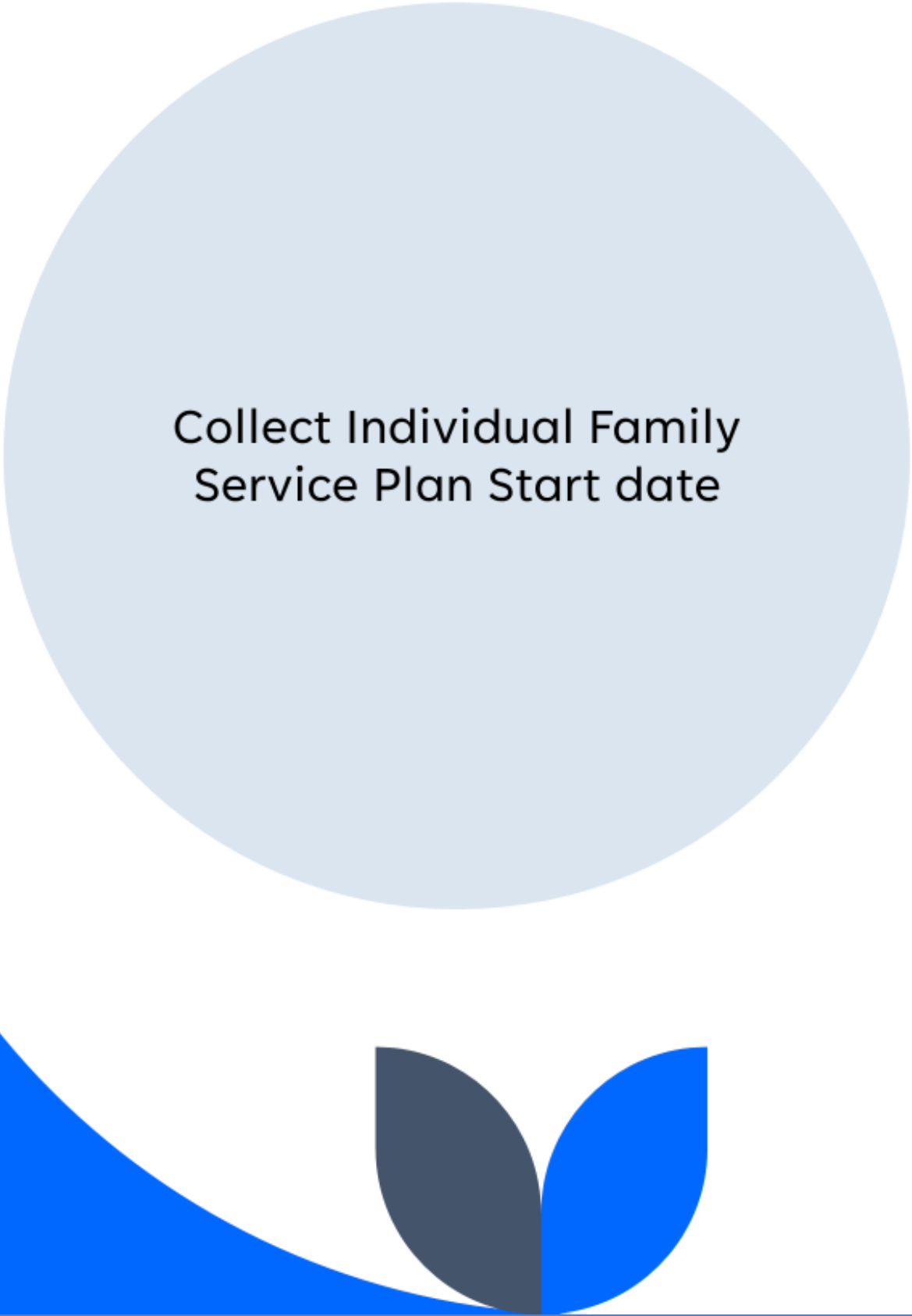
# Resources for Providers

- Provider initial Call Script – consistency across programs
- DHH Toolkit
- Ongoing trainings and resources
- EHDI being a partner and resource



# What do I get from Part C ?





Collect Individual Family  
Service Plan Start date

## Access to Part C Database

- Signed MOA
- Read only rights
- Start Dates
- Exit Dates
- Reason why not enrolled
- Parent Information
- Cross Reference for late Identified receiving Part C services



A word cloud visualization centered around the text "EHCI Part C Collaboration". The words are arranged in a circular pattern, with the largest words being "EHCI", "Part C", "Collaboration", "Data", "Friendship", "Dynamic", "Partnership", "Integrity", "Resources", "Hearing Loss", "Language", "Communication", "Support", "Engaging", "Understanding", "Agreement", "Certification", "Trainings", "Ehdi", "Part C", "Data", "Friendship", "Dynamic", "Partnership", "Integrity", "Resources", "Hearing Loss", "Language", "Communication", "Support", "Engaging", "Understanding", "Agreement", "Certification", "Trainings", "Ehdi". The words are color-coded: purple for "EHCI", blue for "Part C", green for "Collaboration", and black for "Partnership", "Integrity", "Resources", "Hearing Loss", "Language", "Communication", "Support", "Engaging", "Understanding", "Agreement", "Certification", "Trainings", "Ehdi".

# Thank you!

## Kansas EHDI and Part C

Liz Schardine    [elizabeth.schardine@ks.gov](mailto:elizabeth.schardine@ks.gov)  
Heather Staab    [heather.staab@ks.gov](mailto:heather.staab@ks.gov)