

# Building Safety Nets: Maine's Newborn Hearing Program & Early Intervention Collaboration

EHDI 2025



# Amy Spencer MS CCC/SLP, TOD

- ★ Early Intervention and Family Services Coordinator.
- ★ Serve on the Maine Newborn Hearing Program Board, the Maine Interagency Coordinating Council, and active member of the Earliest Interactions Maine/ HRSA team.
- ★ Initiated and continuously refine the ELCO process.
- ★ Live in Southern Maine exploring both ocean and mountains with my husband and two young daughters.



# Amber Woodcock

- ★ Parent to a DHH Child and two typically hearing children
- ★ Maine Hands & Voices President
- ★ GBYS Coordinator for Maine Hands & Voices
- ★ ASTra Coordinator for Maine Hands & Voices
- ★ Parent Consultant for the Maine Newborn Hearing Program



# Anne Banger

- ★ Parent of two adults, oldest one DHH due to Connexin 26 and youngest is typically hearing
- ★ Coordinator of Maine's Newborn Hearing Program (MNHP)
- ★ Maine's EHDI Coordinator
- ★ Was Maine's Follow-Up Coordinator before becoming EHDI Coordinator
- ★ PI for the EHDI HRSA and EHDI US CDC grants
- ★ Oversees Maine's Newborn Screening Portal - Maine's EHDI-IS



# Disclosures

Amy Spencer is a paid employee of MECDHH/GBSD as their Early Intervention and Family Services Coordinator.

Amber Woodcock is paid as a contractor through the HRSA Grant.

Anne Banger is a paid employee of State of Maine, DHHS, CDC as the EHDI Coordinator.



# Today's Objectives:

Participants will be able to list three methods used to create a smooth, less fragmented system of referral to early intervention programs that increases family participation.

Participants will be able to describe how these methods can be used to improve access to early intervention participation.

Participants will be able to outline how they can apply these methods in their own state.



### Anne's Roles:

MNHP  
Coordinator

Maine's EHDI  
Coordinator

CDC/ HRSA  
Grant Primary  
Investigator

### Amber's Roles:

MNHP Parent  
Consultant

Maine Hands &  
Voices President

Maine Hands &  
Voices  
GBYS/ASTra  
Coordinator

EHDI Team  
Member

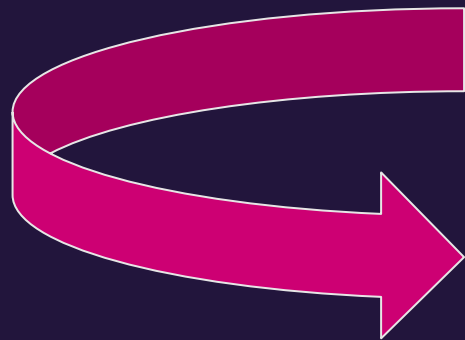
### Amy's Roles:

MECDHH Early  
Intervention  
Coordinator

Interagency  
Coordinating  
Council Member

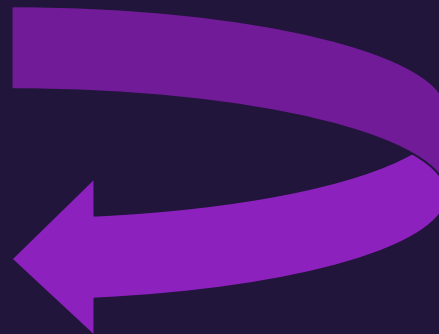
EHDI Team  
Member





Communication

Shared  
Documentation  
Access



Cross Checking





# Defining Responsibilities

Closing the Loop 1 -3-6



# EHDI/ MNHP Coordinator: Anne

**Alerted to Referred  
children in Maine**

**Refers to EI for ME**

**Communicates referrals  
to Parent Consultant and  
EI Coordinator**

**Monitors Identification  
Status/ Audio Report  
Input in EHDI-IS**

**Monitors EI  
Enrollment/ Tracking  
Log Input in EHDI-IS**

**Initiates changes in  
EHDI-IS as needed**



# Parent Consultant & GBYS Coordinator: Amber

Alerted to Referred children in Maine

Contacts families and PCPs to ensure they are aware of audio appts

Makes reminder phone calls/texts about audio appts

Follow-up phone call text post audio appt and D/X

Inputs tracking logs in child's record in EHDI-IS to document interactions with families and providers

Puts referred and identified children on shared spreadsheet

Connects D/X families with GBYS Guides - Parent Guides by 6 months and DHH Guides by 9 months

Meets with EI & EHDI Coordinators monthly to discuss identified children and EI status



# DHH EI Coordinator: Amy

Alerted to Identified  
and Referred to EI

Follow up on referral  
with DHH provider &  
site for EI for ME

Input  
communication in  
Tracking log in EHDI-  
IS.

Meets with Parent  
Consultant and EHDI  
Coordinator Monthly  
to fill any gaps

Meets with EI for Me  
Coordinator monthly

Input EI Enrollment  
Status in EHDI-IS  
once confirmed.

Coordinates  
K Readiness Maine process & data



# Key Element to Building Safety Nets:

Access to EHDI-IS

Data Sharing

EHDI Team includes EI

Regular Communication & Meetings

Each child has a unique record in the EHDI-IS created by birth certificate

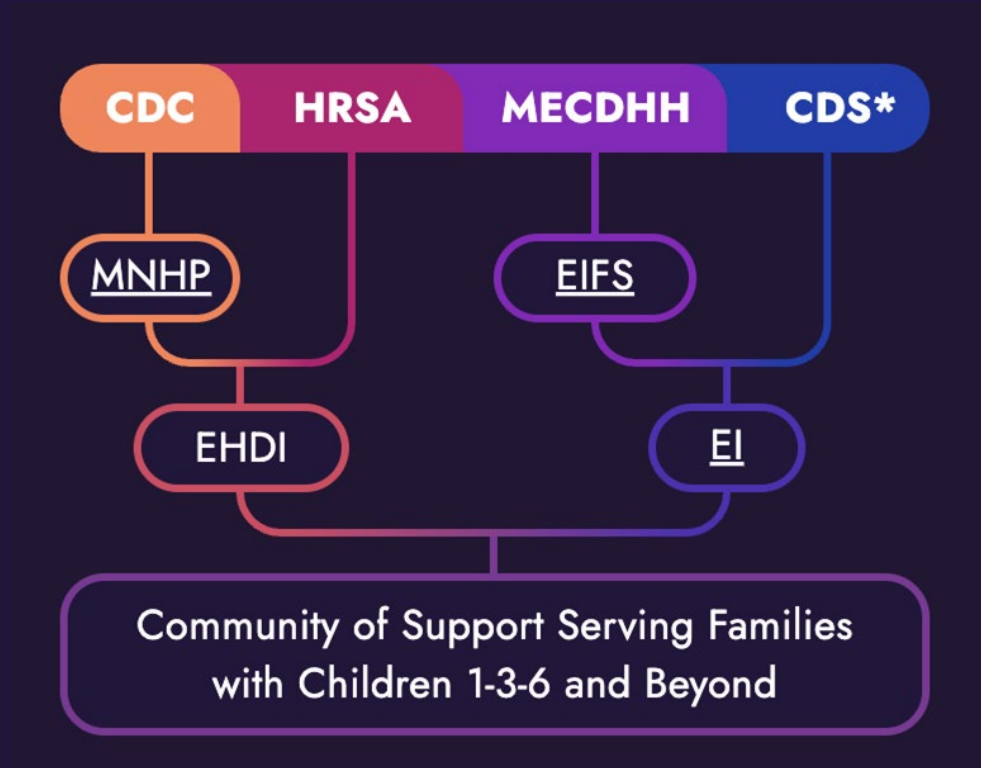


# How can you build safety nets in your state?

Be Creative

Build Collaborative  
Relationships with  
Invested Parties

Be Persistent!



# Maine's EHDI Website

## Welcome to Earliest Interactions

We are a HRSA grant-funded program of the Maine Newborn Hearing Program that supports families of children who are deaf and hard of hearing throughout their journeys, from screening, to identification, to early intervention and beyond.



**Family  
Resources**



**Professional  
Resources**



# How to Contact Us:

Amy Spencer:

[amy.spencer@mecdhh.org](mailto:amy.spencer@mecdhh.org)

Amber Woodcock:

[amberwoodcock85@gmail.com](mailto:amberwoodcock85@gmail.com), [mainehandv@gmail.com](mailto:mainehandv@gmail.com)

207-530-0023 call/text/Facetime

Anne Banger:

[anne.banger@maine.gov](mailto:anne.banger@maine.gov)

207-287-8427

