

Supporting Families of Deaf and Hard of Hearing Children Through the Understanding of Best Practices

Presented By: Kat Ross

Authors: Kat Ross, Kristina Blaiser, PhD., Marie Martinez,
Miranda Nelson, Lesa Coleman



Who Are We?

We are HATCH Family Support at Idaho State University

We are parents of children who have a hearing difference

Receive direct referrals from Idaho Sound Beginnings



Goal For Today



Weave Together:

- Knowledge of the parent experience
- Research-informed best practices
- Parent empowerment
- Opportunities for system improvement



Knowledge of the Parent Experience

What does the Parent Experience look like?



*"I never even knew
there was a
Newborn Hearing
Screening."*

My Baby Has a Hearing Difference



The audiology appointment is over, and the family goes home.

Now, the real journey begins.

Go home and love your baby. ❤️



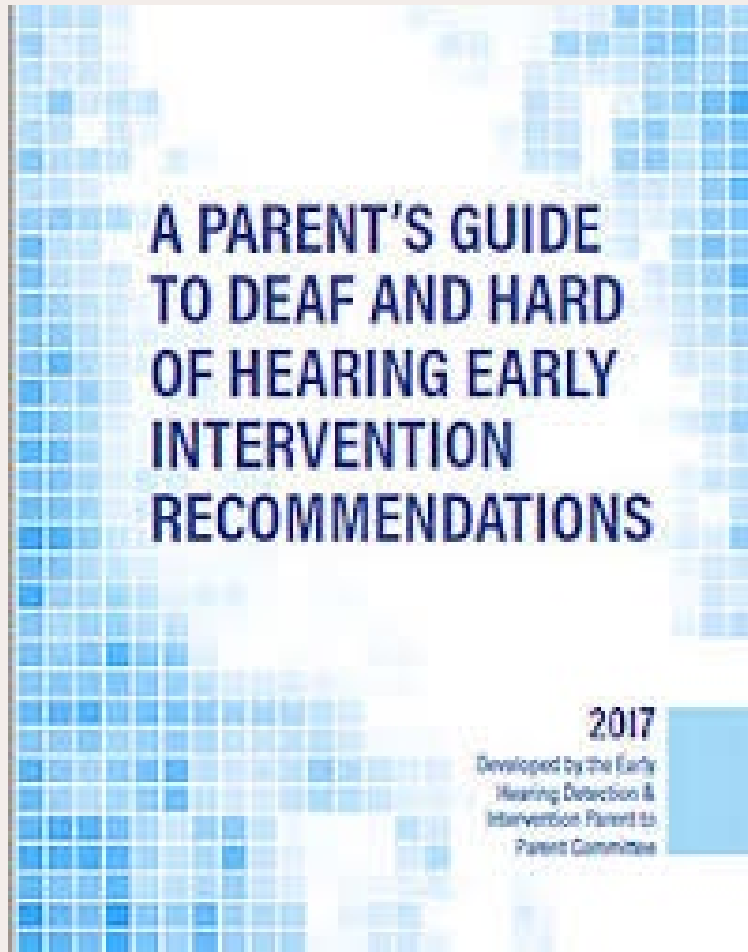
Research-Informed Best Practices

You Don't Know What You Don't Know



This is where Family-to-Family Support and good quality, evidence-informed early interventions can make a huge and positive impact!

2017 A Parent's Guide to Deaf and Hard of Hearing Early Intervention Recommendations



2017 A Parent's Guide to Deaf and Hard of Hearing Early Intervention Recommendations

Parents were asking,
“How do we know if our
child is receiving the right
services?”.



Each of the 12 goals is
broken up into:

- The goal

- What this
means to
me

- I have the
right to
expect

The 12 Goal Categories

Timely and coordinated entry into Early Intervention programs

Timely access to Service Coordinators who have specialized knowledge and skills

E.I. providers who have professional qualifications, core knowledge and skills

Children with additional disabilities

Families from culturally diverse backgrounds and/or from non-English-speaking homes

All children should have their progress monitored every six months

Monitoring for children who are identified with hearing loss of any degree

Families will be active participants at the state/territory and local levels

Access to other families who have children who are D/HH

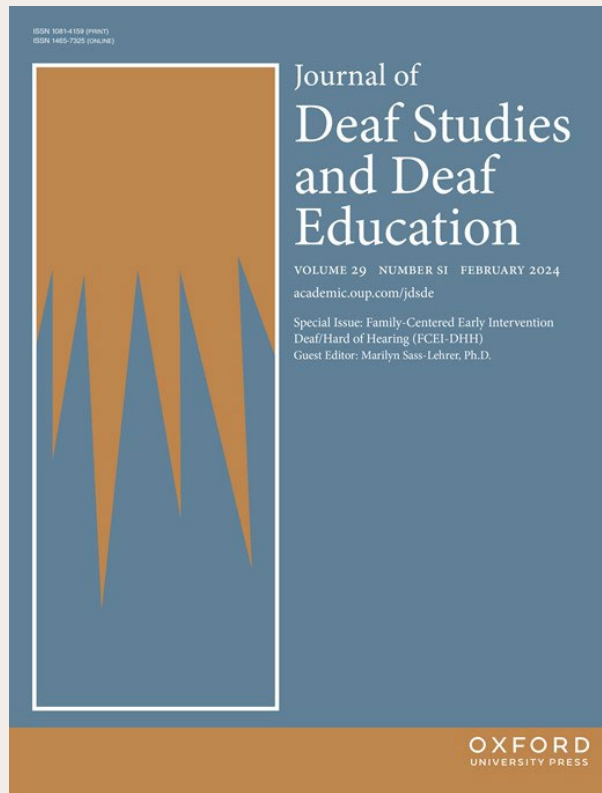
Individuals who are D/HH will be active participants in the development and implementation of EHDI systems

Support, mentorship, and guidance from individuals who are D/HH.

Best practices are applied in the implementation of the intervention children and families receive.

FCEI- DHH

Journal of Deaf Studies and Deaf Education



The brilliant work of Mary Pat Moeller, Ph.D.,
Amy Szarkowski, Ph.D., and others

What Does that Look Like in Real Life?



- Get to know the family
 - Identify unique strengths
 - Identify unique challenges
- Use your knowledge of the family to tailor and support their needs
- Encourage best practices through a FCEI lens



Parent Empowerment



Informed Parents are Empowered Parents

Synchronous Support Models

Tuesdays @ 10



Synchronous Support Models

Events
Throughout
the Year

2018, 6yrs



2023, 11yrs



Asynchronous Support Models

Weekly HATCH Newsletter



Asynchronous Support Models

Bright by Text





Bright by Text

Are you concerned about your child's hearing?

Text **HEAR** to 274 448

Info, tips and resources to empower & support you and connect you to help in your area.

ASHA
American Speech-Language-Hearing Association

Asynchronous Support Models

WhatsApp
Spanish Speaking
Families





Opportunities for System Improvement

Opportunities for System Improvement

If we empower families with the understanding of best practices, our systems better be able to provide them!



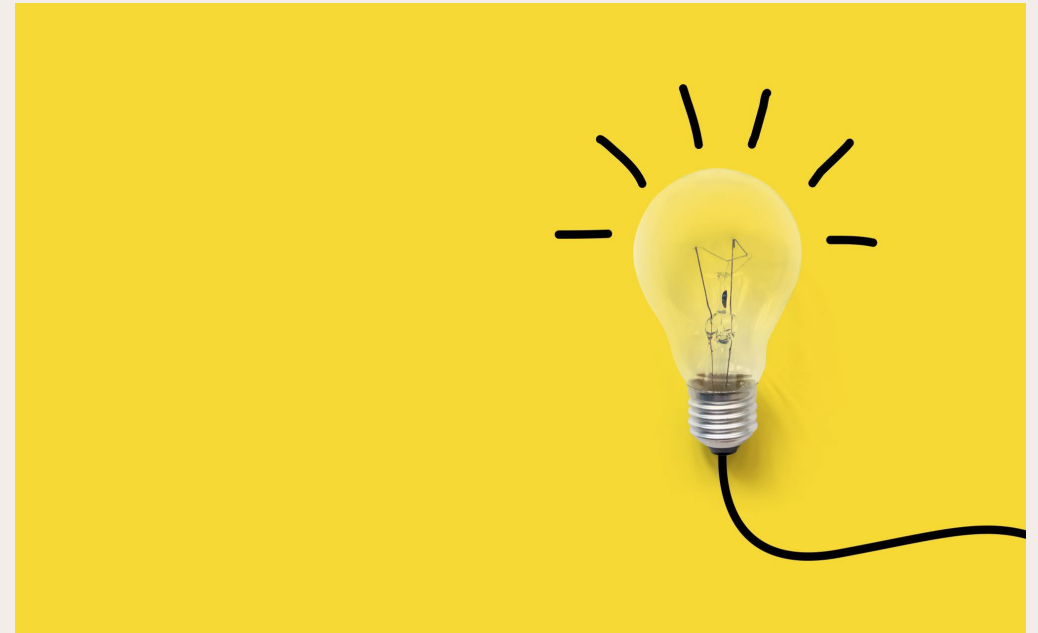
Opportunities for System Improvement

We need Early Intervention systems that give families access to experienced providers who can meet the unique needs of DHH babies and toddlers while understanding and embracing the family-centered approach.



Be Innovative!

- Do we have to do things the way they have always been done?
- Are there better ways to do something?
- What are the families needing/asking for?



In Conclusion and With Inspiration

"It always seems impossible until it's done."

-Nelson Mandela



Questions Comments

Thank
you!

Kat Ross

kathleenross2@isu.edu

Kristina Blaiser

kristina.blaiser@isu.edu