

# **Florida Department of Health**

## **Parent-to-Parent Support at Initial Hearing Loss Diagnosis Contact**

**Florida  
HEALTH**

**March 10, 2025**

# Presenter



## Miranda Nerland

cCMV Follow-up Specialist/Parent Consultant  
Newborn Hearing Screening Program  
Division of Children's Medical Services

## Natasha Rich

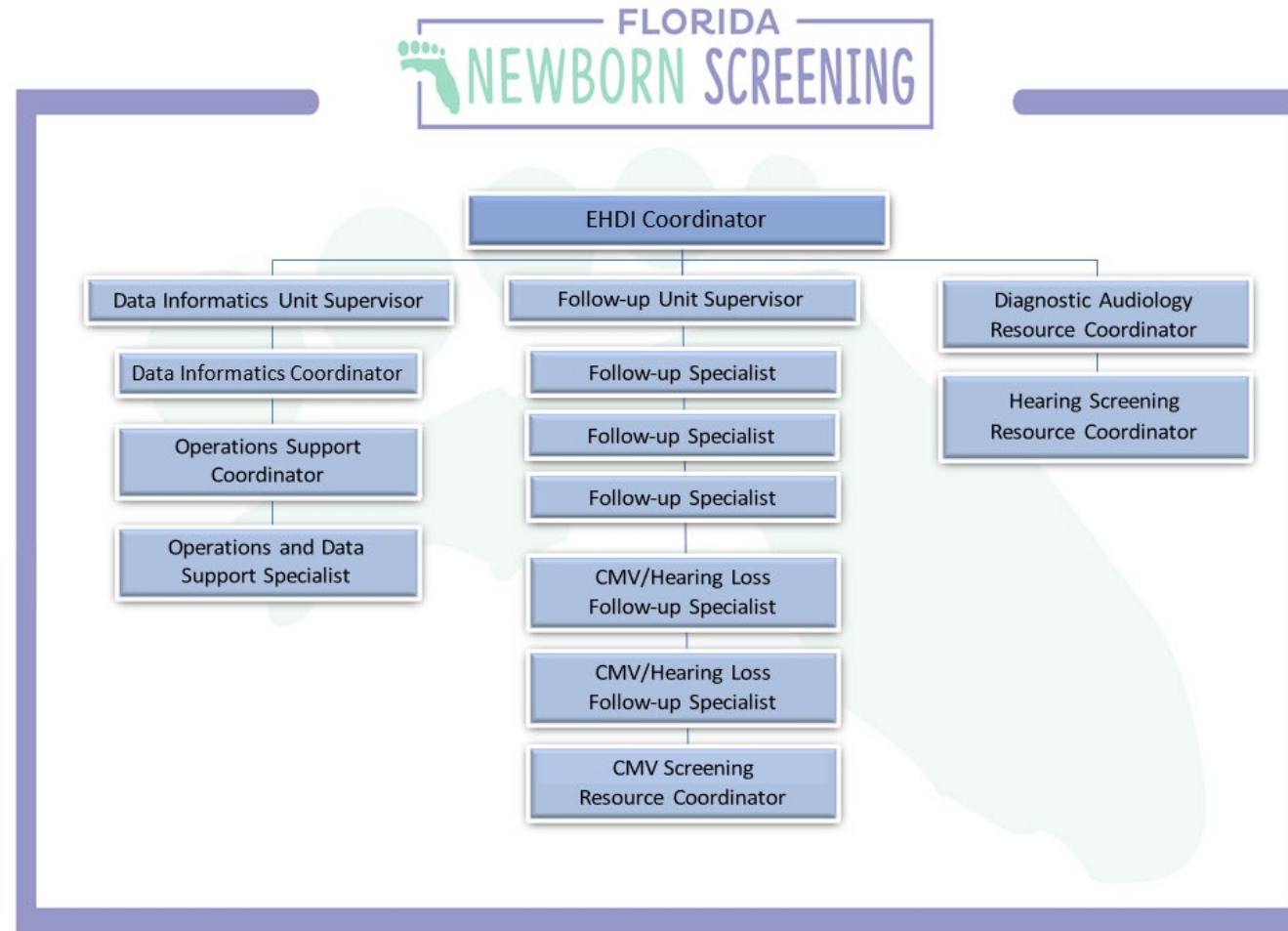
cCMV Follow-up Specialist/Parent Consultant  
Newborn Hearing Screening Program  
Division of Children's Medical Services

# Florida Program Statistics

## 2023 Birth Data:

- Live Births: 221,413
- Newborn Hearing Screens: 217,082
- Hearing Screen Refers/Fails: 8,779
- Hearing Loss Cases: 305

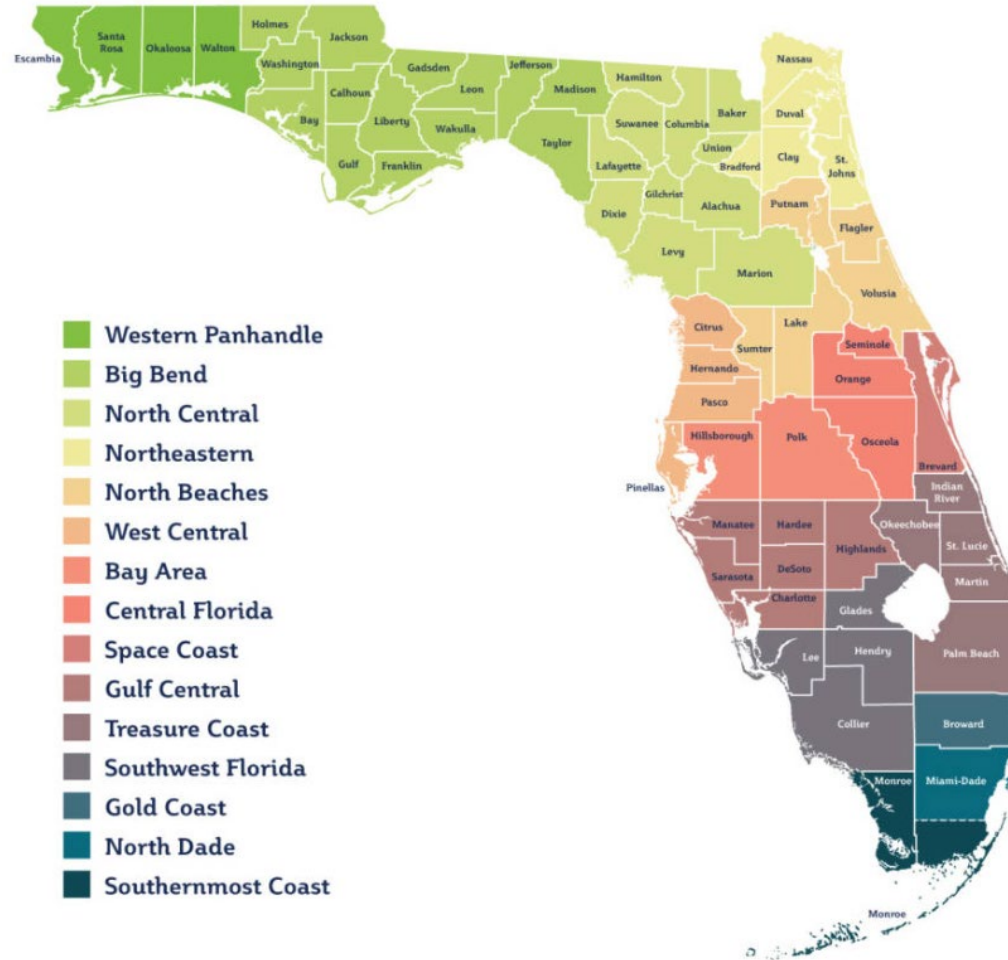
# Program Structure



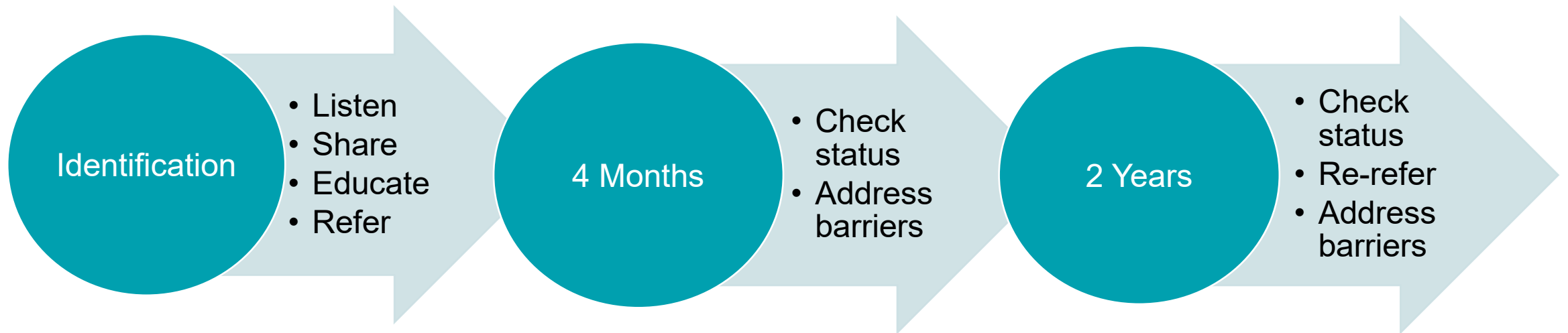
# Key Partnerships

- Early Steps – Individuals with Disabilities Education Act, Part C, early intervention provider:
  - Data system workflow
  - Data use agreement
  - Reciprocal communication process
- Parent Empowerment Program – Parent support provider:
  - Deaf mentors
  - Individualized parent support
  - Parent support network
  - Information and resources

# Early Steps Regions



# Follow-up Process



# Value of Parent-led Follow-up

Parents understand:

- The emotional and financial strain on families.
- The importance of early intervention.
- The need for ongoing family support.

Parent-led follow-up is authentic and provides:

- First-hand information about resources, services, and barriers.
- Understanding of varying levels of family readiness to engage.
- Parent perspective on program design and procedures.



# Key Factors for Success

Key factors for successful parent-led follow-up include:

- Leadership buy-in and support
- Strong organizational partnerships and collaborations
- Hiring, training, and supporting parent professionals
- A growth mindset

# Contact Information

## Miranda Nerland

cCMV Follow-up Specialist/Parent Consultant  
Miranda.Nerland@FLHealth.gov

## Natasha Rich

cCMV Follow-up Specialist/Parent Consultant  
Natasha.Rich@FLHealth.gov