



EHDI CONFERENCE

8th Annual Early Hearing Detection and Intervention Conference



PROGRAM BOOK

InterContinental Dallas Hotel • Addison, Texas

MARCH 9-10, 2009

www.EHDIconference.org

EHDI Conference 2009 **WELCOME**

Welcome to the 2009 National EHDI Conference! This is the eighth time that a diverse group of people from all over the United States and the world have assembled with the goal of providing better services to infants and young children who are deaf or hard-of-hearing and their families.

The EHDI Conference provides a wonderful opportunity to become energized by new ideas, evaluate what we have been doing, re-connect with old friends and make new ones, discover resources that can help achieve our goals, and gain a better perspective about what is most important. Through presentations, posters, roundtables, and exhibits, we will learn about, critique, and discuss every aspect of a successful EHDI system.

We hope the conference will foster respectful discussion that motivates everyone to add information to the pool of knowledge, whether sharing empirical research or the wisdom distilled from clinical, educational, and family experiences. It is only by understanding and thoughtfully considering the contributions of all stakeholders that we can achieve our goal of having the best possible EHDI programs for children and families.

Enjoy the conference, learn much, and then return home to make your EHDI program better. At the very first National EHDI Conference in 2002 in Washington, DC, the statement of Margaret Meade was cited:

Never doubt that a small group of thoughtful, committed citizens can change the world; indeed it is the only thing that ever has.

That is still true in 2009, and the world still needs changing. Enjoy your time in Dallas, learn a lot, be re-invigorated, and then go back to your homes to continue changing the world!

CO-SPONSORED BY

The American Academy of Pediatrics (AAP)

The U.S. Department of Health and Human Services: Centers for Disease Control and Prevention (CDC)

The U.S. Department of Health and Human Services: Health Resources and Services Administration (HRSA)

The National Center for Hearing Assessment and Management at Utah State University (NCHAM)

CONFERENCE MANAGEMENT SERVICES PROVIDED BY

USU Conference Management Services
University Inn & Conference Center
Utah State University
5005 Old Main Hill
Logan, UT 84322-5005
www.conference.usu.edu

PHOTOS IN CONFERENCE MATERIALS COURTESY OF

Advanced Bionics
Centers for Disease Control & Prevention
Cochlear Americas
John Tracy Clinic
MED-EL
Natus Medical
NCHAM
Oticon A/S
Phonak
Siemens Hearing Instruments
Sound Beginnings/USU



EHDI Conference 2009

TABLE OF CONTENTS



| | |
|--|--------------------|
| Welcome/Co-Sponsors..... | Front Inside Cover |
| Table of Contents | 3 |
| About the EHDI Conference/Learning Objectives | 4 |
| Acknowledgments..... | 5 |
| Participant Notices..... | 6 |
| Summary of Conference Activities..... | 7 |
| Continuing Education Units (CEUs)..... | 8 |
| Antonia Brancia Maxon Award for EHDI Excellence | 9 |
| Plenary Session Presentations | 10–11 |
| Conference Agenda | 12–20 |
| Topical Session 1 (Monday morning)..... | 12–13 |
| Topical Session 2 (Monday afternoon) | 13–15 |
| Topical Session 3 (Monday afternoon)..... | 15 |
| Topical Session 4 (Tuesday morning) | 16–17 |
| Topical Session 5 (Tuesday morning) | 17–18 |
| Topical Session 6 (Tuesday afternoon)..... | 18–19 |
| Topical Session 7 (Tuesday afternoon)..... | 20 |
| Sub-Group Meetings Taking Place During the Conference..... | 21 |
| Informal Networking / Socializing Opportunities | 21 |
| Poster Presentations | 22–23 |
| Exhibitors..... | 24 |
| State Team Meetings..... | 25–28 |
| Description..... | 25 |
| Team Up Form..... | 26–27 |
| State Action Plan (Example Form) | 28 |
| Session Notes and Applications..... | 29–32 |
| Presenter Index..... | 33–36 |
| Notes..... | 37–39 |
| Exhibit & Poster Layout | 40 |
| Hotel Layout..... | Back Inside Cover |
| Agenda at a Glance..... | Back Outside Cover |

EHDI 
CONFERENCE
2009

EHDI Conference 2009

ABOUT THE EHDI CONFERENCE

ABOUT THE EHDI CONFERENCE

In its 8th year, the Early Hearing Detection and Intervention (EHDI) Conference has built a strong reputation for bringing together a wide variety of attendees including those who:

- work in state EHDI programs;
- assist in EHDI efforts on the federal level;
- provide screening, diagnostic and early intervention support at the state/ local level to young children with hearing loss and their families;
- champion Medical Home activities within each state;
- are family members of children with hearing loss;
- are deaf or hard-of-hearing adults who are helping to expand opportunities for young children with hearing loss;
- are academicians (faculty and students) engaged in education or research related to EHDI.

The conference combines lectures, panel discussions, and strategic planning sessions to allow you the opportunity to interact with the faculty and your colleagues in solving the problems you encounter related to EHDI in daily practice and in policy and programmatic activities.

LEARNING OBJECTIVES FOR CONFERENCE PARTICIPANTS

- Identify and promote knowledge and awareness of successful strategies for implementing comprehensive state-based Early Hearing Detection and Intervention (EHDI) programs that include screening, audiologic diagnostic evaluation, early intervention, medical home, reporting, tracking, surveillance, loss to follow-up issues, data integration, and other related surveillance components.
- Interpret and describe current research and research methods related to EHDI.
- Examine cultural competence of providers and assess their ability to work with children who have a hearing loss, their families, and communities.
- Discuss the importance of enhancing and creating new and ongoing working relationships among federal agencies, non-profit organizations, state health departments and educational agencies, advocacy groups, families, and professionals.

CONFERENCE HISTORY



- 1st Annual: February 11–13, 2002
- 2nd Annual: February 24–26, 2003
- 3rd Annual: February 18–21, 2004
- 4th Annual: March 3–4, 2005
- 5th Annual: February 2–3, 2006
- 6th Annual: March 26–27, 2007
- 7th Annual: February 25–26, 2008
- 8th Annual: March 9–10, 2009

- Tysons Corner Marriott Hotel, Vienna Virginia
- Renaissance Atlanta Hotel Downtown, Atlanta, Georgia
- Renaissance Mayflower Hotel, Washington, D.C.
- Renaissance Atlanta Hotel Downtown, Atlanta, Georgia
- Renaissance Washington D.C. Hotel, Washington, D.C.
- Salt Lake City Marriott Downtown, Salt Lake City, Utah
- Astor Crowne Plaza Hotel, New Orleans, Louisiana
- InterContinental Dallas Hotel, Addison, Texas

EHDI Conference 2009

ACKNOWLEDGMENTS

The conference organizers recognize and thank the members of the 2009 EHDI Conference Planning Committee for their hard work and dedication to creating an engaging and productive conference.

CO-SPONSOR REPRESENTATIVES

| | |
|-------------------|--|
| Michelle Esquivel | American Academy of Pediatrics (AAP) |
| John Eichwald | Centers for Disease Control and Prevention (CDC) Department of Health and Human Services |
| Irene Forsman | Health Resources and Services Administration (HRSA) Department of Health and Human Services |
| Karl White | National Center for Hearing Assessment and Management (NCHAM) Utah State University |

PLANNING COMMITTEE MEMBERS

| | |
|-----------------------|---|
| Karen Clark | Callier Center for Communication Disorders, University of Texas at Dallas |
| Alicia Favila | Texas Deaf and Hard-of-Hearing Services |
| Jeff Hoffman | Nebraska Department of Health & Human Services |
| Vicki Hunting | Iowa Hands & Voices |
| Irene Leigh | Department of Psychology, Gallaudet University |
| Candace Lindow-Davies | Family Support Coordinator, MN Hands & Voices, Lifetrack Resources |
| Anne McNally | John Tracy Clinic |
| Nancy Pajak | Wyoming State EHDI Coordinator |
| Lakshmy Rajagopalan | Neonatologist |

CONFERENCE STAFF

| | |
|-----------------------|---|
| Jamie Elliott-Cousins | Consultant, NCHAM |
| Casey Judd | Utah State University Conference Services |
| Lisa Anderson | Utah State University Conference Services |

Special Thanks

We would also like to thank the Abstract Review Committee for lending time and expertise, Room Monitors for helping the conference run smoothly, and all of the contractors whose behind the scenes magic allows us to enjoy and get the most out of the conference.



EHDI Conference 2009

PARTICIPANT NOTICES

CONFERENCE REGISTRATION (CRYSTAL BALLROOM FOYER)

| | | |
|--------------------------|------------------|--|
| Sunday, March 8 | 7:15 AM–9:00 AM | The conference registration desk will be managed by Utah State University Conference Services during the hours listed to the right. Should you need assistance with any aspect of the conference, please feel free to contact any of the conference staff there. |
| Sunday, March 8 | 6:00 PM–8:00 PM | |
| Monday, March 9 | 7:00 AM–3:30 PM | |
| Tuesday, March 10 | 7:15 AM–12:00 PM | |

MESSAGE BOARD (CRYSTAL BALLROOM FOYER)

A message board will be provided near the conference registration desk to post any last minute schedule changes or important conference announcements. Participants may also use the board to communicate with other participants. Check the board often for messages and updates.

SESSION HANDOUTS

Presenters were asked to bring copies of their session handouts. If handouts were not provided, please contact the session presenter directly, or look online, some presenters uploaded their handouts to www.ehdiconference.org/grid.cfm.

NAME TAGS AND RIBBONS

Your conference name tag will admit you to all conference sessions and activities. To assist you in networking with other participants and conference staff, color coded ribbons have been provided as follows:

| | | | |
|-------------------------|--------------|---------------------|--------|
| Staff | Jewel Blue | Room Monitor | Blue |
| Speaker | Black | Concierge | Jade |
| Plenary Speaker | Forest Green | I Can Sign | Violet |
| Poster Presenter | Cornflower | Parent | Mocha |
| Exhibitor | Red | MCH Student | Orange |
| | | LEND Trainee | Orange |

SPEAKER READY ROOM (STEUBEN ROOM, 2ND FLOOR)

| | | |
|--------------------------|-----------------|---|
| Sunday, March 8 | 6:00 PM–8:00 PM | Presenters should take their PowerPoint Presentations to the Speaker Ready Room during these hours to have presentations pre-loaded to their session room. Please do this as soon as possible after your arrival in Dallas. |
| Monday, March 9 | 7:30 AM–5:30 PM | |
| Tuesday, March 10 | 7:15 AM–3:15 PM | |

CELL PHONES

Please turn off all cell phones and alarm systems during all conference sessions so as not to distract presenters or other participants. We thank you for your cooperation.

LUGGAGE STORAGE ON TUESDAY

For those who will be checking out of their hotel rooms Tuesday morning, a luggage storage area will be provided from 7:15 AM–5:30 PM.

SMOKING

We appreciate your consideration of others by smoking only outdoors. Thank you.

EVALUATION FORMS

The conference co-sponsors wish to make the EHDI Conference as beneficial as possible to the participants. You are encouraged to complete evaluations for each of the sessions you attend, including posters sessions. Your responses will help the Planning Committee improve activities for future EHDI Conferences. We greatly appreciate your time and feedback!

Overall Conference Evaluation – You will find this evaluation form in your conference packet.

Breakout Session Evaluation – At each session you attend, you will be given an evaluation form to evaluate that session. Return these forms to the room monitor upon leaving the session.

Poster Evaluation – To help ensure quality posters at the EHDI Conference, please complete an evaluation form for each poster you visit. Forms will be available throughout the Poster Hall.

EHDI Conference 2009

CONFERENCE ACTIVITIES

RECEPTION & ENTERTAINMENT – Cowboy Poetry and Singing by Dr. Albert Mehl

Stroll the Exhibit Hall and catch up with colleagues and friends during the Reception from 5:45 PM–7:30 PM on Monday, March 9 in Garden Court. The Reception includes light fare.

At 6:30 PM mosey across the hall for Texas-style entertainment that you won't want to miss! Showtime for Al Mehl's Cowboy Poetry and Singing is 6:30 PM–7:30 PM on Monday, March 9 in the Malachite Showroom (ASL Interpreting provided).

STATE TEAM MEETINGS (LOCATIONS FOR EACH STATE ARE LISTED IN YOUR PACKET MATERIALS)

These meetings provide a structure and support for attendees at the conference who are from the same state to work together to improve their state EHDI program.

| | |
|--------------------------|------------------|
| Monday, March 9 | 9:45 AM–10:35 AM |
| Tuesday, March 10 | 7:30 AM–8:30 AM |

POSTER SESSIONS WITH PRESENTERS (GARDEN COURT, 1ST FLOOR)

Posters will be available for viewing throughout the conference, and poster presenters will be on hand during the poster session times listed below.

| | | |
|---|---|-------------------|
| Poster Setup | Sunday, March 8 | 6:00 PM–8:00 PM |
| | Monday, March 9 | 7:00 AM–8:00 AM |
| <i>All posters are to be mounted by 8:00 AM on Monday morning</i> | | |
| Poster Session 1 | Monday, March 9 | 12:45 PM–1:45 PM |
| | Poster Session 2 | Tuesday, March 10 |
| Poster Take Down | Tuesday, March 10 | 2:00PM–4:30 PM |
| | <i>All posters are to be removed by Tuesday at 4:30 PM. Any materials left after this time will be discarded.</i> | |

PRESENTATION OF POSTER AWARDS

A panel of judges will evaluate all of the posters based on the content and presentation. Blue ribbons will designate the top posters from among the 8 conference tracks and recognize posters that convey information in a compelling way.

| | | |
|--------------------------|---------|------------------|
| Tuesday, March 10 | 9:45 AM | Crystal Ballroom |
|--------------------------|---------|------------------|

ANTONIA BRANCIA MAXON AWARD FOR EHDI EXCELLENCE PRESENTATION

Join us in honoring the 2009 recipient(s) and celebrating their contribution(s) to EHDI.

| | | |
|------------------------|---------|------------------|
| Monday, March 9 | 5:10 PM | Crystal Ballroom |
|------------------------|---------|------------------|

EXHIBITOR HOURS (GARDEN COURT, 1ST FLOOR)

| | |
|--------------------------|-----------------|
| Monday, March 9 | 7:30 AM–7:30 PM |
| Tuesday, March 10 | 7:30 AM–2:30 PM |

ASL FOR EVERYBODY – INFORMAL NETWORKING (CRYSTAL BALLROOM FOYER)

Are you curious about American Sign Language? Want to practice your skills? Then gather at the 'ASL for Everybody' table in the Crystal Foyer, where experienced signers and facilitators will be "on hand" to encourage you in your efforts! Be prepared to socialize, ask any questions you have, and most of all, to have fun!

Look for the "I Can Sign" ribbon on participant name tags.

THE PARENT PLACE – INFORMAL NETWORKING (CRYSTAL BALLROOM FOYER)

Come to The Parent Place throughout the conference to meet and mingle with other parents and family members of children who are deaf or hard-of-hearing.

Look for the "Parent" ribbon on participant name tags.

EHDI Conference 2009

CONTINUING EDUCATION UNITS (CEUs)

AMERICAN ACADEMY OF AUDIOLOGY

Participants seeking American Academy of Audiology (AAA) CEUs will find the AAA Attendance Form and the Learner Assessment Form under the CEU Tab in their conference packet.

Participants seeking CEU credits from the AAA MUST complete and submit all of the following before leaving the conference:

- Fill out evaluations for the topical and poster sessions that you attend
 - Write your name on the session evaluation for each session you attend
 - Mark the AAA box at the top of each session evaluation you complete
 - Turn in each evaluation to the room monitor at the end of each session
- Complete the CEU Attendance Form
- Complete the Learner Assessment
- Turn in your completed: (1) Attendance Form and (2) Learner Assessment to the conference registration desk before you leave the conference

If we do not receive your forms by March 10th at the end of the conference, you will need to submit your forms directly to AAA to receive CEUs.

The National Center for Hearing Assessment and Management (NCHAM) has been approved by the American Academy of Audiology to offer Academy CEUs for the 2009 EHDI Conference. The program may be worth a maximum of 1.6 CEUs (this includes the pre-conference ANSD session), if approved. Instructions and the required paperwork will be available in the CEU Tab of your conference packet. Academy approval of this continuing education activity does not imply endorsement of course content, specific products, or clinical procedures.



Application instructions, the CEU Attendance Form, and the Learner Assessment are located in your conference packet.

AMERICAN SPEECH-LANGUAGE-HEARING ASSOCIATION

Participants seeking American Speech-Language-Hearing Association (ASHA) CEUs will find the ASHA CEU Participant Form in their registration packets. It is necessary to complete this form and return it to the conference registration table at the end of the conference on Tuesday, March 10.

Variable credit will be awarded depending upon the activities attended. Please see ASHA instruction page in the conference packet for the breakdown of contact hours. When filling out your Participant Form, please write the total number of contact hours you earned in the upper right-hand corner of the form. This number will be converted to CEUs for you.

Utah State University is approved by the Continuing Education Board of the American-Speech-Language-Hearing Association (ASHA) to provide continuing education activities in speech-language pathology and audiology. This program is offered for up to 1.3 CEUs (intermediate level; professional area). ASHA CE Provider approval does not imply endorsement of course content, specific products, or clinical procedures.



Application instructions and the CEU Participant Form are located in your conference packet.

EHDI Conference 2009

ANTONIA BRANCIA MAXON AWARD FOR EHDI EXCELLENCE

Presentation of the Antonia Brancia Maxon Award for EHDI Excellence will be on:
Monday, March 9, 2009 • 5:10 PM • Crystal Ballroom

The Antonia Brancia Maxon Award for EHDI Excellence honors the career achievements of Dr. Antonia Brancia Maxon to promote effective EHDI programs for all newborns, infants, and young children. Dr. Maxon was a visionary in EHDI programs, beginning with her leadership in the Rhode Island Hearing Assessment Project in the late 1980's. She was one of the first to recognize the feasibility and value of universal newborn hearing screening and was a tireless advocate for connecting screening programs with timely and appropriate diagnosis and early intervention.

Her extensive contributions to creating excellent EHDI programs were abruptly ended by a tragic automobile accident in May of 2007. In memory of her contributions, an Award for EHDI Excellence is presented at the annual EHDI Conference to honor an individual or group of people who have made a noteworthy accomplishment that contributed to achieving excellence in EHDI programs nationally or in a particular state or region of the country.

JUDITH GRAVEL

The EHDI community lost one of its most admired, loved, and effective proponents on the morning of December 31, 2008 when Judy Gravel passed away after a long battle with cancer. She will be remembered as a pioneer who changed the world for children with hearing loss and their families.

At the time of the award she was serving as Director of the Center for Childhood Communication at Children's Hospital of Philadelphia where she also held the William P. Potsic Chair in Pediatric Otolaryngology and Childhood Communication.

Over the years Judy made innumerable contributions to EHDI-related professional and scientific organizations at the state, national, and international levels. In fact, it is impossible to pick up an article or book chapter on pediatric audiology without seeing multiple references to her work. She always had a keen sense for what was timely and important. Moreover, she combined creativity and problem solving ability with a positive attitude and a steadfast determination to see a project through to successful completion. It is not surprising that Judy participated in nearly every important pediatric audiology task force and working group for the past 30 years. For many years she was a member of the Joint Committee on Infant Hearing, which she chaired from 2003-2005. Members of that committee remember her as a master of consensus building who was able to achieve cooperation and compromise without sacrificing her ideals or core principles. Those who have worked with Judy in any capacity knew her to be a person of exceptional honesty, civility, and personal integrity. She will be missed greatly by the EHDI community, but her contributions will continue to improve the lives of children with hearing loss and their families for many years to come.

MARY HARTNETT

Mary Hartnett is the Executive Director for the Minnesota Commission Serving Deaf and Hard-of-Hearing People (MCDHH). Under her leadership, the 2007 legislative session was a historic year for Minnesota EHDI policy with five EHDI related bills being passed:

1. Newborn Hearing Screening Mandate – \$20 increase in the bloodspot fee which will provide \$1.3 million a year to ensure all babies are screened for hearing loss
2. Parent Guides for Families with Hearing Loss – \$100,000 a year to train guides to provide family support and unbiased information about language, medical, and educational choices
3. Hearing Aid Loaner Bank – \$70,000 a year for a program director
4. Deaf and Hard-of-Hearing Mentors – \$40,000 per year to teach sign language in the home to families of children with hearing loss
5. Statewide Education EHDI Coordinator – \$40,000 per year to support evidence-based early intervention practices for infants with hearing loss and provide training, outreach, and use of technology to increase consistency in statewide service provision

Minnesota House Minority Leader Marty Seifert summed Mary's work by saying "Mary is a tenacious advocate who believes in the right cause with passion. There is no way that these initiatives would have passed without her direct involvement in moving them forward."

2008 Winners
(Excerpts from 2008 Nomination Letters)

OPENING PLENARY SESSION

MONDAY, MARCH 9, 8:15 AM-9:15 AM

Genetic Screening for Usher Syndrome

Usher syndrome (US) is a major cause of combined deaf/blindness. The hearing loss is usually congenital and either profound or moderate. The retinitis pigmentosa (RP) is a progressive loss of vision manifested first by nightblindness and tunnel vision, and, in many cases, blindness as an adult. Early diagnosis of US promises many benefits for early treatment, rehabilitation and education. However, traditional diagnostic tests like the electroretinogram (ERG) are difficult and expensive to perform on young children. An inexpensive Usher screening test has been developed that is directed against all recurring US mutations. US screening is now an inexpensive and feasible mechanism for screening large numbers of children at a reasonable cost. More than 8% of children with hearing loss may have US and will develop serious vision problems; newborn hearing screening programs routinely identify very young children at high risk for US. The integration of US screening along with screening for other genetic causes of hearing loss into newborn hearing programs has great potential for benefit. An US screening program will lay the foundation for future clinical trials. Several reasonable hypotheses about treatment to retard the development of the RP have been proposed and it is sensible to believe that early intervention would result in the greatest benefit to the US child and family.

William J. Kimberling, PhD, FACMG

Director of the National Center for the Study & Treatment of Usher Syndrome, Boys Town Hospital
 Professor of Biomedical Sciences, Creighton Medical School

Dr. William Kimberling is a medical geneticist with an interest in neurosensory disorders, primarily those that affect both hearing and vision. He graduated from the Indiana University School of Medicine and held a postdoctoral fellowship at the University of Oregon Medical School. After 5 years at the University of Colorado Medical School, he moved to Boys Town National Research Hospital where his research on Usher syndrome began. He, in collaboration with other researchers, world wide, has helped to identify and characterize several of the genes that cause Usher syndrome. He is now a Professor at the University of Iowa Medical School in the departments of Ophthalmology, and Otolaryngology where he continues to research deaf/blindness, specifically developing early detection strategies that can be widely and inexpensively used by schools and newborn hearing screening programs.

Joe, Lita, and David Salazar

Joe and Lita Salazar are from San Antonio, Texas where they own and operate a McDonald's franchise. They are the parents of David, who has Usher syndrome, a devastating genetic disorder that destroys the senses of their hearing and then slowly takes away their vision due to retinitis pigmentosa as they approach adulthood. Usher syndrome is the leading cause of combined deaf blindness in the United States. Joe and Lita have actively supported programs which do research to prevent and support people with Usher syndrome.

PLENARY SESSION 2

MONDAY, MARCH 9, 4:10 PM-5:10 PM

Aminoglycoside-induced Ototoxicity in Neonates

In neonatal intensive care units, aminoglycoside antibiotics are routinely administered to new admissions to control bacterial sepsis. Neonates that receive aminoglycosides for more than seven days, or concurrently receive mechanical ventilation for more than 4 days are far more likely to fail a new-born hearing screening test.

Hearing loss carries a socio-economic cost of over 1 million dollars (in year 2000\$) over the life-time of each child with pre-lingual onset of hearing loss. Thus, there is considerable pressure to identify the mechanisms involved in and ultimately to prevent drug-induced hearing loss. This presentation will discuss data from the neonatal clinic and present hypotheses regarding the biological mechanisms involved in aminoglycoside ototoxicity.

Peter Steyger, PhD

Associate Professor of Otolaryngology, Oregon Health & Sciences University

Peter Steyger's severe hearing loss (85-100 dB) originated with streptomycin treatment at 14 months of age during a bout of cerebral meningitis. With hearing aids he was able to decipher sounds and, after much speech training, to speak clearly. Following a mainstreamed English grammar school education, Peter entered university and embarked upon an academic research career that has led to his current research into the mechanisms of drug-induced deafness. Peter received a cochlear implant in 2006 which improved his auditory scene analysis tremendously, enhancing his social integration. He is currently Associate Professor of Otolaryngology at Oregon Health and Science University.

EHDI Conference 2009

PLENARY SESSION PRESENTATIONS

PLENARY SESSION 3

TUESDAY, MARCH 10, 8:45 AM–9:45 AM

Achieving Cultural and Linguistic Competence

Cultural and linguistic competence is widely recognized by policy makers, researchers, educators, and providers as fundamental aspects of quality in health and human services, particularly for diverse patient populations. Cultural and linguistic competence is viewed as an essential approach for reducing disparities by improving access, utilization, and service delivery to improve the outcomes and well-being of children, families, and the communities in which they live. This plenary session will: (a) describe conceptual frameworks for advancing cultural and linguistic competence at both the organizational and individual levels, within programs concerned within early hearing detection and intervention; and (b) offer a parent's perspective on the role of culture in services and support for a child with hearing loss.

Tawara D. Goode, MA

Director, National Center for Cultural Competence

Associate Director, Georgetown University Center for Child & Human Development, University Center for Excellence in Developmental Disabilities
Assistant Professor, Department of Pediatrics, Georgetown University Medical Center

Ms. Goode is an Assistant Professor in the Department of Pediatrics at Georgetown University Medical Center in Washington, D.C. She has been on the faculty of the Georgetown University Center for Child and Human Development (GUCCHD), for the past 30 years and has served in many capacities. Ms. Goode has degrees in Early Childhood, Special Education and Human Development and over 32 years of experience in the field.

The National Center for Cultural Competence has been in existence for the past 13 years, during which Ms. Goode was the director for 11 years. The mission of the National Center for Cultural Competence is to increase the capacity of health care and mental health programs to design, implement and evaluate culturally and linguistically competent service delivery systems. Ms. Goode has been actively involved in the development and implementation of programs and initiatives in the area of cultural and linguistic competence at local, national and international levels. These efforts address the needs of diverse audiences, including health care, mental health, social services, early childhood and special education, community/advocacy organizations, professional societies/organizations, and institutions of higher education.

CLOSING PLENARY SESSION

TUESDAY, MARCH 10, 3:55 PM–4:45 PM

Auditory Neuropathy Spectrum Disorder (ANSD)

In June 2008, a panel of experts met at the international Newborn Hearing Screening (NHS) Conference in Lake Como, Italy to discuss and debate issues relevant to identification and management of auditory neuropathy in infants and young children. This meeting, sponsored by the Bill Daniels Center for Children's Hearing, The Children's Hospital (Denver, Colorado), resulted in guidelines for screening, diagnosis, and early intervention for infants with this diagnosis. In this plenary session, speakers will describe the complex nature of the disorder and identify the challenges of screening newborns for auditory neuropathy. A brief overview of the guidelines generated following the NHS2008 Conference will be presented.

Kai Uus, MD, PhD

Lecturer in Audiology, Psychology Department, University of Manchester, England

Kai Uus, MD, PhD has been a lecturer in the Audiology and Deafness Group within the School of Psychological Sciences, Faculty of Medical and Human Sciences at the University of Manchester, England since July 2004. Dr. Uus is a Pediatrician with strong research interests in the area of pediatric audiology including, the epidemiology of childhood hearing loss, newborn hearing screening, auditory neuropathy spectrum disorder, auditory maturation, and auditory function in demyelinating conditions. She is a member of the Institute of Health Sciences (IHS) Child Health Research Network.

Yvonne Sininger, PhD

Professor in the Division of Head & Neck Surgery, David Geffen School of Medicine, University of California, Los Angeles

Yvonne Sininger, PhD received her Bachelor's degree in Speech and Hearing and Master's degree in Audiology from Indiana University. She obtained her doctorate in Speech and Hearing Science from the University of California, Santa Barbara and San Francisco. Dr. Sininger started her career and developed an interest in infants and children as a Clinical Audiologist for the University of Cincinnati Medical Center. After completing her PhD, she moved to Los Angeles as a Post-doctoral fellow in Electrophysiology at the House Ear Institute and later became the Director of the Children's Auditory Research and Evaluation Center. She is currently the Director of Newborn Hearing Screening and a visiting Professor of Head & Neck Surgery at the University of California, Los Angeles. Dr. Sininger's research interests are in electrophysiologic measures of hearing and auditory system development.

Deborah Hayes, PhD

Professor of Rehabilitation Medicine and Pediatrics, University of Colorado Denver School of Medicine

Deborah Hayes, PhD holds the Kelley Family/Schlessman Family Scottish Rite Masons Chair in Childhood Language Disorders in the Department of Audiology, Speech Pathology, and Learning Services at The Children's Hospital in Denver, Colorado. She is also Professor of Physical Medicine and Rehabilitation at the University of Colorado School of Medicine, and Professor of Speech, Language, and Hearing Sciences with the University of Colorado at Boulder. Dr. Hayes has worked extensively in the area of newborn hearing screening, diagnosis of hearing loss in infants and young children, and amplification and intervention for babies and young children with hearing loss. With colleagues at the Bill Daniels Center for Children's Hearing at The Children's Hospital, Dr. Hayes participated in development of a model program of early identification and intervention for children who are deaf or hard-of-hearing. Dr. Hayes is the author of more than 30 journal articles, book chapters, and proceedings. With her colleague, Dr. Jerry Northern, she is the co-author of the textbook *Infants and Hearing*.

EHDI Conference 2009

AGENDA • SATURDAY-MONDAY

Saturday, March 7, 2009

| | | |
|-----------------|---|----------------------------|
| 3:00 PM–5:00 PM | DSHPSHWA Board Meeting <i>(By Invitation)</i> | Mayfair <i>(1st Floor)</i> |
| 6:30 PM–8:30 PM | DSHPSHWA Reception <i>(By Invitation)</i> | Garden Court III |

Sunday, March 8, 2009

| | | |
|-----------------|--|--|
| 7:30 AM–9:00 AM | Registration Open | Crystal Ballroom Foyer |
| 8:15 AM–5:30 PM | Pre-Conference Workshop: Identification and Management of Infants and Young Children with Auditory Neuropathy Spectrum Disorder (ANSD) | Crystal III |
| 8:30 AM–6:00 PM | DSHPSHWA Meeting <i>(will be attending the Medical Home Workshop 3:00 PM–6:00 PM)</i> | Crystal I |
| 3:00 PM–6:00 PM | Pre-Conference Workshop: Medical Home & EHDI *Continuing Medical Education Provided | Crystal II |
| 6:00 PM–8:00 PM | Registration Open | Crystal Ballroom Foyer |
| 6:00 PM–8:00 PM | Exhibit Set-up & Poster Set-up | Garden Court |
| 6:00 PM–8:00 PM | Speaker Ready Room Open | Steuben – 2nd Floor |
| 7:00 PM–8:00 PM | AAP New Chapter Champions Orientation <i>(By Invitation)</i> | Crystal II |
| 7:00 PM–9:30 PM | MCH & LEND Graduate Student Dinner <i>(By Invitation)</i> | La Corniche <i>(Inside the Monte Carlo Restaurant, 1st floor)</i> |

Monday, March 9, 2009

| | | |
|-------------------|---|---|
| 7:00 AM–3:30 PM | Registration Open | Crystal Ballroom Foyer |
| 7:30 AM–5:30 PM | Speaker Ready Room Open | Steuben |
| 7:30 AM–8:15 AM | Continental Breakfast | Garden Court |
| 7:30 AM–7:30 PM | Exhibits Open | Garden Court |
| 8:15 AM–9:15 AM | Opening Plenary Session *Continuing Medical Education Provided | Crystal Ballroom |
| | Genetic Screening for Usher Syndrome William J. Kimberling, PhD, FACMG • Joe, Lita, and David Salazar Moderator: Karl R. White, PhD | |
| 9:15 AM–9:25 AM | Introduction to the State Team Meetings | |
| 9:25 AM–9:45 AM | Refreshment Break | |
| 9:45 AM–10:35 AM | State Team Meetings I | <i>(Locations are listed on the handout in your conference materials)</i> |
| 10:55 AM–11:55 AM | Topical Session I | <i>*All presentations are 30 minutes unless otherwise specified.</i> |

TOPICAL SESSION I

Room - Crystal I

Interdisciplinary Training, Research and Service Universities Supporting EHDI Efforts
Presented by George Jesien, Anne Marie Tharpe, Judith Holt, Richard Harward, Allison Sedey
60 minutes

Room - Crystal II

How Does Early Identification of Hearing Loss Affect Speech-Language Development?
Presented by Marcia Foster, Jessie Ritter

Influence of Early Amplification and Other Factors on Auditory-Based Outcomes
Presented by Yvonne Sininger

Room - Crystal III

Using The Listening Room to Create Listening and Language Opportunities in the Child's Home Environment
Presented by Carissa Moeggenberg

Coaching Parents: Working with Families to Enhance Communication
Presented by Betsy Brooks

Room - Crystal VI

Arizona Hands & Voices Fall Expo
Presented by Keith Garrett, Lylis Olsen

Building Collaborative Partnerships Across the EHDI Continuum
Presented by Alicia Favila, Eugenia Dunham, Christine Watkins, Karen Clark, Lisa Crawford

EHDI Conference 2009

AGENDA • MONDAY

Monday, March 9, 2009

10:55 AM–11:55 AM

Topical Session 1 (Continued)

**All presentations are 30 minutes unless otherwise specified.*

TOPICAL SESSION 1

Room - Crystal VII

What Can We Do with Babies? Beyond Peek-a-Boo and Patty Cake
Presented by Becky Cleme, Sarah Thomas

Small Talk – Developing, Implementing and Facilitating a Parent-Toddler Group
Presented by Tamara Elder, Heather Kasulis

Room - Crystal VIII

Update on Joint Committee on Infant Hearing (JCIH) Activities
Presented by Judy Widen, Brandt Culpepper, Alison Grimes

Assessing and Encouraging Compliance with 2007 JCIH Recommendations
Presented by Kathryn Aveni

Room - Laliqie I

Powerful Strategies in Motivating Hospitals to Improve Loss to Follow-up
Presented by Randi Winston, Sondi Aponte, Valerie Odeh

Update: The Baby Sound Program - A Model Program for Infant Hearing Screening in the Medical Home
Presented by Sandra Mintz, Parul Bhatia

Room - Laliqie II

Deaf & Hearing Siblings: Parent Perspectives on Keeping Everybody Sane
Presented by Leeanne Seaver

Room - Spectrum

Wanted: Pediatric Audiologists!
Presented by Patti Martin, Nannette Nicholson, Shawnee Wong

The Changing Role of Audiologists and other EHDI Professionals in Early Childhood Hearing Screening
Presented by William Eiserman, Terry Foust, Lenore Shisler, Jan Buhrmann

Room - Waterford

Deaf-Hearing Partnerships: We're in This Together
Presented by Barbara Raimondo, Beth Benedict

Working with Families: Emerging Trends
Presented by Debbie White

Room - Colonnade

Including High Frequency (1000 Hz) Acoustic Stapedial Reflexes in UNHS: Pros and Cons
Presented by Samantha Kleindienst, Wendy Hanks

Conductive Hearing Loss in Young Children: Options and Opportunities
Presented by Donna Sorkin, Jennifer Lake

Room - Baccarat

We Just Happen to Be Deaf
Presented by Anne McNally
60 minutes

11:55 AM–1:00 PM

Lunch Provided in Exhibit Hall

Garden Court

12:45 PM–1:45 PM

Poster Session #1 • Exhibits Open

Garden Court

12:15 PM–1:15 PM

Roundtable on Cultural Competence

Mayfair Room (1st floor)

Pick up your boxed lunch in the Exhibit Hall and join us for a roundtable discussion over lunch with Tawara Goode, Director of the National Center on Cultural Competence.

2:00 PM–3:00 PM

Topical Session 2

**All presentations are 30 minutes unless otherwise specified.*

TOPICAL SESSION 2

Room - Crystal I

Hearing Aid Fitting: New Technologies Improve Audibility
Presented by Patricia Roush
60 minutes

Room - Crystal II

Using Tele-Health and Distance Learning to Support EHDI Programs
Presented by Sandra Gabbard, Nanette Thompson, Dinah Beams

Tele-health Applications in a Provincial EHDI Program
Presented by William Campbell

AGENDA • MONDAY

Monday, March 9, 2009

2:00 PM–3:00 PM

Topical Session 2 (Continued)

**All presentations are 30 minutes unless otherwise specified.*

TOPICAL SESSION 2

Room - Crystal III

Gathering the Right Tools - Personalities within the Early Intervention Team
Presented by Susan Hagarty

Partnering for Success - Enhancing Capacity in Early Intervention
Presented by Arthur Florio, Mary King-Maxey, Susan Kershman

Room - Crystal VI

Siblings, Family Support, Parent Involvement, Social/Emotional Issues
Presented by Leeanne Seaver
60 minutes

Room - Crystal VII

Listening and Spoken Language Specialists
Presented by Henry Becker, Judy Harrison, Alexander T. Graham

Listening and Spoken Language as Building Blocks for Later Literacy
Presented by Mary Ellen Nevins

Room - Crystal VIII

Quality Control in Early Intervention
Presented by Claudine Storbeck, Paula Pittman

Assessing the 'Quality' of Quality Early Intervention
Presented by Alys Young, Maria Gascon-Ramos, Wendy McCracken, Gwen Carr, Emily Pattison

Room - Lalique I

Parents Informing Practice
Presented by Terrell Clark, Denise Fournier Eng, Amy Szarkowski, Charlotte Mullen

Empower Parents Empower Children
Presented by Keith Garrett

Room - Lalique II

Bilingualism: A Natural Approach to Language Acquisition
Presented by Tamara Hossler, Erica Hossler, Tara Holcomb

An ASL/English Bilingual Parent-Infant Program at the Laurent Clerc National Deaf Education Center
Presented by Debra Nussbaum, Debra Cushner

Room - Spectrum

Achieving 'Best Practices' in Early Intervention
Presented by Todd Houston, Karen Clark, Patti Martin

Capitalizing on the 'I' in EHDI!
Presented by Patti Martin, Karen Clark, Gayla Hutsell, Todd Houston

Room - Waterford

Meet the Parents!
Presented by Becky Clem, Sarah Thomas

Optimizing Early Identification with Effective Strategies for Infants
Presented by Karen Cassidy, Gloria Menezes-Furtado, Sarah Wainscott

Room - Colonnade

Development of the Costa Rican EHDI Program
Presented by Karen Munoz, Sebastian Malek, Louis Cooper, Karl White

Pilot Project to Start National Program for Prevention and Control of Deafness in India
Presented by Raj Desai

Room - Baccarat

Integrating Data for Care Management
Presented by Mary Catherine Hess, OZ Systems (EXHIBITOR)

Enabling Electronic Hearing Surveillance and Case Management
Presented by Joy Alamgir, Consilience Software (EXHIBITOR)

EHDI Conference 2009

AGENDA • MONDAY-TUESDAY

Monday, March 9, 2009

3:00 PM-3:20 PM
3:20 PM-3:50 PM

Refreshment Break
Topical Session 3

**All presentations are 30 minutes unless otherwise specified.*

TOPICAL SESSION 3

Room - Crystal I

All You Ever Wanted to Know About Cultural Differences but Were Afraid to Ask
Presented by Tawara Goode
60 minutes

Room - Crystal II

Improving Screening Practices in Primary Healthcare Settings Using Combined OAE/Tympanometry Screening
Presented by Randi Winston, Bradley Golner

Room - Crystal III

Oklahoma Follow-up: Changing 1-3-6 Months into 1-3-6 WEEKS
Presented by Patricia Burk, Joan Burns, Deborah Earley, Meredith Gatzemeyer

Room - Crystal VI

Today's Issues in Advocacy for Deaf and Hard of Hearing Persons
Presented by Barbara Raimondo

Room - Crystal VII

Examining Language Outcomes at the National Level
Presented by Allison Sedey, Elizabeth Seeliger

Room - Crystal VIII

Sound Beginnings: An Integrated Model for Educational & Clinical Services
Presented by Todd Houston

Room - Lalique I

Opinions vs. Evidence: What's the Difference? What Kind of Data do You Need to Make Decisions About Your Child's Education and Influence EHDI and Education Policy?
Presented by Brenda Schick, Mary Hartnett

Room - Lalique II

Congenital CMV and Hearing Loss: New Developments
Presented by Scott Grosse, Danielle Ross

Room - Spectrum

Integration of Intervention Services in the British Columbia Early Hearing Program
Presented by Susan Lane, Ann Marie Newroth

Room - Waterford

Ethical Bias: Addressing Professional Obligations when Communicating with Families
Presented by Lisa Crawford

Room - Colonnade

Family-Centered Intervention for Non-English Speaking Families
Presented by Gloria Menezes-Furtado, Karen Cassidy, Sarah Wainscott

4:10 PM-5:10 PM

Plenary Session II **Continuing Medical Education Provided*

Crystal Ballroom

Aminoglycoside-induced Ototoxicity in Neonates

Peter Steyger, PhD

Moderator: Albert Mehl, MD, FAAP

Presentation of the Antonia Brancia Maxon Award for EHDI Excellence

Crystal Ballroom

5:10 PM-5:20 PM

Reception

Garden Court

5:45 PM-7:30 PM

Entertainment: Cowboy Poetry by Dr. Albert Mehl

Malachite Showroom (1st Floor)

6:30 PM-7:30 PM

AAP Chapter Champions Dinner *(By Invitation)*

Off-site Restaurant

7:30 PM-9:30 PM

Tuesday, March 10, 2009

7:15 AM-8:30 AM

Continental Breakfast

Garden Court & Crystal Ballroom Foyer

7:15 AM-12:00 PM

Registration Open

Crystal Ballroom Foyer

7:30 AM-2:30 PM

Exhibits Open

Garden Court

7:30 AM-8:30 AM

State Team Meetings II *(Locations are listed on the handout in your conference materials)*

AGENDA • MONDAY-TUESDAY

EHDI Conference 2009

AGENDA • TUESDAY

Tuesday, March 10, 2009

| | | |
|-------------------|--|--|
| 8:45 AM–9:45 AM | Plenary Session III *Continuing Medical Education Provided Achieving Cultural and Linguistic Competence Tawara D. Goode, MA Moderator: Irene Forsman, RN, MS | Crystal Ballroom |
| 9:45 AM–9:50 AM | Presentation of Poster Awards | Crystal Ballroom |
| 9:50 AM–10:05 AM | Refreshment Break | |
| 10:05 AM–11:05 AM | Topical Session 4 | <i>*All presentations are 30 minutes unless otherwise specified.</i> |

TOPICAL SESSION 4

Room - Crystal I

Parent Driven Early Hearing Detection and Intervention
Presented by Aimee Robertson, Byron Robertson, Joanna Gallegos, Donna Francis, Linda Daniel, Michelle Gilentine, Lanna McClain, Dianna Poepelmeyer, Alicia Favila
60 minutes

Room - Crystal II

Surveying Adults Deaf Since Childhood: Identifying and Addressing Disparities Through Community-Based Participatory Research
Presented by Deirdre Schlehofer, Steven Barnett

Health Outcomes for Deaf Children: Results of a Survey of Deaf Adults

Presented by Steven Barnett, Deirdre Schlehofer

Room - Crystal III

Reflections on Identity
Presented by Irene Leigh

Room - Crystal VI

Guide by Your Side: Customizing Parent to Parent Support in Different States
Presented by Leeanne Seaver, Sara Kennedy, Candace Lindow Davies, Ginger Mullin, Elizabeth Seeliger

Family Support: It's Time for Your Check-Up!

Presented by Patti Martin, Leeanne Seaver

Room - Crystal VII

The Newborn Hearing Screening Training Curriculum

Presented by Randi Winston, Lylis Olsen

Michigan's On Line Hearing Screener Training

Presented by Lorie Lang

Room - Crystal VIII

The Alaska EHDI and Bloodspot Database Integration Project

Presented by Thalia Wood, Lura Daussat

Utilizing the EHDI Database to Develop an Effective System for Follow-up in Alaska

Presented by Beth Kaplan, John Cartwright

Room - Laliq I

Developing Community Partners to Support Increased Access to Cultural Diversity Access

Presented by Jill Ellis, Helisa Katz

Room - Laliq II

Choices, Options, Opportunities ... How Does a Family Decide?

Presented by Cheri Dowling

Can You Tell Me About...?

Presented by Carol Busch

Room - Spectrum

Facilitating Communication & Language for Children with Cochlear Implants and Vision Impairments

Presented by Kathleen Stremel

Early Detection and Intervention for Infants Who Are Deafblind: Towards Integrated Practices

Presented by Jerry Petroff, Kathleen Stremel

EHDI Conference 2009

AGENDA • TUESDAY

Tuesday, March 10, 2009

10:05 AM–11:05 AM

Topical Session 4 (Continued)

**All presentations are 30 minutes unless otherwise specified.*

TOPICAL SESSION 4

Room - Waterford

Monitoring Infants at Risk for Late Onset Hearing Loss: Who and Why?

Presented by Angelique Boerst

Challenges Ensuring Hearing Screening and Follow-up for Infants Transferred to a Neonatal Intensive Care Unit

Presented by Janet Farrell, Margaret Toro, Rashmi Dayalu, Marcy Chant

Room - Colonnade

Does Newborn Hearing Screening Contribute to Parent Anxiety?

Presented by Todd Houston

Breaking the News: Informational and Adjustment Counseling for Audiologists

Presented by Les Schmeltz, Diane Sabo, Erika Blanchard

Room - Baccarat

The NAL HEARLab, a Cortical Assessment Tool for the Clinic

Presented by George J. Frye, Frye Electronics, Inc. (EXHIBITOR)

New Born Tracking – An Integrated Model

Presented by Michael Barron, ChallengerSoft (EXHIBITOR)

11:20 AM–12:20 PM

Topical Session 5

**All presentations are 30 minutes unless otherwise specified.*

TOPICAL SESSION 5

Room - Crystal I

Game Plan for Coaching Families

Presented by Teresa Caraway

60 minutes

Room - Crystal II

Advocating for Your Child Using the Individuals with Disabilities Education Act (IDEA)

Presented by Barbara Raimondo

Room - Crystal III

Creating Pathways to Language Development through the Use of Cochlear Implants and Music

Presented by Carissa Moeggenberg

Language Outcomes of Young Children with Cochlear Implants and Additional Disabilities

Presented by Susan Wiley, Jareen Meinzen-Derr

Room - Crystal VI

Indiana's EHDI Alert Response System (EARS): Incorporating Follow-up Protocols and Collaborating with External Organizations

Presented by Bob Bowman, Gayla Hutsell Guignard, Julie Schulte

Developing a Statewide Web-Based EHDI Tracking and Referral System

Presented by Miranda Perdue, Elizabeth Seeliger

Room - Crystal VII

Assuring Financial Access to Hearing Aids for Infants and Young Children

Presented by Karl White

Hearing Screening in Part C Early Intervention Programs

Presented by William Eiserman, Diane Behl, Lenore Shisler

Room - Crystal VIII

Using Videophones for Early Family Sign Language Instruction

Presented by Diana Poeppelmeyer

Positive Support: A UK Study of Deaf Children and their Families

Presented by Bencie Woll

Room - Lalique I

What Do Parents of Children with Hearing Loss and Comorbid Congenital Anomalies Want Us to Know?

Presented by Kathleen Lynch

Hearing Loss in Medically Fragile Infants and Young Children

Presented by Brandt Culpepper, Patti Martin

EHDI Conference 2009

AGENDA • TUESDAY

Tuesday, March 10, 2009

11:20 AM–12:20 PM

Topical Session 5 (Continued)

**All presentations are 30 minutes unless otherwise specified.*

TOPICAL SESSION 5

Room - Lalique II

Improving EHDI Outcomes: Creating a Roadmap for Success
Presented by Alicia Favila, Lisa Rogers

Learning How to Make the EHDI Connections on Time
Presented by Karen Munoz, Richard Harward

Room - Spectrum

California's Cochlear Implant Program for Children: Trends from the EHDI Program
Presented by Lisa Satterfield

Helping Families Achieve the Best Outcome for their Child with a Cochlear Implant
Presented by Donna Sorkin, Ashley Fairleigh

Room - Waterford

Small Change Can Make a Big Difference
Presented by Ginger Mullin, Rita Klemm, Gail Tanner

Small Changes Making Waves in California – Maintaining a Quality Improvement Collaborative over Time
Presented by Hallie Morrow

Room - Colonnade

On Being a Deaf Role Model
Presented by Katherine Rogers

It's Not about Turf or Territory...It's About Listening to a Family
Presented by Maryann Swann, Lori Moers, Deborah Marquez, Mary Ann Richmond, Cheri Dowling

Room - Baccarat

Efficiency Gain with Maven Early Hearing and Birth Defect Management
Presented by Joy Alamgir, Consilience Software (EXHIBITOR)

Introduction to the HI*TRACK EHDI Data Surveillance & Management Software
Daniel Ladner, HI*TRACK (EXHIBITOR)

12:20 PM–1:55 PM

AAP Chapter Champions Working Lunch (*By Invitation*)

Le Gala (*1st floor*)

**Continuing Medical Education Provided*

12:20 PM–1:55 PM

Lunch – Cash Sales Available in the Exhibit Hall

Garden Court

1:00 PM–1:45 PM

Poster Session #2 • Exhibits Open

Garden Court

1:00 PM–1:45 PM

Latin American EHDI Programs

Malachite Boardroom (*1st floor*)

1:55 PM–2:55 PM

Topical Session 6

**All presentations are 30 minutes unless otherwise specified.*

TOPICAL SESSION 6

Room - Crystal I

Power of Communities, Perceptions and Words
Presented by Beth Benedict, Ben Bahan, Marilyn Sass-Lehrer

How Oral Deaf Children Navigate Through Hearing Communities
Presented by John Egbert

Room - Crystal II

Supporting Family Literacy with Research-Based Strategies
Presented by Susan Lenihan, Gale Rice

Using Bilingual Approach to Promote Literacy
Presented by Barbara DiGiovanni, Lisa DeWindt-Sommer

Room - Crystal III

Issues Related to Using Sedation in EHDI Diagnostic Procedures
Presented by Munoz Karen, Irene Forsman

Non-sedated ABR Techniques
Presented by Yuri Sokolov

EHDI Conference 2009

AGENDA • TUESDAY

Tuesday, March 10, 2009

1:55 PM–2:55 PM

Topical Session 6 (Continued)

**All presentations are 30 minutes unless otherwise specified.*

TOPICAL SESSION 6

Room - Crystal VI

Illinois Institute for Parents of Preschool Children
Presented by Ginger Mullin, Leslie Frederick, Leslie Lynch, Sue Brosmith

Summer and Weekend Programs for Children with Hearing Loss and their Families - Preparing Families to be Proactive for Socialization Needs
Presented by Gina Oliva, Summer Crider

Room - Crystal VII

Serving Babies with Minimal or Unilateral Hearing Loss
Presented by Kim Hamren, Maura Berndsen

Prevalence and Outcomes of Children with Unilateral Hearing Loss Depending on Case Definition
Presented by Danielle Ross, Tielin Qin

Room - Crystal VIII

Service Improvement through Effective Quality Assurance: The Experience of the England Newborn Hearing Screening Programme
Presented by Gwen Carr

Working Together: The Information Exchange Between Families, Pediatric Audiologists and Early Interventionists to Maximize Outcomes
Presented by Teresa Caraway, Jessica Ballard

Room - Lalique I

Home, Home on the Range
Presented by Vickie Thomson, Albert Mehl

Remodeling a Local EHDI Program
Presented by Vickie Thomson, Emily Fields, Sara Kennedy, Denise Davis-Pedrie

Room - Lalique II

Personnel Preparation: An Integrated Model of Training in Audiology, Speech-Language Pathology, & Deaf Education
Presented by Todd Houston

A Metaphor for Collaboration: 'Hug O' War'
Presented by Joy Kearns, Kathleen Sussman

Room - Spectrum

"The Best Laid Family Support Plans: Lessons Learned from State Teams"
Presented by Gayla Hutsell Guignard, Patti Martin

The Impact on Parents and Professionals of the Use of a Structured Monitoring Protocol for Early Identified Deaf Children
Presented by Ros Hunt

Room - Waterford

Learning Collaborative Approach to Improve Hospital Referrals to the New York City Early Intervention Program
Presented by Brenda Chouffi, Prashil Govind, Laura Tocci, Linda Stone

Web Toolkit for Quality Improvement
Presented by Elizabeth Seeliger

Room - Colonnade

Information to Insight: Learning From One Another
Presented by Karen Hopkins, Anne McNally

EXIT ONLY - A Road Guide for the Journey in Helping Deaf or Hard of Hearing Children
Presented by Susan Hagarty

2:55 PM–3:10 PM

Refreshment Break

AGENDA • TUESDAY

EHDI Conference 2009

AGENDA • TUESDAY-WEDNESDAY

Tuesday, March 10, 2009

3:10 PM–3:40 PM

Topical Session 7

**All presentations are 30 minutes unless otherwise specified.*

TOPICAL SESSION 7

Room - Crystal I

It Even Happens to Kids: Later Onset and Progression of Hearing Loss
Presented by Margaret Kenna

Room - Crystal II

Medical Home Viewed through the Eyes of Families
Presented by Kathleen Watts, Anne McNally

Room - Crystal III

Web Site Assessment and Design for Programs on Limited Budgets
Presented by Steve Richardson

Room - Crystal VI

The Importance of Data Flow Rate in Effective Communication
Presented by John Egbert

Room - Crystal VII

Creating a Multi-State Collaborative to Address EHDI Issues
Presented by Sally Hiner, Molly Pope, Ravi Shah, Reena Kothari

Room - Crystal VIII

In Home Hearing Tests for Lost to Follow-up
Presented by Amanda Angerstien, Sandra Domoracki, Sheryl Silver

Room - Lalique I

Deaf Children Can Talk: The Impact of a Focused Program
Presented by Jean Moog, Betsy Brooks

Room - Lalique II

Assessment for All Children
Presented by Dinah Beams, Jennie Germano

Room - Spectrum

Accelerating Evidence into Practice for the Benefit of Children with Early Hearing Loss
Presented by Shirley Russ, Denise Dougherty

Room - Waterford

Competencies for Early Interventionists: Finding Consensus
Presented by Arlene Stredler Brown, Mary Pat Moeller, Marilyn Sass-Lehrer

Room - Colonnade

Service Model for Culturally Deaf Families Choosing Spoken Language
Presented by Sarah Dawson Wainscott

3:55 PM–4:45 PM

Closing Plenary Session **Continuing Medical Education Provided*

Crystal Ballroom

Auditory Neuropathy Spectrum Disorder (ANSD)

Kai Uus, MD, PhD • Yvonne Sininger, PhD • Debrorah Hayes, PhD

Moderator: John Eichwald, MA, CCC-A

Wednesday, March 11, 2009

7:30 AM–3:00 PM

State EHDI Coordinators Meeting *(By Invitation)*

Lalique I

EHDI Conference 2009

SUB-GROUP MEETINGS

SUB-GROUP MEETINGS TAKING PLACE DURING THE CONFERENCE

Pacific Rim EHDI Programs

(By Invitation)

Saturday, March 7, 8:00 AM–5:00 PM, Laliq I

People involved in implementing EHDI programs in the Pacific Rim will meet together to discuss how they can coordinate efforts and learn from each other. More information is available from John Eichwald, bmv7@cdc.gov.

AAP New Chapter Champions Orientation

(By Invitation)

Sunday, March 8, 7:00 PM–8:00 PM, Crystal II

MCH-LEND Dinner

(By Invitation)

Sunday, March 8, 7:00 PM–9:30 PM,
La Corniche *(Inside the Monte Carlo Restaurant, 1st floor)*

MCH-LEND Lunch

(By Invitation)

Tuesday, March 10, 12:20 PM–1:55 PM,
Mayfair Room *(1st floor)*

Part C & EHDI Work Group

(By Invitation)

Monday, March 9, 12:00 PM–1:45 PM,
Malachite Boardroom *(1st floor)*

The purpose of the Part C / EHDI Work Group is to increase collaboration between Part C and EHDI programs in order to strengthen services to children and families as they progress through the EHDI continuum. This meeting is an invited participant work session. For more information, contact Karen Clark at 214-769-4749 or kclark@utdallas.edu.

AAP Chapter Champions Dinner

(By Invitation)

Monday, March 9, 7:30 PM–9:30 PM,
(off site at local restaurant)

AAP Chapter Champions Working Lunch

(By Invitation)

*Continuing Medical Education Provided
Tuesday, March 10, 12:20 PM–1:55 PM,
Le Gala *(1st floor)*

Latin American EHDI Programs

Tuesday, March 10, 1:00 PM–1:45 PM,
Malachite Boardroom *(1st floor)*

Representatives from several Latin American countries who are at various stages of implementing EHDI programs will meet together to discuss how they can coordinate efforts and learn from each other. Lunch is available for purchase in the Exhibit Hall, you may bring lunch with you to the discussion. For more information contact Karl White at karl.white@usu.edu or Claudia Gaffney at cgaaffney@cdc.gov.

State EHDI Program Coordinator Meeting

(By Invitation)

Wednesday, March 11, 7:30 AM–3:00 PM,
Laliq I *(2nd floor)*

All state EHDI coordinators or their designees are invited to participate in a “grantee meeting.” More information is available from Karl White, karl.white@usu.edu.

INFORMAL NETWORKING OPPORTUNITIES

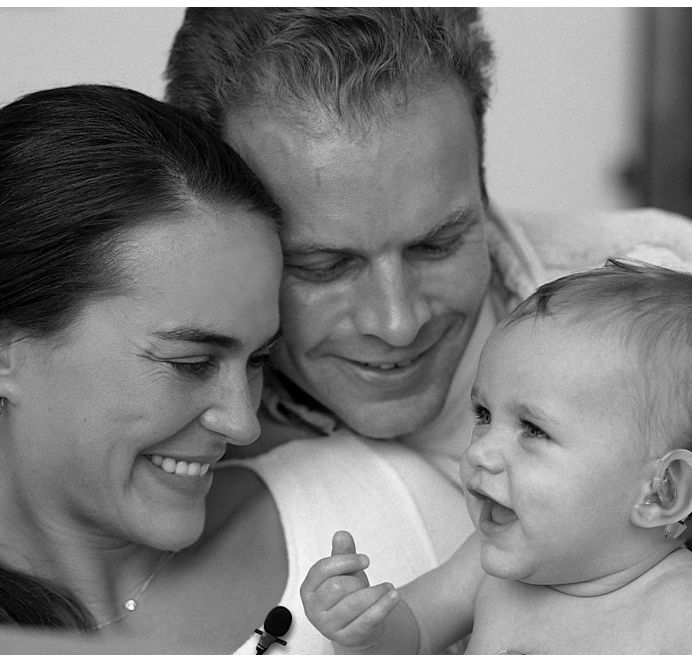
Crystal Ballroom Foyer

ASL For Everybody

Are you curious about American Sign Language? Want to practice your skills? Pick up a few more? Then gather at the ‘ASL for Everybody’ table in the Crystal Foyer, where experienced signers and facilitators will be “on hand” to encourage you in your efforts! Be prepared to socialize, ask any questions you have, and most of all, to have fun! Don’t miss this informal - and informative - opportunity!

The Parent Place

Come to The Parent Place throughout the conference to meet and mingle with other parents and family members of children who are deaf or hard-of-hearing.



EHDI Conference 2009

POSTER PRESENTATIONS

Presentations are located in the Garden Court. Specific poster locations are outlined on the Exhibitor/Poster Layout on the back inside cover of this booklet.

Poster presentations offer participants time to share information, network, and engage in dialogue on EHDI issues. Over 40 posters were accepted for the 2009 EHDI Conference, including some of the top-ranking abstracts received this year.

Posters will be available for viewing throughout the conference, and poster presenters will be on hand during the poster session times listed below.

Poster Session #1

Monday, March 9
12:45 PM–1:45 PM

Poster Session #2

Tuesday, March 10
1:00 PM–1:45 PM

Poster Awards

A panel of judges will evaluate the posters based on abstract reviews and effective design. Blue ribbons placed on the posters will identify the winners.

Poster Awards Presentation

Tuesday, March 10
9:45 AM
Crystal Ballroom
(following Plenary Session 3)

P-1

California NICHQ Collaborative – Then and Now
Presented by Hallie Morrow

P-2

EHDI System Outcomes and Selected Demographics
Presented by Jeff Hoffman, Jim Beavers

P-3

Engaging Physicians in the EHDI Process
Presented by Marlene Hesley

P-4

Enhancing Collaboration and Education through Follow-up
Presented by Valerie Odeh, Keith Garrett

P-5

Impacting Loss to Follow-up Through Small Tests of Change in Arizona
Presented by Valerie Odeh, Keith Garrett

P-6

Follow-up Infrastructure on a Public Health Foundation
Presented by Valerie Odeh, Keith Garrett

P-7

From Legislation to Implementation: Minnesota's Improved and Coordinated EHDI Tracking and Follow-Up System
Presented by Nicole Brown, Kirsten Coverstone, Yaoli Li, Candace Lindow-Davis

P-8

Infants Transferred from a Birth Hospital to Another Facility in Massachusetts
Presented by Janet Farrell

P-9

New York State Newborn Hearing Screening NICHQ Learning Collaborative
Presented by Brenda Knudson Chouffi, Laura Tocci, Prashil Govind, Linda Stone, Pnina Bravmann

P-10

Some Days You Eat the Mountain and on Other Days the Mountain Eats You
Presented by Vickie Thomson, Emily Fields

P-11

The Colorado Experience with the NICHQ Collaborative
Presented by Vickie Thomson

P-12

The Learning Collaborative: Improving the System of Care for Washington State's Newborn Hearing Screen Program through Small Tests of Change
Presented by Martha Lucas

P-13

Using the NICHQ Blueprint to Achieve EHDI Goals in Utah, Presented by Richard Harward, AuD, CCC-A

P-14

Why Aren't Infants Getting Audiologic Evaluations (Or Are They)?; Results from a Parent Survey Conducted by the Washington State EHDI Program
Presented by Karin Neidt, Debra Lochner Doyle

P-15

Addressing the Needs of the Texas EHDI Program through the Creation of a Health Information Exchange
Presented by Eugenia Dunham, Mary Catherine Hess

EHDI Conference 2009

POSTER PRESENTATIONS

Presentations are located in the Garden Court. Specific poster locations are outlined on the Exhibitor/Poster Layout on the back inside cover of this booklet.

P-16

Analysis of Barriers to Follow-up from 10 Hospital UNHS Programs
Presented by Patty Shappell

P-17

Association of Maternal Characteristics with Language Outcomes at 18 Months for Children with Congenital Hearing Loss
Presented by Betty Vohr, Julie Jodoin-Krauzyk, Lucille St. Pierre, Richard Tucker

P-18

Birth Certificate Application: Another Tool to Reduce Loss to Follow-up
Presented by Richard Harward

P-19

Building Capacity of Improved Follow-up Processes in Sao Paulo Brazil
Presented by Doris Lewis, Alison Hart

P-20

Communication Outcomes Research Project
Presented by Judy Harrison

P-21

Developing EHDI Leadership
Presented by Melody Harrison

P-22

Dispelling Myth: Evidence-based Professional Development for the 21st Century
Presented by Helen Morrison

P-23

Early Childhood Hearing Screening: A Comparison of Training Delivery Methods and Learning Outcomes
Presented by Karen Munoz, Joseph Dansie

P-24

EHDI 2006 Demographic Data
Presented by Claudia Gaffney

P-25

Family Choices: Facilitating the EHDI Decision Making Process
Presented by Nannette Nicholson, Alan Vanbiervliet, Meghan Powell

P-26

Gaining Cooperation of Pediatric Audiologists: The Stick and the Carrot
Presented by Karen Anderson

P-27

Geographic Analysis of Audiologic Diagnostic Loss to Follow-up in Massachusetts
Presented by Rashmi Dayalu

P-28

Growing Up with a Cochlear Implant: A Young Woman Tells Her Story
Presented by Summer Crider

P-29

HEAR for Kids: Filling the Gaps in EHDI
Presented by Lylis Olsen

P-30

Hearing Parents of Deaf Children: The Effects of Health Professionals' Advice on Parental Decision-Making
Presented by Lori Day

P-31

Informed Choice: Theory into Practice
Presented by Ros Hunt, Gwen Carr

P-32

Integrating Newborn Screening Data for Program Improvements
Presented by Ellen Amore, Winnie Chung, Brenda Rapoza

P-33

iTransition: It's All About Me! Overview
Presented by Cindy Camp

P-34

Neuroanatomical Differences in Children with Unilateral Sensorineural Hearing Loss as Determined by Functional MRI
Presented by Vincent Schmithorst

P-35

Now What Do We Do?
Presented by Kathleen Anderson, Mary Cashman-Bakken

P-36

Osteogenesis Imperfecta and Audiological Protocol: An Evidence-Based Study
Presented by Thea Wilson

P-37

Pediatrician Survey on EHDI Knowledge, Attitude, and Practice
Presented by Kelly Daniel, Eric Cahill, Lou Ann Jones

P-38

Potential Economic Benefits of Preventing Congenital Cytomegalovirus (CMV) Infections in the United States
Presented by Scott Grosse

P-39

Speech Sounds: An Auditory Habilitation Tool to Promote Spoken Language
Presented by Donna Sorkin

P-40

The Bonding of Hearing Mothers to Deaf Infants
Presented by Sarah Ammerman

P-41

The Parent Decision Guide
Presented by Janet DesGeorges, Terri Patterson

P-42

What do Dads Know, Anyway?
Presented by Holly Pedersen, Cory Maclver

EHDI Conference 2009

EXHIBITORS

The 2009 EHDI Conference Planning Committee would like to express their appreciation to all of the following exhibitors for supporting the EHDI Conference.

Exhibits will be open:

Monday, March 9
7:30 AM–7:30 PM

Tuesday, March 10
7:30 AM–2:30 PM

★ Special thanks to the following exhibitors for sponsoring lunch on Monday

| Booth | Exhibitor Name | Website |
|-------|--|--|
| 1 | Deaf Bilingual Coalition | www.dbcusa.org |
| ★ 2 | ChallengerSoft | www.ChallengerSoft.com |
| 3 | National Center for Hearing Assessment and Management (NCHAM) | www.infanthearing.org |
| 4 | Maico Diagnostics | www.maico-diagnostics.com |
| ★ 5 | American Speech-Language-Hearing Association (ASHA) | www.asha.org |
| 6 | Otodynamics Ltd. | www.oae-ilo.co.uk/enter.asp |
| 7 | Netsmart Technologies | www.ntst.com |
| 8 | Graduate Studies Program in Auditory Learning & Spoken Language, Utah State University | www.auditorylearning.usu.edu |
| 9 | Relay Texas | www.txcaptel.com |
| 10 | Alexander Graham Bell Association for the Deaf and Hard of Hearing | www.agbell.org |
| 11 | Beginnings for Parents of Children | www.ncbegin.org |
| 12 | Bolesta Center, Inc. | www.bolestacenter.org |
| 13 | Audio Electronics, Inc. | www.audioelectronicsinc.com |
| 14 | Center for Early Intervention on Deafness | www.ceid.org |
| 15 | Let Them Hear Foundation | www.letthemhear.org |
| 16 | Vivosonic, Inc. | www.vivosonic.com |
| ★ 17 | Oticon, Inc. | www.oticon.com |
| 18 | MED-EL Corporation | www.medel.com |
| ★ 19 | Consilience Software | www.consiliencesoftware.com |
| 20 | Natus Medical, Inc. | www.natus.com |
| ★ 21 | HI*TRACK | www.hitrack.org |
| 22 | Centers for Disease Control and Prevention, EHDI Program | www.cdc.gov/ncbddd/ehdi/ |
| 23 | National Cued Speech Association | www.cuedspeech.org |
| 24 | American Academy of Pediatrics (AAP) | www.aap.org |
| 25 | Cochlear Americas | www.cochlear.com |
| 26 | Association of University Centers on Disabilities (AUCD) | www.aucd.org |
| 27 | The Omaha Hearing School | www.oraldeafed.org/schools/omaha/index.html |
| 28 | Hands & Voices | www.handsandvoices.org |
| 29-30 | Oral Deaf Education | www.oraldeafed.org |
| 31 | John Tracy Clinic | www.jtc.org |
| 32 | DAC Medical | www.dacmedical.com |
| ★ 33 | OZ Systems | www.OZ-Systems.com |
| 34 | Family Support & Resource Center | www.fsrcdane.org |
| 35 | Intelligent Hearing Systems | www.ihsys.com |
| 36 | Phonak | www.phonak-us.com |
| 37 | Frye Electronics, Inc. | www.frye.com |
| 38 | Advanced Bionics | www.advancedbionics.com |

EHDI Conference 2009

STATE TEAM MEETINGS

STATE TEAM MEETINGS

Again this year at the annual EHDI Conference, networking time will be provided to help participants maximize what they learn at the conference and use the knowledge gained to improve their state's EHDI program when they return home. Two sessions at the 2009 annual EHDI Conference will be devoted to State EHDI team collaboration and planning. During these sessions, state team members will meet to coordinate participation in conference presentations and will also develop a written action plan for the state EHDI team.

To facilitate this collaboration and planning, the State Team Meetings will be structured as described below.

PREPARATION FOR THE EHDI CONFERENCE:

- Prior to the conference, participants will begin thinking about the specific needs of their state's EHDI program and what they would like to learn from the conference workshops. State teams may choose to review their Action Plan from last year's conference (available at <http://ehdiconference.org/State.cfm> for those states that submitted them); to continue development of the goals, objectives and activities of their HRSA and/or CDC grants; to review their state EHDI laws and regulations, and to continue the implementation of the Joint Committee on Infant Hearing 2007 Position Statement recommendations. In addition, participants may wish to coordinate with other participants from their state about state EHDI program needs, plans and conference attendance.
- Individual participants are encouraged to complete the Pre-Conference Individual Reflection and Planning form. The schedule for the conference and abstracts for all of the sessions are available on the conference website. This information may be used during any pre-conference planning meetings or at the State Team Meetings during the conference.
- States may choose to communicate among registered participants prior to the conference for preliminary planning purposes to discuss state priorities and initiatives.

STATE TEAM MEETINGS DURING THE EHDI CONFERENCE:

- **Monday, March 9, 2009 - 9:45 AM to 10:35 AM** - The initial meeting will include introductions, defining EHDI priorities in the state/territory, and devising a strategy for the team to gain as much information as possible during the conference. Each state team will review the Conference Program Book and decide how to coordinate attendance at sessions so that representatives from the state will attend sessions that are most relevant to priorities in their state. The Team-Up at the EHDI Conference worksheet will be provided as a template to help the group ensure that team members attend all sessions where information vital to the state's priorities will be presented.
- **Tuesday, March 10, 2008 – 7:30 AM to 8:30 AM** - During the second meeting, the state team will reconvene to determine specific actions that can be taken by the group to address one or more of the priorities to EHDI in the state/territory. Teams are encouraged to consider actions that work in tandem with state plans such as those developed for CDC and HRSA grants or activities related to the Joint Committee on Infant Hearing's 2008 recommendations. The State Team Action Plan form has been provided as a template to assist the state team in detailing actions to take within the next 12 months. A "goal bank" will be available to provide ideas of possible goals to consider.

AFTER THE EHDI CONFERENCE:

- Following the 2009 EHDI Conference, the NCHAM Network consultants will be available to provide technical assistance as needed to support the action plan the state team develops. Prior to the 2010 EHDI Conference, each state team will be asked to provide a brief update on accomplishments and progress made.

Team Up!

at the EHDI Conference

With all of the great sessions and information shared, it's impossible for any one person to take in everything. In light of your State Team Meeting discussion and Pre-conference Individual Reflection and Planning form, we encourage you to take a few minutes to determine which sessions are most relevant to addressing your state's priorities. Please work together to ensure that at least one person from your team attends each 'most relevant' session. This sheet has been provided to assist your team in making a plan so that your group doesn't miss out on vital information.

In addition, we have provided the Session Notes and Application form to record notes from each session you attend (see pages 29-32).

Monday, March 9

| Sessions | Sessions most relevant to state priorities | Person attending |
|--------------------------|--|------------------|
| Topical Session 1 | | |
| | | |
| | | |
| | | |
| Poster Session 1 | | |
| | | |
| | | |
| | | |
| Topical Session 2 | | |
| | | |
| | | |
| | | |
| | | |
| Topical Session 3 | | |
| | | |
| | | |
| | | |

EHDI Conference 2009

STATE TEAM MEETINGS

Team Up!
at the EHDI Conference

Tuesday, March 10

| Sessions | Sessions most relevant to state priorities | Person attending |
|--------------------------|--|------------------|
| Topical Session 4 | | |
| | | |
| | | |
| | | |
| Topical Session 5 | | |
| | | |
| | | |
| | | |
| Poster Session 2 | | |
| | | |
| | | |
| | | |
| Topical Session 6 | | |
| | | |
| | | |
| | | |
| Topical Session 7 | | |
| | | |
| | | |
| | | |

2009 Early Hearing Detection and Intervention Conference State Team Action Plan
 (This is an Example Form – the state coordinators will have this form at the State Meetings)

| WHAT are we going to do? (Goals, Objectives, and Activities) | WHO is responsible? (and helpers) | WHEN will it happen? Begin | Finish | What OBSTACLES and RESOURCES Exist? |
|--|---|--|--|---|
| <p>EXAMPLE Goal–Reduce the percentage of children who are lost to follow-up (LTF) or lost to documentation (LTD). Objective 1–Identify factors contributing to LTF/LTD. Activity 1.1–Analyze maternal age, education level, and county of residence for LTF/LTD babies. Activity 1.2–Survey audiologists to determine obstacles to consistent reporting to EHDI program. Objective 2–Determine effective strategies using “small tests of change” in one community. Activity 2.1–Recruit one birth hospital to...etc.</p> | <p>EXAMPLE Dr. Ima Audiologist Susie GradsStudent Joe Helper</p> | <p>EXAMPLE 4/1/09 5/1/09</p> | <p>EXAMPLE 4/30/09 7/31/09</p> | <p>EXAMPLE Resource–Most maternal demographics are known from birth certificate Resource–Contact information for all licensed audiologists Obstacle–Staff time Obstacle–Lack of experience with “small tests of change”</p> |
| <p>Activity to implement during the next year Linked to this Goal/Objective of your EHDI Program's plan -</p> | | | | |
| <p>Activity to implement during the next year Linked to this Goal/Objective of your EHDI Program's plan -</p> | | | | |

E.H.D.I. Conference 2009

SESSION NOTES AND APPLICATION

Instructions – Use this form to record key messages from each session you attend and how you will apply information from the session.

Monday, March 9

| | |
|--|--------------------|
| Opening Plenary: Genetic Screening for Usher Syndrome | |
| <i>Key Messages</i> | <i>Application</i> |
| | |
| State Team Meeting I | |
| <i>Key Messages</i> | <i>Application</i> |
| | |
| Topical Session I | |
| <i>Key Messages</i> | <i>Application</i> |
| | |

EHDI Conference 2009

SESSION NOTES AND APPLICATION

Monday, March 9 (Continued)

| | |
|---|--------------------|
| Poster Session 1 | |
| <i>Key Messages</i> | <i>Application</i> |
| | |
| Topical Session 2 | |
| <i>Key Messages</i> | <i>Application</i> |
| | |
| Topical Session 3 | |
| <i>Key Messages</i> | <i>Application</i> |
| | |
| Plenary II: Aminoglycoside-induced Ototoxicity in Neonates | |
| <i>Key Messages</i> | <i>Application</i> |
| | |

EHLI Conference 2009

SESSION NOTES AND APPLICATION

Tuesday, March 10

| | |
|--|--------------------|
| State Team Meeting 2 | |
| <i>Key Messages</i> | <i>Application</i> |
| | |
| Plenary III: Achieving Cultural and Linguistic Competence | |
| <i>Key Messages</i> | <i>Application</i> |
| | |
| Topical Session 4 | |
| <i>Key Messages</i> | <i>Application</i> |
| | |
| Topical Session 5 | |
| <i>Key Messages</i> | <i>Application</i> |
| | |

EHDI Conference 2009

SESSION NOTES AND APPLICATION

Tuesday, March 10 (Continued)

| | |
|--|--------------------|
| Poster Session 2 | |
| <i>Key Messages</i> | <i>Application</i> |
| | |
| Topical Session 6 | |
| <i>Key Messages</i> | <i>Application</i> |
| | |
| Topical Session 7 | |
| <i>Key Messages</i> | <i>Application</i> |
| | |
| Closing Plenary: Auditory Neuropathy Spectrum Disorder (ANSD) | |
| <i>Key Messages</i> | <i>Application</i> |
| | |

A

Alamgir, Joy
Topical 2-Exhibitor
Topical 5-Exhibitor

Ammerman, Sarah,BS,Med
Poster

Amore, Ellen, BA, MS
Poster

Anderson, Karen, PhD, CCC-A
DSHPSHWA Meeting, Poster

Anderson, Kathleen, BS, MEd,
LSLS Cert AVT
Poster

Angerstien, Amanda, MS, CCC-A
Topical 7

Aponte, Sondi, AAS degree
Topical 4

Aveni, Kathryn, RNC, MPH
Topical 1

B

Bahan, Ben, PhD
Topical 6

Ballard, Jessica, AuD, CCC-A
Topical 6

Barnett, Steve, MD
Topical 4

Barron, Michael, BSc, MBA
Topical 4-Exhibitor

Beams, Dinah, MA, CED
Topical 2, 7

Beavers, Jim, BGS
Poster

Becker, Henry
Topical 2

Behl, Diane, MS
Topical 5

Benedict, Beth, PhD
Topical 1, 6

Berndsen, Maura, MA, CED,
LSLS Cert AVT
Topical 6

Bhatia, Parul, PhD
Topical 1

Blanchard, Erika, MA
Topical 4

Boerst, Angelique, MA, CCC-A
Topical 1

Bowman, Bob
Topical 5

Bravmann, Pnina, MS, CCC/SLP-A
Poster

Brooks, Betsy, MS LSLs Cert AVEd;
CED
Topical 1, 7

Brosmith, Sue, BS, MS
Topical 6

Brown, Nicole, MSN, PHN, CPNP
Poster

Buhrmann, Jan, PhD
Topical 1

Burk, Patricia, MS, CCC-SLP
Topical 3

Burns, Joan, MA, CCC-A
Topical 3

Busch, Carol, MS
Topical 4

C

Cahill, Eric, MS, CCC-A
Poster

Camp, Cindy, MA
Poster

Campbell, William, MCISc
Topical 2

Caraway, Teresa, PhD, CCC-SLP,
LSLS Cert AVT
Topical 5, 6

Carr, Gwen
Topical 2, 6, Poster

Cartwright, John
Topical 4

Cashman-Bakken, Mary, BA, MA,
JD
Poster

Cassidy, Karen, MAEd, CED
Topical 2, 3

Chant, Marcy, AuD, CCC-A
Poster, Topical 4

Chouffi, Brenda, MS
Topical 6

Chung, Winnie, AuD, MS, PhD
Poster

Clark, Karen, MA, CCC-A
Topical 1, 2

Clark, Terrell, PhD
Topical 2

Clem, Becky, MA, CCC-SLP,
LSLS Cert AVT
Topical 1, 2

Cooper, Louis, MD
Topical 2

Coverstone, Kirsten, MA, CCC-A,
FAAA
Poster

Crawford, Lisa, Parent
Topical 1, 3

Crider, Summer, BS
Topical 6, Poster

Culpepper, Brandt, PhD
Topical 1, 5

Cushner, Debra, MA
Topical 2

D

Daniel, Kelly, MS, CCC-A
Poster

Daniel, Linda, AVT
Topical 4

Dansie, Joseph, BS
Poster

Daussat, Lura, MPH
Topical 4

Davis-Pedrie, Denise
Topical 6

Day, Lori, MA
Poster

Dayalu, Rashmi, MPH, BS
Topical 4, Poster

Desai, Raj, MD, PhD
Topical 2

DesGeorges, Janet, Parent
Poster

DeWindt-Sommer, Lisa, BS
Topical 6

DiGiovanni, Barbara, BS, MS
Topical 6

Domoracki, Sandra, MA, CCC-A
Topical 7

Dougherty, Denise, PhD
Topical 7

Dowling, Cheri, Parent
Topical 4, 5

Dreith, Susan, MS
ANSD Workshop

Dunham, Eugenia, MPH, MS
Topical 1, Poster

E

Earley, Deborah, AuD, CCC-A
Topical 3

Egbert, John
Topical 6, 7

Eichwald, John, MA, CCC-A
DSHPSHWA Meeting

Eiserman, William, PhD
Topical 1, 5

Elder, Tamara, MS, CCC-SLP,
Cert AVT
Topical 1

Ellis, Jill, MS
Topical 4

Esquivel, Michelle, MPH

F

Fairleigh, Ashley, MS, CCC-SLP
Topical 5

Farrell, Janet, BA
Topical 4, Poster

Favila, Alicia, BS, MEd
Topical 1, 4, 5

Fields, Emily, MS
Topical 6, Poster

Florio, Arthur, BA
Topical 2

Forsman, Irene, MS, RN
Topical 6, DSHPSHWA Meeting

Foster, Marcia, AuD, CCC-A
Topical 1

Fournier Eng, Denise, MA, CCC-SLP
Topical 2

Foust, Terry, AuD
Topical 1

Francis, Donna
Topical 4

Frederick, Leslie, MS - SLP
Topical 6

Frye, George, BS, MS
Topical 4-Exhibitor

G

Gabbard, Sandra, PhD
Topical 2

Gaffney, Claudia, MPH
Poster

Gaffney, Marcus, MPH
DSHPSHWA Meeting

Gallegos, Joanna, BA
Topical 4

Garrett, Keith, BS, MA
Topical 1, 2, Poster

Gascon-Ramos, Maria, PhD
Topical 2

Gatzemeyer, Meredith, AuD, CCC-A
Topical 3

Germano, Jennie, MS
Topical 7

Gilentine, Michelle, AuD
Topical 4

Golner, Bradley, MD
Topical 3

Goode, Tawara, MA
Topical 3, Plenary III

Govind, Prashil, MD, MPH
Topical 6, Poster

Graham, Alexander T, MBA
Topical 2

Grimes, Alison, AuD
Topical 1

Grosse, Scott, PhD
Topical 3, Poster

H

Hagarty, Susan, MA
Topical 2, 6

Hamren, Kim, MEd, CED, LSLS Cert
AVT
Topical 6

Hanks, Wendy
Topical 1

Harrison, Judy, MA
Topical 2, Poster

Harrison, Melody, PhD, CCC-SLP
Poster

Hart, Alison, MPH
Poster

Hartnett, Mary
Topical 3

Harward, Richard, AuD, CCC-A
Topical 1, 5, Poster

Hayes, Deborah, PhD
Closing Plenary, ANSD Workshop

Hesley, Marlene, LPN
Poster

Hess, Mary Catherine, MA
Topical 2-Exhibitor, Poster

Hiner, Sally, BS, LSW
Topical 7

Hoffman, Jeff, MS, CCC-A
Poster

Holcomb, Tara, Parent
Topical 2

Holt, Judith, PhD
Topical 1

Hopkins, Karen, MEd
Topical 6

Hossler, Erica, BA
Topical 2

Hossler, Tamara, MA
Topical 2

Houston, Todd, PhD
Topical 2, 3, 4, 6

Hunt, Ros, PhD, MSc, BA
Topical 6, Poster

Hutsell Guignard, Gayla, MS
Topical 2, 5, 6

I

J

Jesien, George, PhD
Topical 1

Jodion-Krauzyk, Julie, Med, MA
Poster

Jones, Lou Ann, MS, CCC-A
Poster

K

Kaplan, Beth, MEd
Topical 4

Kasulis, Heather, AuD
Topical 1

Katz, Helisa, MS
Topical 4

Kearns, Joy, MS, CCC-SLP
Topical 6

Kenna, Margaret, MD, FAAP
Topical 7

Kennedy, Sara, MS
Topical 4, 6

Kershman, Susan, BA, MEd, PhD
Topical 2

Kimberling, William J, PhD, FACMG
Opening Plenary

King-Maxey, Mary, BA
Topical 2

Kleindienst, Samantha
Topical 1

Klemm, Rita, BS, MS
Topical 5

Knudson Chouffi, Brenda, MS
Poster

Kothari, Reena, MA, F-AAA
Topical 7

L

Ladner, Daniel, BS
Topical 5-Exhibitor

Lake, Jennifer, MS, CCC-A
Topical 1

Lane, Susan, MA, S-LP ©
Topical 3

Lang, Lorie, MS
Topical 4

Leigh, Irene, PhD
Topical 4

Lenihan, Susan, PhD
Topical 6

Lewis, Doris, PhD
Poster

Li, Yaoli, MD, MS, MA, CCC-A
Poster

Lindow Davies, Candace, MA, Parent
Topical 4, Poster

Lochner Doyle, Debra, BS, MS
Poster

Lucas, Martha, MHA, BA
Poster

Lynch, Kathleen, PhD
Topical 5

Lynch, Leslie, MS
Topical 6

M

MacIver, Cory, Parent
Poster

Malek, Sebastian, MD
Topical 2

Marquez, Deborah, MA
Topical 5

Martin, Patti, PhD
Topical 1, 2, 4, 5, 6

McClain, Lanna
Topical 4

McCracken, Wendy, BA, Med
Topical 2

McNally, Anne, MA
Topical 1, 6, 7

Mehl, Albert, MD, FAAP
Topical 6,
Medical Home Workshop, Poster

Meinzen-Derr, Jareen, PhD
Topical 5

Menezes-Furtado, Gloria, LSLS Cert
AVT, MED CED
Topical 2, 3

Mintz, Sandra, MS, CCC-A
Topical 1

Moeggenberg, Carissa, MA, CCC-A
Topical 1, 5

Moeller, Mary Pat, PhD
Topical 7

Moers, Lori, MA, ABD
Topical 5

Montero, Daniel, MD
Medical Home Workshop

Moog, Jean, MS, LSLS Cert AVEd;
CED
Topical 7

Morrison, Helen, PhD, CCC-A, LSLS
Cert AVT
Poster

Morrow, Hallie, MD, MPH
Topical 5, Poster

Mullen, Charlotte, MA, CCC-A
Topical 2

Mullin, Ginger, AuD
Topical 4, 5, 6

Munoz, Karen, EdD, CCC-A
Topical 2, 5, 6, Poster

N

Neidt, Karin, MPH
Poster

Nevins, Mary Ellen, EdD
Topical 2

Newroth, Ann Marie, MSc
Topical 3

Nicholson, Nannette, PhD
Topical 1, Poster

Nussbaum, Debra, MA CCC-A
Topical 2

O

Odeh, Valerie, BS
Topical 1, Poster

Oliva, Gina, PhD
Topical 6

Olsen, Lyllis, MS, MPH
Topical 1, 4, Poster

Olson, Stephanie, BA
ANSD Workshop

Oyler, Anne, AuD, CCC-A
DSHPHWA Meeting

P

Patterson, Terri, Parent
Poster

Pattinson, Emily, PhD, MSc
Topical 2

Pedersen, Holly, Certified Teacher
D/HH
Poster

Perdue, Miranda
Topical 5

Petroff, Jerry, PhD
Topical 4

Pittman, Paula
Topical 2

Poeppelmeyer, Diana, PhD
Topical 4, 5

Pope, Molly, MAT CCC-AFAAA
Topical 7

Powell, Meghan, PhD
Poster

Q

Qin, Tielin, MD, MSPH
Topical 6

R

Raimondo, Barbara, Esq
Topical 1, 3, 5

Rapoza, Brenda, BS
Poster

Rice, Gale, PhD
Topical 6

Richardson, Steve
Topical 7

Richmond, Mary Ann, MA
Topical 5

Ritter, Jessie, MA, CCC-SLP
Topical 1

Robertson, Aimee, Parent
Topical 4

Robertson, Byron, Parent
Topical 4

Rogers, Katherine, BSc, MS
Topical 5

Rogers, Lisa, MA
Topical 5

Ross, Danielle, PhD, MSc
Topical 3, 6

Roush, Patricia, AuD
Topical 2, ANSD Workshop

Russ, Shirley, MD, MPH
Topical 7, DSHPSHWA Meeting

S

Sabo, Diane, PhD
Topical 4

Salazar, David
Opening Plenary

Salazar, Joe, Parent
Opening Plenary

Salazar, Lita, Parent
Opening Plenary

Sass-Lehrer, Marilyn, PhD
Topical 6, 7

Satterfield, Lisa, MS, CCC-A
Topical 5

Savage, David
DSHPSHWA Meeting

Schick, Brenda, PhD
Topical 3

Schlehofer, Deirdre, MPH
Topical 4

Schmeltz, Les, AuD
Topical 4

Schmithorst, Vincent, PhD
Poster

Schulte, Julie
Topical 5

Seaver, Leeanne, MA
Topical 1, 2, 4

Sedey, Allison, PhD, CCC-A, CCC-SLP
Topical 3

Seeliger, Elizabeth, MA, CCC-A
Topical 3, 4, 5, 6

Shah, Ravi, BS
Topical 7

Shappell, Patty, AuD, CCC-A
Poster

Shisler, Lenore, MS
Topical 1, 5

Silver, Sheryl, MA, PhD
Topical 7

Singer, Yvonne, PhD
Topical 1, Closing Plenary,
ANSD Workshop

Sokolov, Yuri, PhD, MBA
Topical 6

Sorkin, Donna, MA
Topical 1, 5, Poster

St Pierre, Lucille, BS
Poster

Steyger, Peter, PhD
Plenary II

Stone, Linda, PhD
Topical 6, Poster

Stone, Sara, BBA
Poster

Storbeck, Claudine
Topical 2

Stredler Brown, Arlene, MA
Topical 7

Stremel, Kathleen, MA
Topical 4

Sussman, Kathleen, MS
Topical 6

Swann, Maryann, MS
Topical 5

Szarkowski, Amy, PhD
Topical 2

T

Taber, Marcia, MS
ANSD Workshop

Tanner, Gail, AuD
Topical 5

Tharpe, Anne Marie, PhD
Topical 1

Thomas, Sarah, MS, CCC-SLP,
CertAVT
Topical 1, 2

Thompson, Bradley, MA, LPC
Medical Home Workshop

Thompson, Nanette, MS, CCC-SLP,
Cert AVT
Topical 2

Thomson, Vickie, PhD
Topical 6, Poster

Tocci, Laura, AuD
Topical 6, Poster

Toro, Margaret, MA, CCC-A
Topical 4, Poster

Tucker, Richard, BA
Poster

Turchi, Renee, MD, FAAP
Medical Home Workshop

U

Uus, Kai, MD, PhD
Closing Plenary

V

Vanbiervliet, Alan, PhD
Poster

Vohr, Betty, MD, PhD, FAAP
Poster

W

Wainscott, Sarah Dawson, MEd,
CCC-A
Topical 2, 3, 7

Watkins, Christine, CCC-SLP
Topical 1

Watts, Kathleen, MA
Topical 7

Wentworth, Richard, Parent
Poster

White, Debbie
Topical 1

White, Karl, PhD
Topical 2, 5

Widen, Judy, PhD
Topical 1

Wiley, Susan, MD, FAAP
Topical 5, Medical Home Workshop

Wilson, Thea, AuD candidate
Poster

Winston, Randi, AuD
Topical 3, 4

Woll, Bencie, PhD
Topical 5

Wong, Shawnee, BA
Topical 1

Wood, Thalia, MPH
Topical 4

XYZ

Young, Alys, PhD
Topical 2

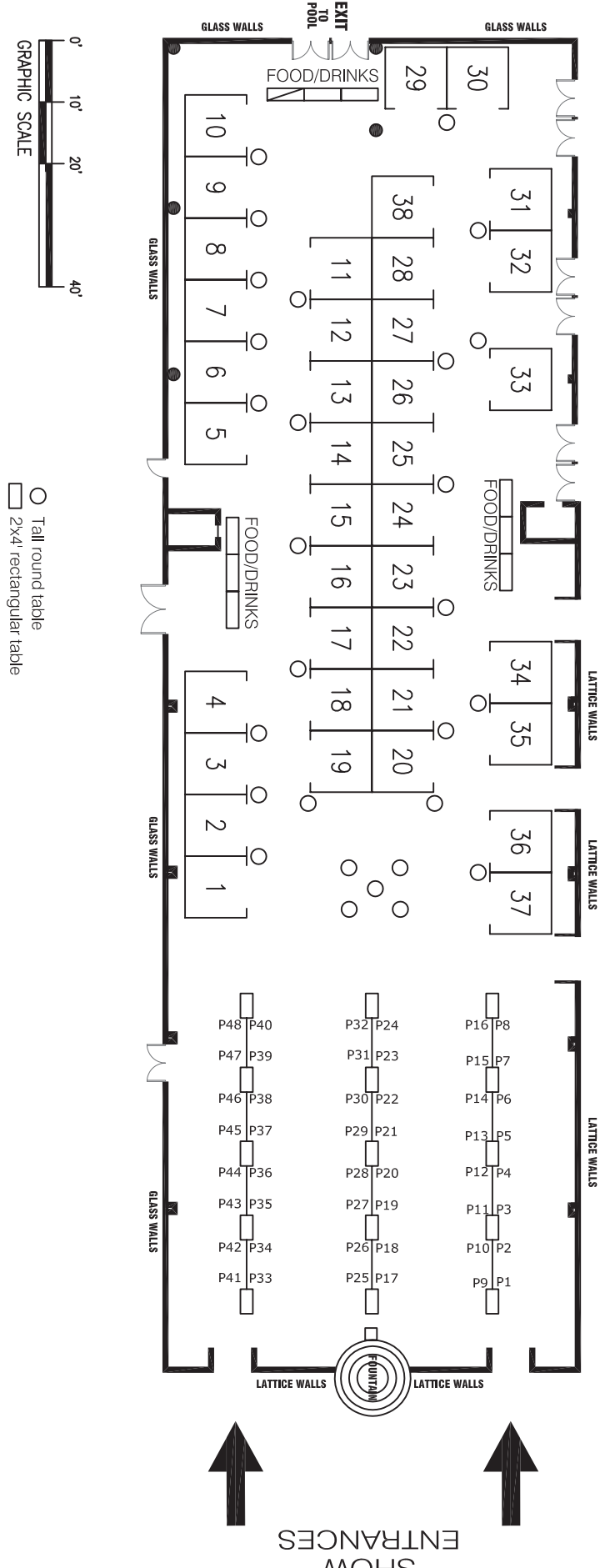
EHDI Conference 2009 **NOTES**

NOTES

Early Hearing Detection & Intervention Conference 2009

March 8-10, 2009

Hotel Intercontinental Dallas, TX
Garden Court



**EXHIBIT MANAGEMENT
SERVICES & EXHIBIT
DRAWING
PROVIDED BY:**

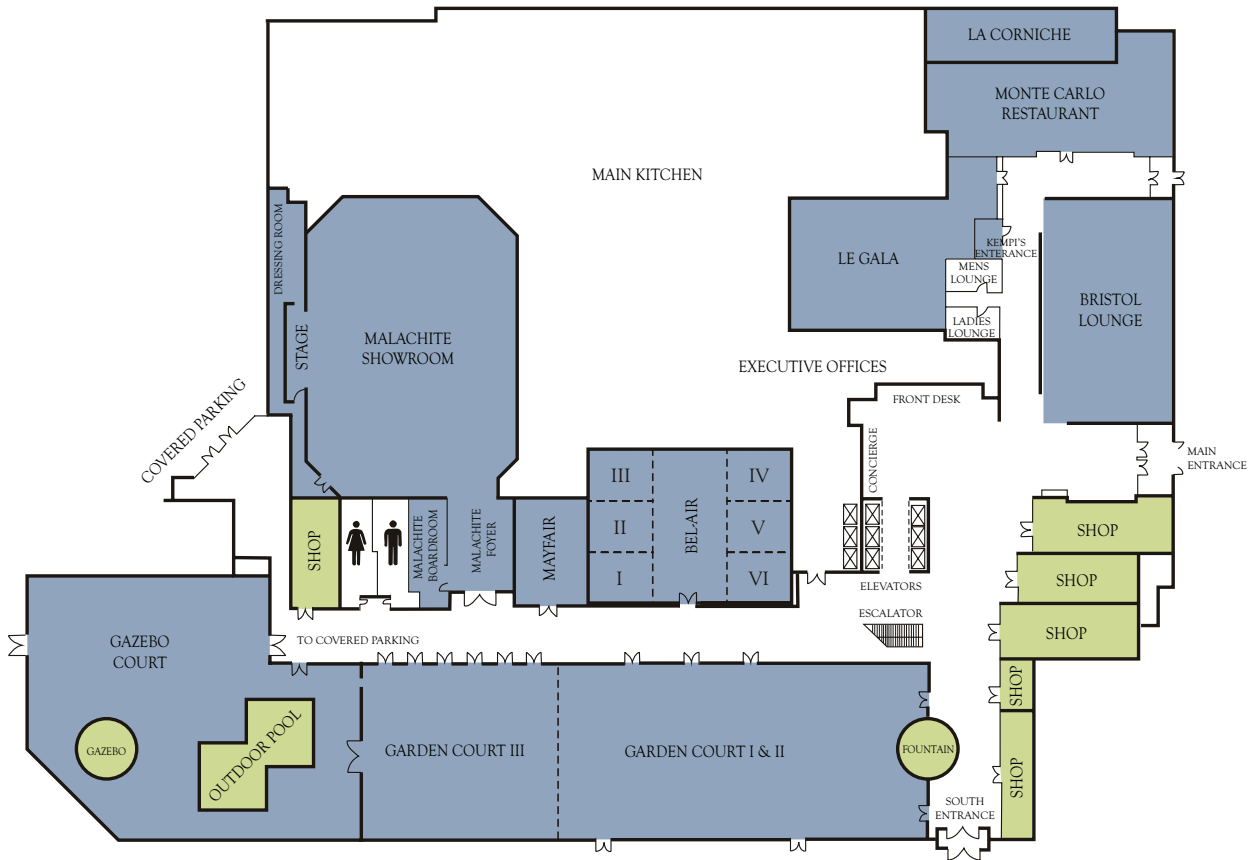
George Fern Company
1500 Old Leonard Avenue
Columbus, Ohio 43219-2509
614-253-1500
Columbus@georgefern.com

Breakfasts, break refreshments,
as well as Monday's lunch
and evening reception will
be served in the Exhibit Hall
(Garden Court).

SHOW
ENTRANCES

INTERCONTINENTAL DALLAS HOTEL

1st Floor (Lobby Level) – Posters/Exhibits/Reception/Lunch/Breaks/State Team Meetings



2nd Floor – Conference Registration/Plenary Sessions/Topical Sessions/State Team Meetings



(All meeting rooms are on the second floor of the hotel, unless otherwise noted)

SATURDAY, MARCH 7, 2009

| | | |
|-----------------|------------------------|------------------------------|
| 3:00 PM–5:00 PM | DSHPSHWA Board Meeting | Mayfair |
| 6:30 PM–8:30 PM | DSHPSHWA Reception | Garden Court III (1st Floor) |

SUNDAY, MARCH 8, 2009

| | | |
|-----------------|---|--------------------------|
| 7:15 AM–9:00 AM | Pre-Conference Registration Open | Crystal Ballroom Foyer |
| 8:15 AM–5:30 PM | Auditory Neuropathy Spectrum Disorder (ANSD) | Crystal III |
| 9:00 AM–6:00 PM | DSHPSHWA Meeting (Will Attend Medical Home 3PM–6PM) | Crystal I |
| 3:00 PM–6:00 PM | Pre-Conference Workshop: Medical Home & EHDI | Crystal II |
| 6:00 PM–8:00 PM | Conference Registration Open | Crystal Ballroom Foyer |
| 6:00 PM–8:00 PM | Speaker Ready Room Open | Steuben |
| 6:00 PM–8:00 PM | Exhibit & Poster Set-Up | Garden Court (1st Floor) |
| 7:00 PM–8:00 PM | AAP New Chapter Champions Orientation (By Invitation) | Crystal II |

MONDAY, MARCH 9, 2009

| | | |
|-------------------|--|--------------------------------|
| 7:00 AM–3:30 PM | Conference Registration Open | Crystal Ballroom Foyer |
| 7:30 AM–5:30 PM | Speaker Ready Room Open | Steuben |
| 7:30 AM–8:15 AM | Continental Breakfast | Garden Court (1st Floor) |
| 7:30 AM–7:30 PM | Exhibits Open | Garden Court (1st Floor) |
| 8:15 AM–9:15 AM | Opening Plenary: Genetic Screening For Usher Syndrome | Crystal Ballroom |
| 9:15 AM–9:25 AM | Overview of State Team Meetings | Crystal Ballroom |
| 9:25 AM–9:45 AM | Refreshment Break | Garden Court (1st Floor) |
| 9:45 AM–10:35 AM | State Team Meetings | Locations are Listed in Packet |
| 10:55 AM–11:55 AM | Topical Session 1 | Various Breakout Rooms |
| 11:55 AM–1:00 PM | Lunch – Provided in the Exhibit Hall | Garden Court (1st Floor) |
| 12:15 PM–1:15 PM | Roundtable on Cultural Competence (Tawara D. Goode, MA) | Mayfair Room (1st Floor) |
| 12:45 PM–1:45 PM | Poster Session 1 & Exhibits Open | Garden Court (1st Floor) |
| 2:00 PM–3:00 PM | Topical Session 2 | Various Breakout Rooms |
| 3:00 PM–3:20 PM | Refreshment Break | Garden Court (1st Floor) |
| 3:20 PM–3:50 PM | Topical Session 3 | Various Breakout Rooms |
| 4:10 PM–5:10 PM | Plenary II: Aminoglycoside-Induced Ototoxicity In Neonates | Crystal Ballroom |
| 5:10 PM–5:20 PM | Antonia Brancia Maxon Award For EHDI Excellence | Crystal Ballroom |
| 5:45 PM–7:30 PM | Reception in the Exhibit Hall | Garden Court (1st Floor) |
| 6:30 PM–7:30 PM | Entertainment: Cowboy Poetry by Dr. Albert Mehl | Malachite Showroom (1st Floor) |
| 7:30 PM–9:30 PM | AAP Chapter Champions Dinner (By Invitation) | Local Restaurant |

TUESDAY, MARCH 10, 2009

| | | |
|-------------------|---|--------------------------------|
| 7:15 AM–12:00 PM | Conference Registration Open | Crystal Foyer |
| 7:15 AM–3:15 PM | Speaker Ready Room Open | Steuben |
| 7:15 AM–8:30 AM | Continental Breakfast | Garden Court (1st Floor) |
| 7:30 AM–2:30 PM | Exhibits Open | Garden Court (1st Floor) |
| 7:30 AM–8:30 AM | State Team Meetings | Locations are Listed in Packet |
| 8:45 AM–9:45 AM | Plenary III: Achieving Cultural and Linguistic Competence | Crystal Ballroom |
| 9:45 AM–9:50 AM | Presentation of Poster Awards | Crystal Ballroom |
| 9:50 AM–10:05 AM | Refreshment Break | Garden Court (1st Floor) |
| 10:05 AM–11:05 AM | Topical Session 4 | Various Breakout Rooms |
| 11:20 AM–12:20 PM | Topical Session 5 | Various Breakout Rooms |
| 12:20 PM–1:55 PM | AAP Chapter Champions Working Lunch (By Invitation) | Le Gala (1st Floor) |
| 12:20 PM–1:55 PM | Lunch – Available for Purchase in the Exhibit Hall | Garden Court (1st Floor) |
| 1:00 PM–1:45 PM | Poster Session 2 & Exhibits Open | Garden Court (1st Floor) |
| 1:55 PM–2:55 PM | Topical Session 6 | Various Breakout Rooms |
| 2:55 PM–3:10 PM | Refreshment Break | Garden Court (1st Floor) |
| 3:10 PM–3:40 PM | Topical Session 7 | Various Breakout Rooms |
| 3:55 PM–4:45 PM | Closing Plenary: Auditory Neuropathy Spectrum Disorder | Crystal Ballroom |

WEDNESDAY, MARCH 11, 2009

| | | |
|-----------------|--|-----------|
| 7:30 AM–3:00 PM | State EHDI Coordinator Meeting (By Invitation) | Lalique I |
|-----------------|--|-----------|