



Chicago²⁰¹⁹



18th Annual Meeting—March 3-5, 2019

Hyatt Regency O'Hare—Chicago, IL



2019 EHDI ANNUAL MEETING
LUNCH & LEARN SEMINAR

Tuesday, March 5, 2019

Sign-in 12:00 | Seminar 12:15-1:30 | International D/E Room

Registration required as seating is limited.

eEHDI Evolution to Revolution

Improving outcomes with Integrity™ V500 and teleaudiology



Featuring Invited Speaker

William (Bill) Campbell, MCISc

eEHDI Advocate & Activist

Voted "Most Likely to Invent Something" by his graduating audiology class, Bill Campbell has been involved in eAudiology since 2008. As a Regional Program Coordinator and audiologist for the Ontario Infant Hearing Program in Thunder Bay, Ontario, Canada since 2001, he has worked to improve access to audiology services in remote northern Canadian communities by removing barriers through eAudiology. His efforts resulted in the inception of the first clinical remote infant ABR services internationally.

He has collaborated with NCHAM to develop a Resource Guide for teleaudiology, and has worked with other organizations to develop their infant teleaudiology and related training program. Having recently transitioned from a successful private practice to consulting, Bill is currently focused on protocol development and training for remote infant ABR assessment, as well as expanding eAudiology services to specialized CMV treatment centers. He is an active member of Phonak's "expert circle" for eAudiology awareness contributing to *eAudiology: Shifting from Theory to Practice*. A member of the Canadian Infant Hearing Task Force, he advocates for national infant hearing programming. As an early pioneer in the evolution of teleaudiology, he is an activist for eEHDI services.

Presentation topics:

1. eAudiology: Shifting from Theory to Practice
2. Practical approaches to teleaudiology for infant hearing programs
3. Transitioning an infant hearing program to Integrity™
4. Establishing a standard ABR assessment protocol
5. Risk monitoring via teleaudiology for delayed onset hearing loss
6. Remote ABR assessment protocol demonstration

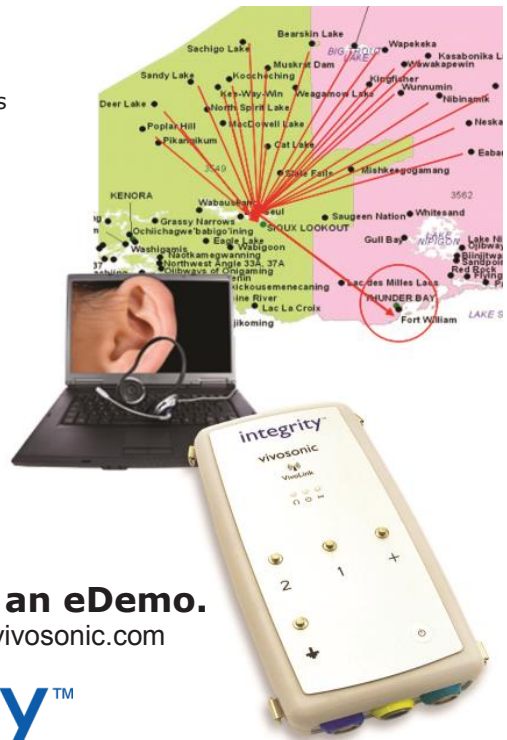
Campbell W. *EHDI Toolkit: Developing a Universal Newborn Hearing Screening Program*. Speech-Language & Audiology Canada webinar.

Campbell W. *Infant Hearing in Canada and the Canadian Infant Hearing Task Force*.

Campbell W & Hyde M. *eEHDI: Functions and Challenges. A Sound Foundation Through Early Amplification, Chapter 6. pp 115-130.*

Montano J, Angley G, Ryan-Bane C, Campbell W, et al. *eAudiology: Shifting from Theory to Practice*. British Society of Hearing Aid Audiologists, October 2018.

NCHAM. *Timely Diagnosis: A Resource Guide Supporting TeleAudiology*.



Drop by booth #33 for an eDemo.
Questions? Please contact info@vivosonic.com



DOWNLOAD OUR FREE APP

Download *Attendify* on Google play or the Apple App Store:

Search for **2019 EHD Meeting** and gain access to: Personal Schedule, Activity Stream, CEU Forms, Maps, Family Info, Student Info, Polls, Up-to-date Info, AND Much More!

Table of Contents

Acknowledgements	2
Welcome.....	3
Continuing Education Units.....	4
Local Information.....	5
Antonia Brancia Maxon Award for EHD Excellence.....	7
Family Leadership Award for EHD Excellence	8
Plenary Session Abstracts & Speaker Bios	10-12
Exhibit Booth Locations.....	15
List of Exhibitors	16-17
Sponsors.....	20
Hotel Map	21
Agenda At-A-Glance.....	Back Outside Cover
Detailed Agenda.....	See Pull-Out Insert

Together We Reach Further

Cochlear develops innovative products, services and resources to support you, your patients and their families.

 **COME VISIT US BOOTH #30**



CAM-MK-PR-412 ISS1 JAN19

Hear now. And always



ACKNOWLEDGMENTS

The meeting organizers recognize and thank the members of the 2019 EHDI Annual Meeting Planning Committee for their hard work and dedication in creating an engaging and productive conference.

EHDI ANNUAL MEETING ORGANIZERS

American Academy of Pediatrics (AAP) | Hands & Voices | National Center for Hearing Assessment and Management (NCHAM) at Utah State University | U.S. Department of Health and Human Services: Health Resources and Services Administration (HRSA)/Maternal and Child Health Bureau (MCHB)

PLANNING COMMITTEE MEMBERS

Karen Aguilar KAguilar@anixter.org	Chicago Hearing Society	Anna Maria Padlan APadlan@hrsa.gov	Maternal and Child Health Bureau, Health Resources and Services Administration (MCHB-HRSA)
Sandra Battiste SBattiste@hrsa.gov	Maternal and Child Health Bureau, Health Resources and Services Administration (MCHB-HRSA)	Yiesell Rayon yiesell@handsandvoices.org	Hands & Voices/Family Advisory Committee Member
Christina Boothby cboothby@aap.org	American Academy of Pediatrics (AAP)	Tony Ronco t_ronco@hotmail.com	Hands & Voices
Treeby Brown TBrown2@hrsa.gov	Maternal and Child Health Bureau, Health Resources and Services Administration (MCHB-HRSA)	Hanna Sawher hanna.sebring@wisc.edu	Children's Hospital of Wisconsin
Müge Chavdar mchavdar@aap.org	American Academy of Pediatrics (AAP)	Brian Shakespeare Brian.Shakespeare@dhw.idaho.gov	Idaho EHDI Program
Pam Dawson pdawson@hear-me-now.org	Hear Me Now	Alyson Ward Alyson.Ward@usu.edu	National Center for Hearing Assessment and Management (NCHAM)
Janet DesGeorges janet@handsandvoices.org	Hands & Voices	Karl White Karl.White@usu.edu	National Center for Hearing Assessment and Management (NCHAM)
Marcia Fort marcia.fort@dhhs.nc.gov	North Carolina EHDI Program	Michele Wilkins MWilkins@childsvoice.org	Child's Voice
Linda Hazard linda.hazard@partner.state.vt.us	Vermont EHDI Coordinator, DSHPSHWA		
Thomas Horejes thomas.horejes@gallaudet.edu	Gallaudet University		
Vicki Hunting vicki.hunting@handsandvoices.org	Hands & Voices		
Mandy Jay mandy.jay@usu.edu	National Center for Hearing Assessment and Management (NCHAM)		
Casey Judd casey.judd@conferencedirect.com	Conference Direct		
Leslie Katz Lestz lklestz@gmail.com	Physician		
Michelle Koplitz mkoplitz@hrsa.gov	Maternal and Child Health Bureau, Health Resources and Services Administration (MCHB-HRSA)		
Christine Liao cliao@AUCD.ORG	Association of University Centers on Disabilities (AUCD)		
Andrea Marwah sjakiddos@gmail.com	Illinois Hands & Voices/Guide By Your Side (GBYS)		
Ginger Mullin ginger.mullin@illinois.gov	Illinois EHDI Program		
Karin Neidt karin.neidt@doh.wa.gov	Washington EHDI Program		
Teresa Nold tnold@sdparent.org	South Dakota Parent Connection		

STAFF

Casey Judd, **Conference Direct**
Mandy Jay, **Meeting Coordinator, NCHAM**
Kylie Downs, **Utah State University Event Services**

SPECIAL THANKS

We would also like to thank the Abstract Review Committee Members for lending time and expertise, Room Moderators for helping the meeting run smoothly, and all of the contractors whose behind the scenes magic allows us to enjoy and get the most out of the Meeting.

CONFERENCE MANAGEMENT SERVICES PROVIDED BY

Casey Judd- Conference Direct
421 East Eagle Way | Preston, Idaho 83263
435-213-9454 | www.conferencedirect.com
Utah State University Event Services
5005 Old Main Hill | Logan, Utah 84322-5005
435-797-0035 | www.conference.usu.edu

Welcome to Chicago, Illinois and the 2019 National EHDI Meeting!

In its 18th year, the EHDI Meeting has built a strong reputation for bringing together a wide variety of attendees including those who: work in state Early Hearing Detection and Intervention programs; assist in EHDI efforts on the federal level; provide screening, diagnostic and early intervention support at the state/ local level to young children with hearing loss and their families; champion Medical Home activities within each state; are parents of children with hearing loss; or are deaf or hard-of-hearing adults who are helping to expand opportunities for young children with hearing loss. EHDI Meeting participants will range from state and local programs to the federal level and from academics to families.

GOAL OF THE EHDI ANNUAL MEETING

The goal of this meeting is to enhance the implementation of comprehensive state-based Early Hearing Detection and Intervention (EHDI) programs.

LEARNING OBJECTIVES FOR PARTICIPANTS

- Identify and promote knowledge and awareness of successful strategies for implementing comprehensive state-based EHDI programs that include screening, audiologic diagnostic evaluation, early intervention, medical home, reporting, tracking, surveillance, loss to follow-up issues, data integration, and other related surveillance components.
- Interpret and describe current research and research methods related to EHDI.
- Examine cultural competence of providers and assess their ability to work with children who are deaf or hard of hearing, their families, and communities.
- Discuss the importance of enhancing and creating new and ongoing working relationships among federal agencies, non-profit organizations, state health departments and educational agencies, advocacy groups, families, and professionals.

PRINCIPLES OF PARTICIPATION

The right to participate in the EHDI Annual Meeting is fundamental to ensuring open dialogue between all EHDI stakeholders. The Meeting Organizers encourage respectful dialogue as a key element of participation among all meeting participants. The EHDI Annual Meeting opposes the disruption of any meeting sessions or events that results in the inability for dialogue to take place. The EHDI Annual Meeting reserves the right to withdraw the name badge, and therefore deny access, to participants who do not adhere to these Principles of Participation.

ACCESSIBILITY GUIDELINES FOR EHDI MEETING PARTICIPANTS AND SESSION PRESENTERS

The EHDI Meeting Planning Committee developed guidelines and checklists to maximize access for all participants in the EHDI Annual Meeting. The full guidelines are available on the EHDI Meeting website:

<https://ehdimeeting.org/includes/2019/AccessibilityGuidelines2019.pdf>

Thank you all for helping make the valuable information and dialogue at the EHDI Meeting accessible to all participants.

ACCESSIBILITY SERVICES

If you noted through the EHDI Meeting registration process or made arrangements with the EHDI Meeting organizers in advance for services, please check in with staff at the EHDI Meeting registration desk when you arrive at the EHDI Meeting to confirm arrangements. Please see the EHDI Meeting staff if you encounter any problems during the EHDI Meeting or need further assistance.

If you have not arranged for services in advance, the EHDI meeting staff and organizers will do their best to accommodate requests onsite.

All continuing education forms, including instructions and requirements for CEU submissions, can be found at the EHDI Annual Meeting Registration Desk.

ALL Continuing Education forms MUST be submitted no later than March 30, 2019 or participants will be responsible for submitting to CEU organizations on their own. Submit forms at the registration desk OR by email to mandy.jay@usu.edu no later than March 30, 2019.



AG Bell Academy for Listening and Spoken Language

At the time this book was printed, the overall Meeting was pending approval for CE credits for Instructional Sessions and for the Meeting plenary and breakout sessions by the AG Bell Academy for Listening and Spoken Language. A list of approved sessions will be available at the Meeting.

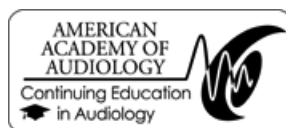
Information regarding Instructional Sessions and Meeting Sessions that have been approved for CE credits by the AG Bell Academy for Listening and Spoken Language is available at the EHDI Meeting registration desk. You will find instructions and required paperwork at the registration desk as well. Completed forms should be submitted to the registration desk prior to leaving the Meeting.

Illinois Early Intervention Training Program

At the time this book was printed, approval was pending to offer continuing education credit from the Illinois Early Intervention Training program for the 2019 EHDI Annual Meeting. If approved, sessions approved for credit will be found at <https://eitp.education.illinois.edu>. It is the responsibility of the individual to provide proof of attendance or completion of this activity to provider connections.

National Commission for Health Education Credentialing, Inc. (NCHEC)

At the time this book was printed, approval was pending for NCHAM to be a designated provider and to offer CE credit from the National Commission for Health Education Credentialing, Inc. If approved, this program will be designated to offer Certified Health Education Specialists (CHES) and the list of approved sessions and required paperwork will be available at the EHDI Annual Meeting Registration Desk. Completed forms should be submitted to the registration desk prior to leaving the Meeting.



American Academy of Audiology

At the time this book was printed, approval was pending for NCHAM to offer continuing education from the American Academy of Audiology. If approved, the program will be worth a maximum of 2.6 CEUs (this includes up to 14.5 hours of Instructional Sessions.) Instructions and the required paperwork will be available at the registration desk. Completed forms should be submitted to the registration desk prior to leaving the Meeting.

Academy approval of this continuing education activity does not imply endorsement of course content, specific products, or clinical procedures.

	<p>Utah State University is approved by the Continuing Education Board of the American Speech-Language-Hearing Association (ASHA) to provide continuing education activities in speech-language pathology and audiology. See course information for number of ASHA CEUs, instructional level and content area. ASHA CE Provider approval does not imply endorsement of course content, specific products or clinical procedures.</p>
--	--

American Speech-Language-Hearing Association

If approved, this course is offered for up to 2.65 ASHA CEUs (Intermediate level, Professional area). The National Center on Hearing Assessment and Management has submitted an application to the American Speech-Language-Hearing Association to offer CEUs for the 2019 EHDI Annual Meeting. The program may be worth a maximum of 2.65 CEUs, if approved. Instructions and the required paperwork (ASHA participant form and instructions) are available at the registration desk. Completed forms should be submitted to the registration desk prior to leaving the Meeting.

Approval of this continuing education activity does not imply endorsement of course content, specific products, or clinical procedures.

DINING

AT THE HOTEL

O'H American Grill

Indulge in our expansive breakfast buffet with healthy, fresh dishes or enjoy seasonal lunch and dinner dishes sourced from Chicago-area produce and meat purveyors. We are dietary restriction-friendly and can custom any order to meet your needs.

Hours—

Breakfast: 6:00–10:45 a.m.

Lunch: 11:00 a.m.–2:00 p.m.

Dinner: 5:00–10:00 p.m.

Red Bar & Lounge

Your favorite comfort foods and seasonal favorites are on the menu at this modern lounge featuring pub fare, appetizers, and Chicago-style pizza. Complement your savory meal with creative cocktails, signature martinis, or local craft brews including the Red Bar Brew, a deep amber ale with a toasty and sweet caramel start.

Hours—

4:00 p.m.–2:00 a.m., daily

Perks

Perks is a 24-hour market, featuring Starbucks coffee, along with fresh, healthy items to grab while on-the-go. Forget something? Perks also has Chicago-inspired souvenirs and sundries.

Dine in the comfort of your room with Perks Express. Get the same great Chef-made creations as Perks, delivered right to your guestroom or ready for pick up. Items are served in easily transportable and eco-friendly packaging.

Hours—

Pickup available 24 hours a day.

Delivery available from 6:00 a.m. to 2:00 p.m. and

5:00 p.m. to midnight

NEAR THE HOTEL

There are several restaurants within walking distance of the hotel, including the new Parkway Bank Entertainment District.

THINGS TO DO

Located a short drive from both O'Hare Airport and downtown Chicago, Hyatt Regency O'Hare near MB Financial Park offers easy access to some of the top attractions in the Chicago area.

AREA ACTIVITIES

Parkway Bank Entertainment District

Enjoy the exciting nightlife, innovative restaurants and entertainment at this new complex, just a short stroll away from the hotel.

Shows at the Rosemont Theatre

Catch a concert at Rosemont Theatre, one of Chicago's best & intimate concert venues.

Fashion Outlets of Chicago

Experience over 120 stores and 530,000 square feet of indoor space to really shop until you drop!

- Woodfield Shopping Center
- Chicago Monuments
- MB Financial Park at Rosemont
- Parks / Recreation
- Rivers Casino
- Sports In Chicago
- Fashion Outlets of Chicago
- Allstate Arena
- Rosemont Theatre
- iFLY Chicago
- Joe's Live Rosemont & Bub City

Oticon Opn™ works where children learn and play



Learn more about Oticon Opn and Oticon ConnectClip at www.oticon.com/opn



Not all learning takes place in the classroom – language learning opportunities are all around. Young children naturally learn a tremendous amount from overhearing or incidental listening, but children with hearing loss have fewer opportunities to learn by overhearing, especially when they are not looking directly at the talker.

Oticon Opn plus ConnectClip are the perfect combination for enhancing incidental listening and communication between parents and children with hearing loss, especially when there is distance or noise present, such as when riding in the car, at the playground, or in a stroller.

ConnectClip makes it easy for children to **stay connected to the most important speakers in their lives** – parents, friends, teachers, and coaches.

Open their world to the possibilities.



oticon
PEDIATRICS

Antonia Brancia Maxon Award for EHDl Excellence

The **Antonia Brancia Maxon Award for EHDl Excellence** honors the career achievements of Dr. Antonia Brancia Maxon in promoting effective EHDl programs for all newborns, infants, and young children. Dr. Maxon was a visionary in EHDl programs, beginning with her leadership in the Rhode Island Hearing Assessment Project in the late 1980's. She was one of the first to recognize the feasibility and value of universal newborn hearing screening and was a tireless advocate for connecting screening programs with timely and appropriate diagnosis and early intervention.

Her extensive contributions to creating excellent EHDl programs were abruptly ended by a tragic automobile accident in May of 2007. In memory of her contributions, an **Award for EHDl Excellence** is presented at the EHDl Annual Meeting to honor an individual or group of people who have made a noteworthy accomplishment that contributed to achieving excellence in EHDl programs nationally or in a particular state or region of the country.

Presentation of the 2019 Award

Grand Ballroom ABCD

Monday, March 4

5:30 PM

Antonia Brancia Maxon Award for EHDl Excellence

Past Recipients of the Antonia Brancia Maxon Award for EHDl Excellence

2018 Recipient: Robert Cicco
 2017 Recipient: Linda Hazard
 2016 Recipients: Irene Forsman and Susan Lenihan
 2015 Recipient: Elizabeth Seeliger
 2014 Recipient: Christine "Christie" Yoshinaga-Itano
 2013 Recipient: Janet Farrell
 2012 Recipient: Betty R. Vohr
 2011 Recipient: Jean L. Johnson
 2010 Recipients: Beth Benedict and Al Mehl
 2009 Recipients: Leeanne Seaver and Janet DesGeorges
 2008 Recipients: Judith Gravel and Mary Hartnett

Nominees for the 2019 Antonia Brancia Maxon Award for EHDl Excellence

Brenda Balch
 Tina Gonzales Childress
 John Eichwald
 Sheri Farinha and Julie Rems-Smario
 John Ted Holloway
 Karen Hopkins
 Lisa Kovacs
 Lori Ruth
 Wendell Todd

**Thank you to all who submitted
nominations for this year's award.**

More information about the accomplishments of each of the recipients of the Antonia Brancia Maxon Award for EHDl Excellence can be found at <https://ehdiconference.org/Award.cfm>

EHDI Family Leadership Award

2019 is the third year for the EHDI Family Leadership Award. During the last several decades it has become increasingly clear that EHDI only exists to improve the well-being of babies and families. Symbiotically, engaged families are central to the success of EHDI programs and more specifically to the success of children who are deaf or hard of hearing.

This award honors a parent or family member of a child who is deaf or hard of hearing for providing exemplary leadership in their state EHDI system and whose leadership has led to improved outcomes. The recipient was selected by NCHAM's Family Advisory Committee.

Presentation of the 2019 Award

**Grand Ballroom ABCD
Monday, March 4
9:00 AM**

Past Recipients

2018—Melissa Tumblin
2017—Lisa Adams and Janel Frost

Nominees for the 2019 Family Leadership Award for EHDI Excellence

Valerie Abbott
Lesla Coleman
Cheri Dowling
Darlene Freeman
Shelli Janning
Sara Kennedy
Nikki Kepo'o
Djenne-Amal Morris
Andrea Samuel
Johanna Wonderly

**Thank you to all who submitted nominations
for this year's award.**

More information about the accomplishments of each of the recipients of the Family Leadership Award for EHDI Excellence can be found at <http://ehdiconference.org/Award.cfm>

NEW!

Visit the CID – Central Institute for the Deaf booth to ask about the

EARLY LISTENING AT HOME curriculum

The CID *Early Listening at Home* (ELH) curriculum is a new tool for early intervention providers to use as they work with parents and other caregivers to build a child's listening and spoken language skills.

Convenient and easy-to-use, the ELH curriculum includes:

- tips for using a coaching approach
- CID rating form to assess 47 listening skills
- 47 corresponding activity pages to share with families
- targeted, single-page supporting resources — including many in Spanish
- a new tool to help you promote hearing device use during all waking hours



Stop by the CID booth during the **EHDI Meeting** to receive more information and enter a raffle for a chance to win a **FREE** copy!

C I D  C E N T R A L I N S T I T U T E F O R T H E D E A F



www.cid.edu

From Burnout to Esprit de Corps:

Taking Care of Each Other for the Care of the Families We Serve

Professional Burnout is an epidemic in health professionals. It negatively impacts both caregivers and patients. Dr. Swensen will present an evidence-based and validated strategy to move from Burnout to Esprit de Corps. Esprit de Corps (“the spirit of the body”) is camaraderie, passion, fulfillment, psychological safety and engagement interwoven with loyalty to the mission. It connects people to purpose and creates joy in work. Esprit de Corps is the single most impactful leading indicator (within our control) of patient experience, outcomes, costs and safety. It is a fundamental driver of organizational effectiveness.

Dr. Swensen will offer participants the inspiration, motivation and blueprint to create and nurture a culture of Esprit de Corps.



Stephen J. Swensen, MD, MMM

*Professor Emeritus, Mayo Clinic College of Medicine
Senior Fellow, Institute for Healthcare Improvement*

Dr. Swensen is dedicated to the support of thoughtful leaders and teams that have the capability to nurture esprit de corps. He is a recognized, well-published expert in leadership and professional burnout. Dr. Swenson served as the Director for Leadership and Organization Development at the Mayo Clinic for three decades. As Director for Quality, he established the Quality Academy and the Value Creation System. More than 37,000 colleagues were certified as Quality Fellows during his tenure. A full professor, he has been Principal Investigator of two NIH Grants and has authored two books and 186 peer-reviewed articles. He was honored with the Diamond Quality Fellow Lifetime Achievement Award and served as President of two international professional groups. He founded the Big Sky Group and the Sun Valley Roundtable. Swensen has been married for 41 years, has two children, and has run or cross-country skied 39 marathons.



Professionals and Spanish speaking families are invited to *Experience the Possibilities*

SPONSORED BY ADVANCED BIONICS AND PHONAK
in partnership with local AG Bell Chapters

Advanced Bionics and Phonak, the broadest hearing care providers, have partnered to help Spanish speaking children on their developmental hearing journeys. We are proud to present our innovative range of hearing solutions for a child's journey from cradle to career.

JOIN US

April 6, 2019 in San Antonio, TX
April 13, 2019 in Atlanta, GA
May 11, 2019 in Phoenix, AZ

Meet parents, educators and hearing health care providers in the Spanish speaking deaf and hard of hearing community. To learn more please email escucha@advancedbionics.com.

 **PHONAK**

D000023941 ©2019 Advanced Bionics AG and its affiliates. All rights reserved.

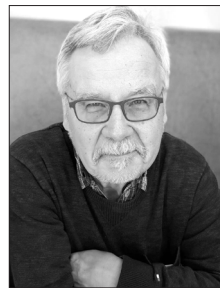


The Role of Fathers of Deaf and Hard-of-Hearing Toddlers in Educational Practice

Although family-centered intervention has become the standard in supporting toddlers who are deaf or hard of hearing (DHH) and their families, reality in educational practice reveals that the whole family is not always included in early intervention. In particular, fathers are mostly left out of picture, and therefore most of the research data we have are data from mothers. This is not bad, but perhaps it will not be enough!

This is surprising because we have quite a bit of research about families of children without disabilities. The available data reveal the specific role that fathers (can) play for child development: Fathers influence their children in many domains ranging from positive psychological adjustment and lower distress during adolescence, fewer behavioral problems during the preschool, elementary and high school years, improved language and cognitive development during the early childhood years, and more positive peer relationships during early childhood. There is also emerging evidence that fathers' involvement can have similar positive impact on family and child outcomes for children with disabilities.

The presentation will offer a concise summary of the published research about the role of fathers for child development in general and about the role of fathers with children who have disabilities and fathers who have a child who is DHH. The data presented will demonstrate that involvement of fathers with infants and toddlers who are DHH in early intervention may be a challenge for some reasons. But, the data also show that involvement of fathers is important for the development of infants and toddlers who are DHH and the well-being of the families.



Manfred Hintermair

Former Professor of Psychology at the University of Education in Heidelberg, Germany

Manfred Hintermair, Ph.D., was a Professor of Psychology at the Department for Special Education at the University of Education in Heidelberg, Germany from 1994 to 2016. His primary interest in research is family socialisation and deafness, and socio-emotional development of deaf and hard of hearing children. He

has published numerous books and papers, and has held many presentations on deaf education and development. He has been retired since 2016, but is still involved in several research projects.

Unilateral Hearing Loss in Children: Outcomes and Current Options

For decades, audiologists, speech-language pathologists, teachers, early interventionists, and parents have puzzled over the impact of unilateral hearing loss on children. After all, one might assume that one normal hearing ear ought to be sufficient for hearing speech and sounds in the environment. Nonetheless, a growing body of evidence suggests that, on average, children with unilateral hearing loss have more academic, speech and language, and social-behavioral difficulties than their normal hearing peers.

This presentation will review what we know and what we do not yet know about children with unilateral hearing loss. Specifically, several theories for why these children experience difficulties will be explored and current best practices for management will be addressed. Management is considered in terms of interdisciplinary partnerships that include the child's parents or caregivers. Tools intended to enhance such partnerships will be described and research designed to inform our future management directions with these children will be discussed.



Anne Marie Tharpe

Professor & Chair, Vanderbilt University School of Medicine

Dr. Anne Marie Tharpe is Professor and Chair, Department of Hearing and Speech Sciences, Vanderbilt University School of Medicine in Nashville Tennessee. The primary research emphasis in her laboratory has been in furthering our understanding of the developmental impact of hearing loss on young children. This work has been done by examining questions of behavioral indices of attention, environmental exploration, and academic outcomes. More recently, work has focused on the impact of hearing technology interventions on caregiver and child behavior and the sleep patterns in those with hearing loss. Dr. Tharpe has published extensively in national and international professional journals, has published numerous books and book chapters, and has presented to over 300 audiences around the world on pediatric audiology issues. She is co-editor with Dr. Richard Seewald of *The Comprehensive Handbook of Pediatric Audiology*, 2nd edition, which was published in 2016.

and international professional journals, has published numerous books and book chapters, and has presented to over 300 audiences around the world on pediatric audiology issues. She is co-editor with Dr. Richard Seewald of *The Comprehensive Handbook of Pediatric Audiology*, 2nd edition, which was published in 2016.



Congenital cytomegalovirus, or CMV, is the leading, non-genetic cause of hearing loss in children.

CMV is common, serious, and preventable.

Learn more and donate today.

Booth 25, Exhibit Hall

www.NationalCMV.org



ReSound at EHDI March 3-5

Made for
iPhone | iPad | iPod



ReSound GN

Join us at EHDI March 3-5 in Chicago, IL

At ReSound, we know the importance of what children learn in their early years, and that all starts with how well they can listen. ReSound's dedication to pediatric hearing advancement is evident in our products. With the Resound Multi Mic children can hear crystal clear sound up to 80 feet away in clear line of sight.

The ReSound Multi Mic connects with loop and educational Assistive Listening Device (ALD) systems like those found in many schools, doubles as a table microphone and has a mini jack input so you can stream sound directly to Resound pediatric hearing aids from any device with a headphone output. Come see us at booth #29 at EHDI to discuss our innovative connectivity options and benefits for children.

Register online and learn more at <https://ehdimeeting.org/>

GN Making Life Sound Better

© 2018 GN ReSound A/S. All rights reserved. Apple, the Apple logo, iPhone, iPad and iPod are registered trademarks of Apple Inc.
* Patients must be 18 years or younger. Some exclusions may apply.



FREE ReSound Multi Mic
with your purchase of a
ReSound pediatric hearing aid*



Bio-logic
– the next generation

A new, all-in-one AEP solution

Next generation Bio-logic live demo at the Natus/Otometrics booth

**EHDI 2019 Special:
ABR replacement offer***

Purchase the next generation Bio-logic NavPRO ONE ABR solution and save up to \$6000!

Visit the Natus/Otometrics booth to learn more.

Legendary reliability in a handheld device

Bio-logic® NavPRO ONE® is a flexible and compact Auditory Evoked Potential Response (AEP) system providing results you can trust. This one-channel AEP device is powerful – with similar capabilities to larger PC-based, desktop devices. PC-independent, handheld and transportable, it allows you to take your equipment to the patient – or to remote locations.

Customize tests to meet your needs with these modular combinations:

- Screening ABR
- Diagnostic ABR
- Electrical ABR
- ASSR
- Screening Audiometry
- Diagnostic Audiometry
- Screening OAE
- Diagnostic OAE
- Input-Output OAE
- Threshold Estimation OAE

The Bio-logic legacy lives on

The new Bio-logic NavPRO ONE is the next generation AEP solution from Otometrics. It is a reliable and accurate diagnostic platform – with a portable, adaptable design to satisfy current and future needs. Contact your local Otometrics representative to learn more.

*EHDI 2019 Special ends March 31, 2019.

*Cannot be combined with other offers or discounts.

BIO1902-EHDI

855.283.7978
otometrics.us

 **otometrics**
a division of natus

EXHIBITS

EXHIBIT HALL – Grand Ballroom EFGH

The 2019 EHDI Meeting Planning Committee would like to express their appreciation to all of the following exhibitors for supporting the EHDI Meeting. Exhibits will be open:

Sunday, March 3
6:00 PM–8:00 PM

Monday, March 4
7:15 AM–5:30 PM

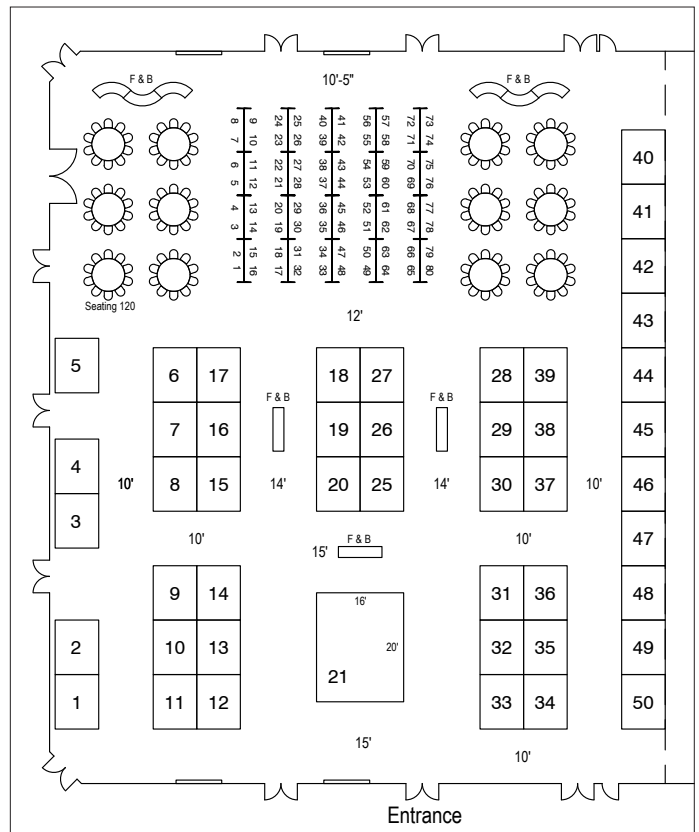
Tuesday, March 5
7:15 AM–11:00 AM

EXHIBITOR BOOTHS

1	Illinois School for the Deaf
2	Caption Call
3	Illinois Association of the Deaf
4	The Holley Institute
5	Early Intervention Research Group (EIRG)– Northwestern University
6	Chatterbox Books
7	Laurent Clerc National Deaf Education Center
8	Phonak
9	Ear Community
10/11	National Cued Speech Association (2 booths)
12	The CARE Project
13	Intelligent Hearing Systems
14	American Society for Deaf Children
15	Advanced Bionics*
16/17	MAICO Diagnostics (2 booths)
18	FamilyTrac
19	BEGINNINGS for Parents of Children Who are Deaf or Heard of Hearing
20	Pediatric Medical Group an Affiliate of MEDNAX®*
21	MED-EL Corporation*
25	National CMV Foundation*
26	Child's Voice
27	Alexander Graham Bell Association for the Deaf and Hard of Hearing (AG Bell)
28	OZ Systems
29	ReSound*
30	Cochlear Americas*
31	Oticon Pediatrics*
32	Otometrics/Natus Medical Incorporated*
33	Vivosonic Inc.*
34	Grason-Stadler
35/36	Hands & Voices (2 booths)
37	Chicago Hearing Society

38	2 Ears 2 Learn
39	SignOn
42	Hearing Loss Association of America
43	Otodynamics LTD
44	National Center for Hearing Assessment & Management (NCHAM)
45	Co-amplify
46	Oticon Medical
47	CID-Central Institute for the Deaf
48	ASHA
49	Natus Medical Incorporated
50	Described and Captioned Media Program

*2019 Sponsor



EXHIBITORS

2 Ears 2 Learn

Booth 38
100 E Idaho Street Suite 318
Boise, ID 83712
208-949-6975
info@2ears2learn.org
www.2ears2learn.org

Advanced Bionics

Booth 15
28515 Westinghouse Pl.
Valencia, CA 91355
866-844-4327
hear@advancedbionics.com
www.advancedbionics.com

Alexander Graham Bell Association for the Deaf and Hard of Hearing (AG Bell)

Booth 27
3417 Volta Place, NW
Washington, DC 20007
202-337-5220
info@agbell.org
www.agbell.org

American Society for Deaf Children

Booth 14
PO Box 23
Woodbine, MD 21797
800-942-2732
info@deafchildren.org
www.deafchildren.org

American Speech-Language-Hearing Association (ASHA)

Booth 48
2200 Research Boulevard
Rockville, MD 20850
301-296-5790
tashby@asha.org
www.asha.org

BEGINNINGS for Parents of Children Who are Deaf or Hard of Hearing

Booth 19
156-A Wind Chime Court Suite A
Raleigh, NC 27615
919-715-4092
DDoak@ncbegin.org
www.ncbegin.org

CaptionCall

Booth 2
4215 S Riverboat Rd.
Salt Lake City, UT 84123
574-340-1842 or 877-557-2227
tholewczynski@captioncall.com
www.captioncall.com

CID-Central Institute for the Deaf

Booth 47
825 South Taylor Ave.
Saint Louis, MO 63110s
314-977-0132
cid@cid.edu
www.cid.edu

Chatterbox Books

Booth 6
34410 CR 39
Pequot Lakes, MN 56472
218-838-5352
teri@thebigbookofexclamations.com
chatterboxbooks.com

Chicago Hearing Society

Booth 37
1444 W Willow Street
Chicago, IL 60642
773-248-9121
KAguilar@anixter.org
www.ChicagoHearingSociety.org

Child's Voice

Booth 26
180 Hansen Ct.
Wood Dale, IL 60191
630-595-8200
info@childsvoice.org
http://childsvoice.org/

Co-Amplify

Booth 45
310 Summit Street
Portland, ME 04103
207-400-0783
meghan@coamplify.com
www.coamplify.com

Cochlear Americas

Booth 30
13059 East Peakview Avenue
Centennial, CO 80111
800-523-5798
CamClinicService@cochlear.com
cochlear.com/us

Described and Captioned Media Program

Booth 50
National Association of the Deaf
1447 E. Main Street
Spartanburg, SC 29307
864-541-0009
ccamp@dcmp.org
https://dcmp.org/

Ear Community

Booth 9
280 E 1st Avenue, Unit 704
Broomfield, CO 80038
303-646-7126
earcommunity@gmail.com
www.EarCommunity.org

Early Intervention Research Group (EIRG)—Northwestern University

Booth 5
2240 Campus Drive, 3-321
Evanston, IL 60201
847-491-2430
ei@northwestern.edu
https://ei.northwestern.edu/

FamilyTrac

Booth 18
12713 Waterman Drive
Raleigh, NC 27614
919-412-1923
chuck.scheier@familytrac.com
familytrac.com

Grason-Stadler

Booth 34
10395 W 70th Street
Eden Prairie, MN 55344
800-700-2282
info@grason-stadler.com
grason-stadler.com

Hands & Voices

Booth 35 & 36
PO Box 3093
Boulder, CO 80307
303-492-6283
jeannene@handsandvoices.org
Sara@handsandvoices.org
handsandvoices.org

Hearing Loss Association of America

Booth 42
7910 Woodmont Ave Suite 1200
Bethesda, MD 20814
301-657-2248
radler@hearingloss.org
www.hearingloss.org

Illinois Association of the Deaf

Booth 3
PO Box 2161
Palatine, IL 60078
224-232-8798
eb@iadeaf.org
https://iadeaf.org/

Illinois School for the Deaf Outreach

Booth 1
125 S Webster Ave
Jacksonville, IL 62650
desa.johnson@illinois.gov
http://www.illinoisdeaf.org/
outreach/outreach.html

Intelligent Hearing Systems

Booth 13
6860 SW 81 Street
Miami, FL 33143
800-447-9783 or 305-668-6102
sales@ihsys.com
www.ihsys.com

Laurent Clerc Deaf Education Center

Booth 7
800 Florida Avenue NE KDES 3400
Washington DC, DC 20002
202-651-5855
Leslie.page@gallaudet.edu
http://clerccenter.gallaudet.edu

MAICO Diagnostics

Booths 16 & 17
10393 West 70th St.
Eden Prairie, MN 55344
952-278-4412
info@maico-diagnostics.com
http://www.maico-diagnostics.com/us/

MED-EL Corporation

Booth 21
2645 Meridian Parkway Suite 100
Durham, NC 27713
984-364-0756
implants.us@medel.com
https://www.medel.com/us/

National CMV Foundation, Inc.

Booth 25
PO Box 18322
Tampa, FL 33679
813-207-0017
advocacy@nationalcmv.org
www.nationalcmv.org



We're all ears (and brainstem response too)

Providing newborn hearing screens using Automated Auditory Brainstem Response Screening technology since 1999

It takes a team! As a hearing screen provider and advocate, we are always listening and appreciate your feedback. We are proud of the relationships we have built and the collaboration with parents, primary care providers, state EHDI programs, audiologists, ENTs, early intervention teams and other stakeholders. For over 20 years we have provided high quality screening services understanding that the screen is only the beginning. But we don't rest on our laurels. We are committed to continuous improvement of screen practices to ensure all infants with congenital hearing loss are identified at birth and provided collaborative and coordinated follow-up for timely intervention.

 **Visit us at booth #20**



NEWBORN HEARING SCREENS

PEDIATRIX

an affiliate of **MEDNAX**

National Cued Speech Association
Booths 10 & 11
1300 Pennsylvania Ave
NW Suite 190-713
Washington, DC 20004
800-459-3529
info@cuedspeech.org
www.cuedspeech.org

Natus Medical Incorporated
Booth 49
1501 Industrial Road
San Carlos, CA 94070
1-650-802-0400 or
1-800-303-0306
NatusMarCom@natus.com
www.natus.com

**NCHAM—National Center
for Hearing Assessment
& Management**
Booth 44
Utah State University
2615 Old Main Hill
Logan, UT 84322-2615
435-797-3013
karl.white@usu.edu
www.infantheating.org

Otodynamics LTD
Booth 43
5011 E Barwick Drive
Cave Creek, AZ 85331
1-800-659-7776
lee@otodynamics.com
https://www.otodynamics.info/

**Otometrics/Natus Medical
Incorporated**
Booth 32
50 Commerce Drive, Suite 180
Schaumburg, IL 60173
855-283-7978
OtoOrder.US@Natus.com
www.Otometrics.US

Oticon Medical
Booth 46
580 Howard Avenue
Somerset, NJ 08873
888-277-8014
info@oticonmedicalusa.com
www.oticonmedical.com/US

Oticon Pediatrics
Booth 31
580 Howard Ave
Somerset, NJ 08873
888-684-7331
pediatrics@oticonusa.com
www.oticon.com

OZ Systems
Booth 28
2201 East Lamar Blvd Suite 260
Arlington, TX 76006
888-727-3366
wwelsh@ozsystems.com
www.ozsystems.com

**Pediatric Medical Group an
Affiliate of MEDNAX®**
Booth 20
1500 Concord Ter
Sunrise, FL 33323
800-243-3839 x5433
jillian_gerstenberger@mednax.com
https://www.mednax.com/

Phonak
Booth 8
4520 Weaver Parkway
Warrenville, IL 60555
1-800-777-7333
www.phonak-us.com

ReSound
Booth 29
8001 E Bloomington Freeway
Bloomington, MN 55420
612-400-2843
rdixon@gnresound.com
www.resound.com

SignOn
Booth 39
296 Lothrop
Grosse Pointe Farms, MI 48236
313-539-3246
ashlee@signonconnect.com
www.signonconnect.com

The Care Project
Booth 12
716 Staley Court
Raleigh, NC 27609
910-233-0994
johnnie@thecareproject.com
www.thecareproject.com

The Holley Institute
Booth 4
Boll Prof Bldg 1, Suite 223
22151 Moross Road
Detroit, MI 48236-2172
313-449-8158
Alexa.Craig@ascension.org
www.holleyfv.org

Vivosonic Inc.
Booth 33
222-5535 Eglinton Ave. W.
Toronto, ON M9C 5K5
Toll Free (USA/Canada):
1-877-255-7685
info@vivosonic.com
www.vivosonic.com



ADHEAR

NON-SURGICAL BONE CONDUCTION SYSTEM



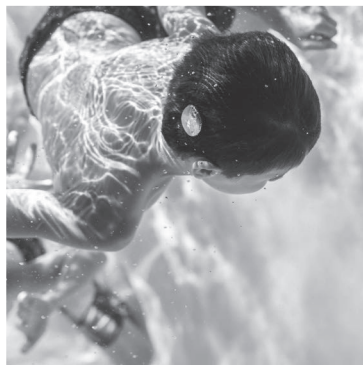
SYNCHRONY

COCHLEAR IMPLANT SYSTEM



BONEBRIDGE

IMPLANTABLE BONE CONDUCTION SYSTEM



Every parent wants the **best** for their child.

Learn more about our hearing solutions by visiting us at EHDI!

888-633-3524

MED  EL

MEDEL.COM



early intervention

RESEARCH GROUP

DOES YOUR CHILD HAVE HEARING LOSS IN BOTH EARS?

The Early Intervention Research Group is looking for families to participate in a study looking at the effects of a **language intervention** on toddlers with hearing loss and their parents.

Your Participation Includes:

- 24 months of participation, when your child is 12 to 36 months old.
- **Assessments** in your home.
- Speech and language **reports** about your child's development.
- Language **handouts** with strategies to use with your child.
- **Compensation** for your time.
- **Some** families will be randomly selected to receive additional language therapy.

Eligibility:

- Your child is **8 to 13 months old**.
- Your child has hearing loss in **both ears**.
- Your child currently:
 - a) Wears **hearing aids** -OR-
 - b) Has **cochlear implants** -OR-
 - c) Is a **candidate** for cochlear implants.
- Your child has one caregiver with normal hearing who is willing to participate.
- Your child hears mainly English at home.



*Contact us today for
more information!*

Go to:

EI.NORTHWESTERN.EDU

And click "**Participate**"

847.491.3183



Northwestern
University

THANK YOU TO OUR SPONSORS

The EHDI Annual Meeting organizers and Planning Committee would like to recognize and thank them for their sponsorship contributions to the 2019 EHDI Annual Meeting.

PLATINUM LEVEL SPONSOR

MED EL

SILVER LEVEL SPONSORS

vivosonic 

AB ADVANCED
BIONICS
POWERFUL CONNECTIONS



Cochlear[®]

Hear now. And always

ReSound GN



otometrics
a division of **natus**.

BRONZE LEVEL SPONSORS

 NEWBORN HEARING SCREENS
PEDIATRIX
an affiliate of **MEDNAX**

oticon
PEDIATRICS

NATIONAL
CMV
FOUNDATION
INFORM ♥ ENGAGE ♥ ADVOCATE

Kansas City 2020

19th Annual EHDI Meeting



March 8–10, 2020

Sheraton Kansas City
Hotel at Crown Center

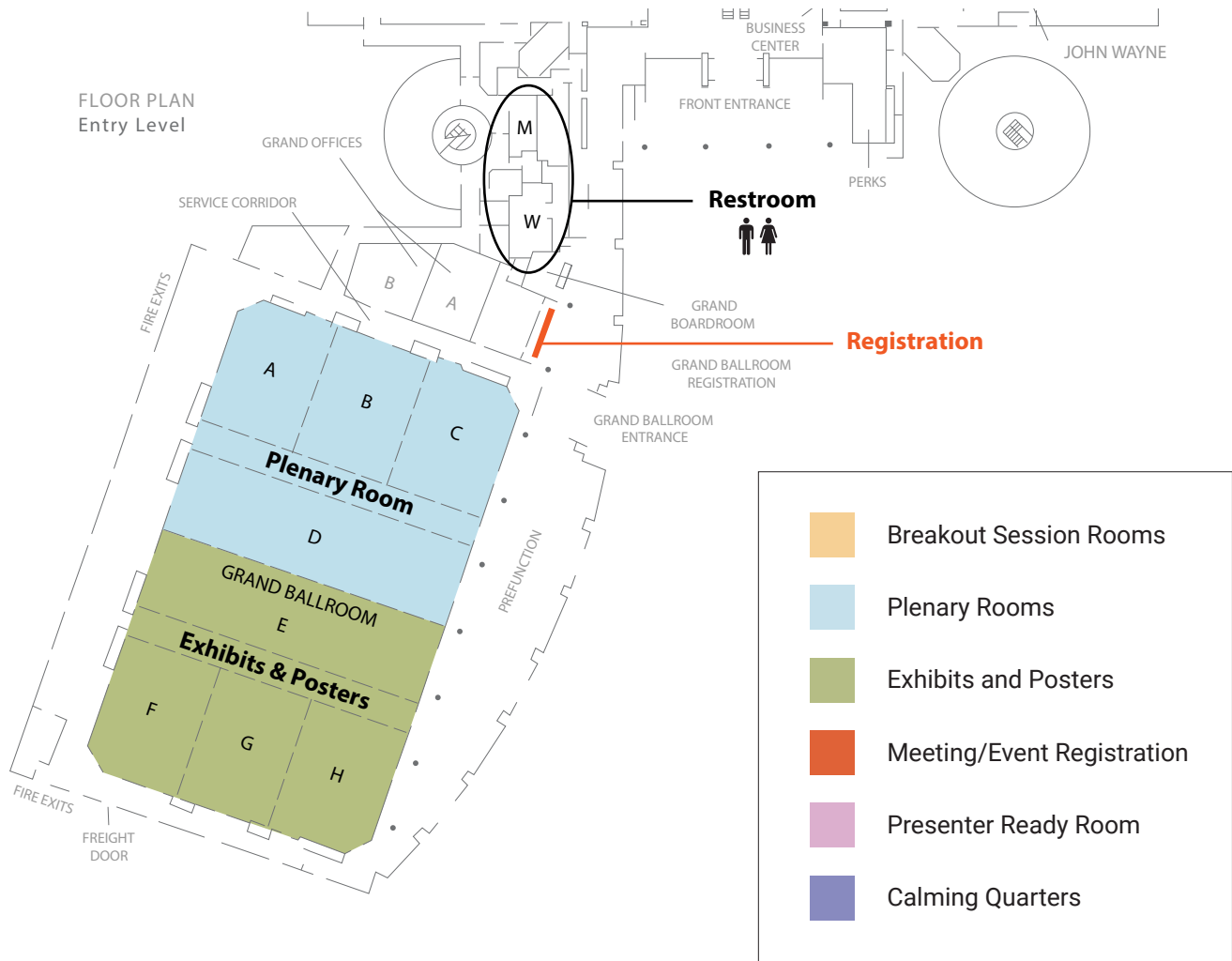
ehdimmeeting.org



© Jonathan Tasler



HYATT REGENCY O'HARE FLOOR PLAN



International Level



SCHEDULE AT-A-GLANCE

Saturday, March 2, 2019

8:30 AM - 5:00 PM	JCIH Meeting	Florence
1:00 PM - 5:00 PM	Islands/Outlying Territories Meeting	London
5:30 PM - 7:30 PM	DSHPSHWA Meeting	International D/E
7:30 PM - 9:00 PM	HRSA/MCHB Reception	Vienna

Sunday, March 3, 2019

7:15 AM - 8:00 PM	Pre-Session / Meeting Registration Open	Grand Registration A
8:00 AM - 12:00 PM	EHDI Coordinator Meeting	International B/C
	Family Based Organization (FBO) Meeting	International D/E
8:00 AM - 5:00 PM	Presenter Ready Room Open	Gatwick
9:00 AM - 4:30 PM	Instructional Sessions: 9 Total	
12:00 PM - 6:00 PM	Exhibit/Poster Set-Up	Grand Ballroom EFGH
2:00 PM - 5:00 PM	Workshop for LEND Audiology Trainees	International D/E
4:00 PM - 6:00 PM	Deaf Schools Gathering	Narita A/B
4:30 PM - 6:00 PM	EHDI 101	Grand Ballroom ABCD
5:00 PM - 6:15 PM	EHDI Student Kick-off	International B/C
6:00 PM - 8:00 PM	Reception and Exhibits Open	Grand Ballroom EFGH
7:00 PM - 9:00 PM	Children's Storytelling	Charles De Gaulle
	Parent Gathering	Grand Ballroom ABCD

Monday, March 4, 2019

6:45 AM - 8:00 AM	Continental Breakfast	Grand Ballroom EFGH
7:00 AM - 7:50 AM	Food for Thought: Student-Professional Networking Breakfast	London
	D/HH Adult Involvement in EHDI Programs: Round Table Discussion	Heathrow A/B
7:00 AM - 3:30 PM	Registration Open	Grand Registration A
7:15 AM - 5:30 PM	Exhibits Open	Grand Ballroom EFGH
	Presenter Ready Room Open	Gatwick
8:00 AM - 9:00 AM	Plenary I : Stephen J. Swensen 'From Burnout to Esprit de Corps: Taking Care of Each Other for the Care of the Families We Serve'	Grand Ballroom ABCD
9:00 AM - 9:15 AM	Presentation of EHDI Family Leadership Award	Grand Ballroom ABCD
9:15 AM - 9:25 AM	Overview of Stakeholder Meetings	Grand Ballroom ABCD
9:25 AM - 9:30 AM	Break	Grand Ballroom EFGH
9:30 AM - 11:00 AM	State Stakeholders' Meetings	Various Locations
11:00 AM - 11:15 AM	Break	Grand Ballroom EFGH
11:15 AM - 12:15 PM	Breakout Session 1	
12:15 PM - 2:00 PM	Lunch (on your own)	
12:30 PM - 1:45 PM	AAP Informal Networking	Florence
12:35 PM - 2:00 PM	Parent Place Lunch Meeting	International B/C

Monday, March 4, 2019 (Continued)

12:45 PM - 2:00 PM	Poster Session/Exhibits Open	Grand Ballroom EFGH
2:00 PM - 2:15 PM	Break	Grand Ballroom EFGH
2:15 PM - 3:15 PM	Breakout Session 2	
3:15 PM - 3:35 PM	Refreshment Break	Grand Ballroom EFGH
3:35 PM - 4:05 PM	Breakout Session 3	
4:05 PM - 4:25 PM	Break	Grand Ballroom EFGH
4:25 PM - 5:30 PM	Plenary II: Manfred Hintermair 'The Role of Fathers of Deaf and Hard of Hearing Toddlers in Educational Practice'	Grand Ballroom ABCD
5:30 PM - 5:45 PM	Presentation of the Antonia Brancia Maxon Award for EHDI Excellence	Grand Ballroom ABCD

Tuesday, March 5, 2019

6:45 AM - 8:00 AM	Continental Breakfast	Grand Ballroom EFGH
7:00 AM - 7:50 AM	Food for Thought: Student-Professional Networking Breakfast	London
7:00 AM - 12:00 PM	Registration Open	Grand Registration A
7:15 AM - 11:00 AM	Exhibits Open	Grand Ballroom EFGH
7:15 AM - 3:15 PM	Presenter Ready Room Open	Gatwick
8:00 AM - 9:00 AM	Plenary III: Anne Marie Tharpe 'Unilateral Hearing Loss in Children: Outcomes and Current Options'	Grand Ballroom ABCD
9:00 AM - 9:20 AM	Presentation of Poster and Website Awards	Grand Ballroom ABCD
9:20 AM - 9:40 AM	Refreshment Break	Grand Ballroom EFGH
9:40 AM - 10:40 AM	Breakout Session 4	
10:40 AM - 11:00 AM	Break	Grand Ballroom EFGH
11:00 AM - 12:00 PM	Breakout Session 5	
12:00 PM - 1:45 PM	Lunch (on your own)	
	Family Advisory Committee Lunch	Grand Boardroom
12:15 PM - 1:30 PM	LEND Audiology Training Debrief	Malpensa
1:45 PM - 2:45 PM	Breakout Session 6	
2:45 PM - 3:00 PM	Break	Grand Ballroom EFGH
3:00 PM - 3:30 PM	Breakout Session 7	
3:30 PM - 3:45 PM	Refreshment Break	Grand Ballroom EFGH
3:45 PM - 4:45 PM	Breakout Session 8	

Wednesday, March 6, 2019

7:30 AM - 1:30 PM	Field Trip—University of Chicago (including Thirty Million Words initiative)	Hotel Lobby
8:00 AM - 3:00 PM	Instructional Sessions: 5 total	
8:00 AM - 12:00 PM	Field Trip—Child's Voice	Hotel Lobby
8:30 AM - 11:30 AM	Field Trip—AG Bell Montessori School	Hotel Lobby